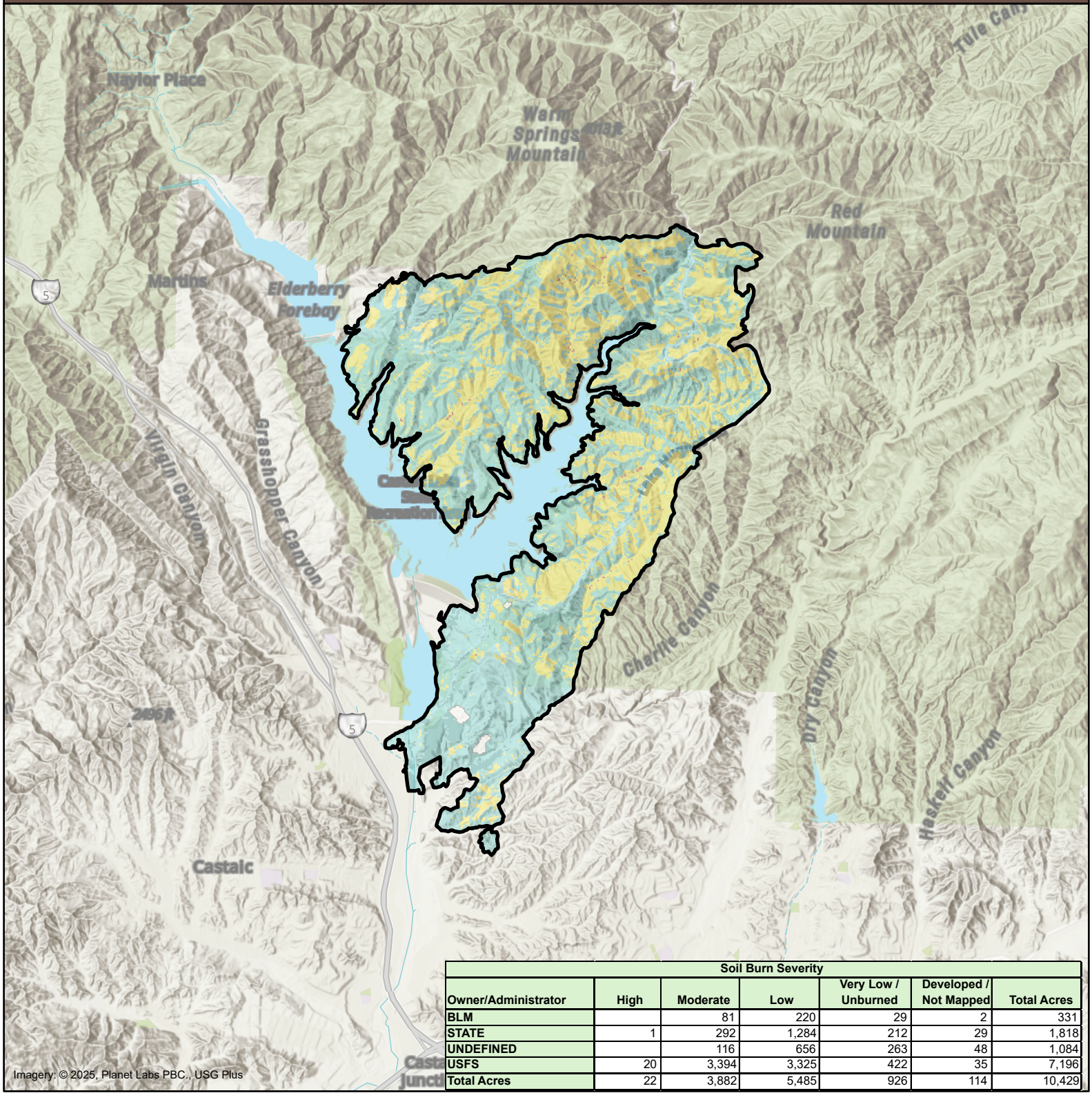




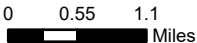
Soil Burn Severity

Hughes BAER



Soil Burn Severity						
Owner/Administrator	High	Moderate	Low	Very Low / Unburned	Developed / Not Mapped	Total Acres
BLM		81	220	29	2	331
STATE	1	292	1,284	212	29	1,818
UNDEFINED		116	656	263	48	1,084
USFS	20	3,394	3,325	422	35	7,196
Total Acres	22	3,882	5,485	926	114	10,429

Imagery: © 2025, Planet Labs PBC., USG Plus



- Fire Perimeter
- Soil Burn Severity**
- High
- Moderate
- Low
- Very Low/Unburned
- Developed/Not Mapped

Disclaimer:
This is a product of BAER rapid assessment.
Further information concerning the accuracy and appropriate uses of this data may be obtained from the USDA Forest Service. The Forest Service makes no warranty, expressed or implied, including the warranties of merchantability and fitness for a particular purpose, nor assumes any legal liability or responsibility for the accuracy, reliability, completeness or utility of these geospatial data, or for the improper or incorrect use of these geospatial data.
These geospatial data and related maps or graphics are not legal documents and are not intended to be used as such. The data and maps may not be used to determine title, ownership, legal descriptions, boundaries, legal jurisdiction, or restrictions that may be in place on either public or private land. Natural hazards may or may not be depicted on the data and maps, and land users should exercise due caution. The data is dynamic and may change over time. The user is responsible to verify the limitations of the geospatial data and to use the data accordingly.



2/2/2025
NAD 1983 UTM Zone 11N

