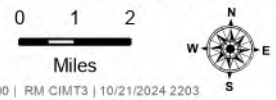


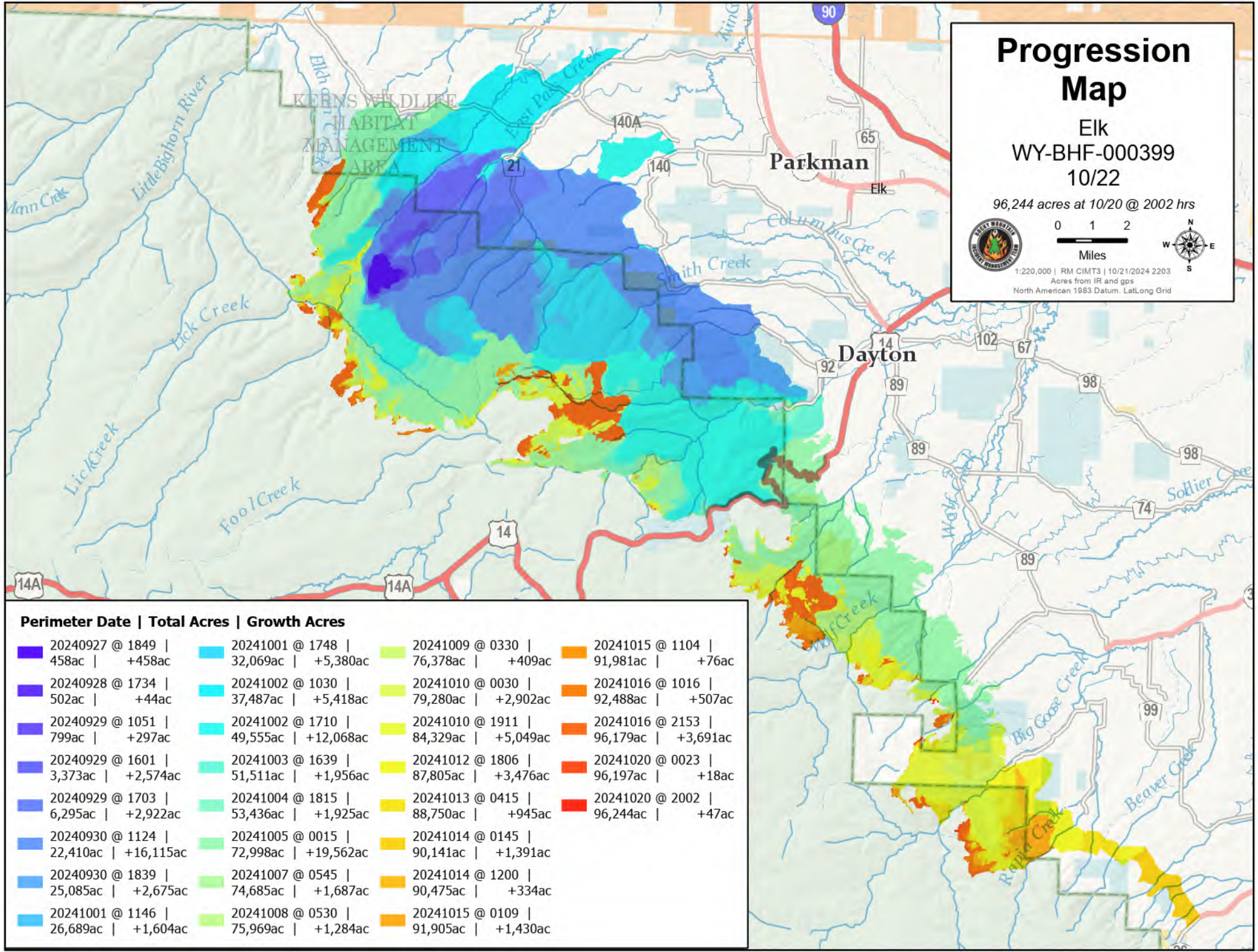
# Progression Map

Elk  
WY-BHF-000399  
10/22

96,244 acres at 10/20 @ 2002 hrs



1:220,000 | RM CIMT3 | 10/21/2024 2203  
Acres from IR and gps  
North American 1983 Datum, Lat/Long Grid



**Perimeter Date | Total Acres | Growth Acres**

20240927 @ 1849   458ac   +458ac	20241001 @ 1748   32,069ac   +5,380ac	20241009 @ 0330   76,378ac   +409ac	20241015 @ 1104   91,981ac   +76ac
20240928 @ 1734   502ac   +44ac	20241002 @ 1030   37,487ac   +5,418ac	20241010 @ 0030   79,280ac   +2,902ac	20241016 @ 1016   92,488ac   +507ac
20240929 @ 1051   799ac   +297ac	20241002 @ 1710   49,555ac   +12,068ac	20241010 @ 1911   84,329ac   +5,049ac	20241016 @ 2153   96,179ac   +3,691ac
20240929 @ 1601   3,373ac   +2,574ac	20241003 @ 1639   51,511ac   +1,956ac	20241012 @ 1806   87,805ac   +3,476ac	20241020 @ 0023   96,197ac   +18ac
20240929 @ 1703   6,295ac   +2,922ac	20241004 @ 1815   53,436ac   +1,925ac	20241013 @ 0415   88,750ac   +945ac	20241020 @ 2002   96,244ac   +47ac
20240930 @ 1124   22,410ac   +16,115ac	20241005 @ 0015   72,998ac   +19,562ac	20241014 @ 0145   90,141ac   +1,391ac	
20240930 @ 1839   25,085ac   +2,675ac	20241007 @ 0545   74,685ac   +1,687ac	20241014 @ 1200   90,475ac   +334ac	
20241001 @ 1146   26,689ac   +1,604ac	20241008 @ 0530   75,969ac   +1,284ac	20241015 @ 0109   91,905ac   +1,430ac	