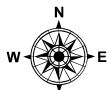
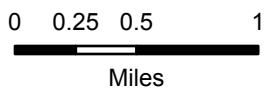


98°42'W 98°41.5'W 98°41'W 98°40.5'W 98°40'W 98°39.5'W 98°39'W 98°38.5'W 98°38'W 98°37.5'W 98°37'W 98°36.5'W 98°36'W 98°35.5'W 98°35'W 98°34.5'W 98°34'W

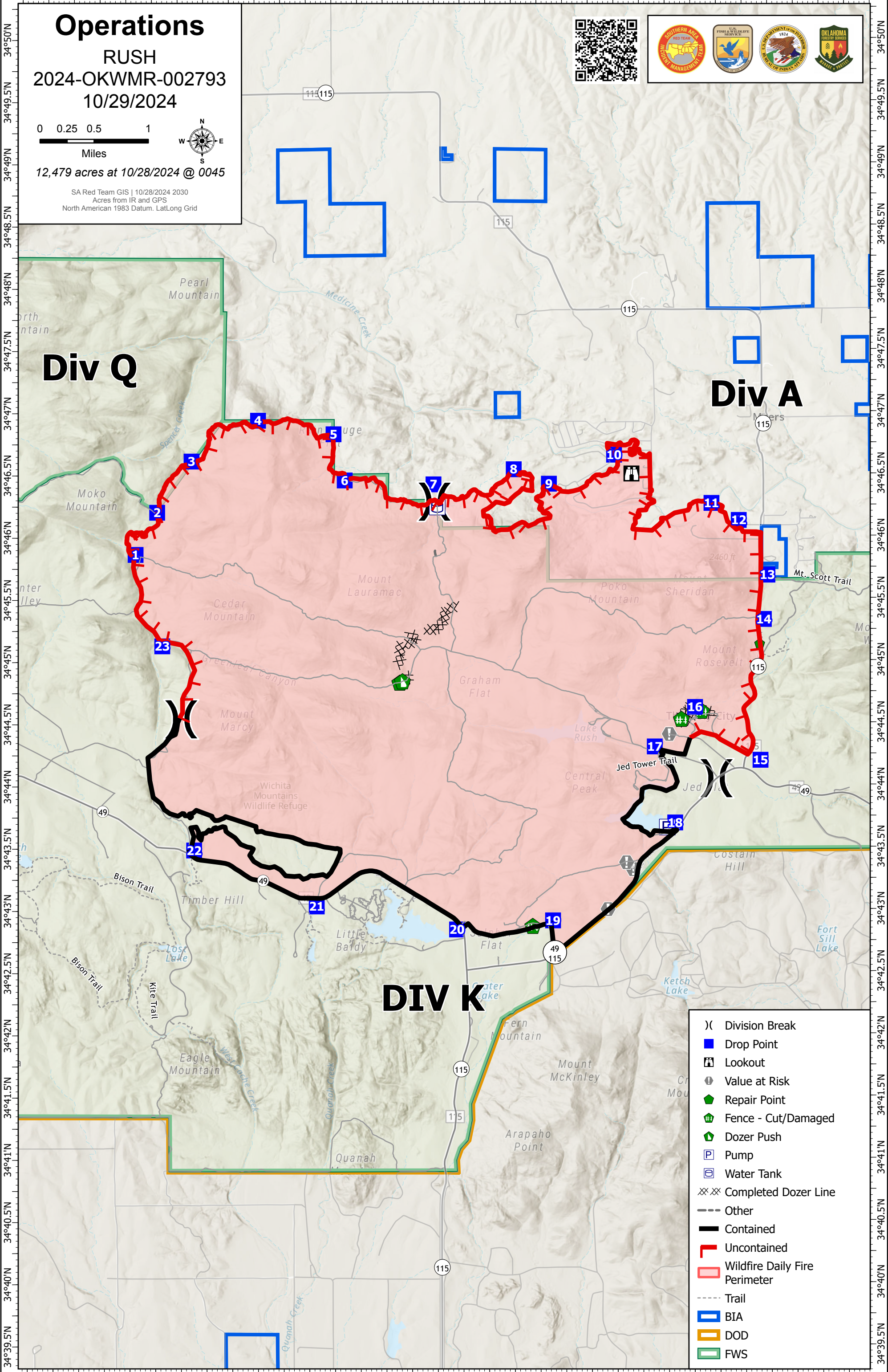
Operations

RUSH
2024-OKWMR-002793
10/29/2024



12,479 acres at 10/28/2024 @ 0045

SA Red Team GIS | 10/28/2024 2030
Acres from IR and GPS
North American 1983 Datum, LatLong Grid



Div Q

Div A

DIV K

- Division Break
- Drop Point
- Lookout
- Value at Risk
- Repair Point
- Fence - Cut/Damaged
- Dozer Push
- Pump
- Water Tank
- Completed Dozer Line
- Other
- Contained
- Uncontained
- Wildfire Daily Fire Perimeter
- Trail
- BIA
- DOD
- FWS

98°42'W 98°41.5'W 98°41'W 98°40.5'W 98°40'W 98°39.5'W 98°39'W 98°38.5'W 98°38'W 98°37.5'W 98°37'W 98°36.5'W 98°36'W 98°35.5'W 98°35'W 98°34.5'W 98°34'W