



# Soil Burn Severity Map

## Wolf Creek Burned Area Emergency Response

**Soil Burn Severity**  
 Soil Burn Severity is a measure of the fire's effects on the ground surface and soil condition. This map identifies the fire-induced changes in soil and ground surface properties that may affect infiltration, runoff, and erosion potential. The BAER Team uses this map to identify areas of unacceptable risk to a critical value and where mitigating treatments may be most effective. This product is appropriate for wildland landscapes and does not represent fire effects in developed areas.

**Severity Indicators**

**High soil burn severity:** Most or all of the pre-fire ground cover and surface organic matter (litter, duff, and fine roots) is generally consumed, and charring may be visible on larger roots. Soil is often gray, orange, or reddish at the ground surface where large or dense fuels were concentrated and consumed. Soil structure is often altered and less stable at the surface.

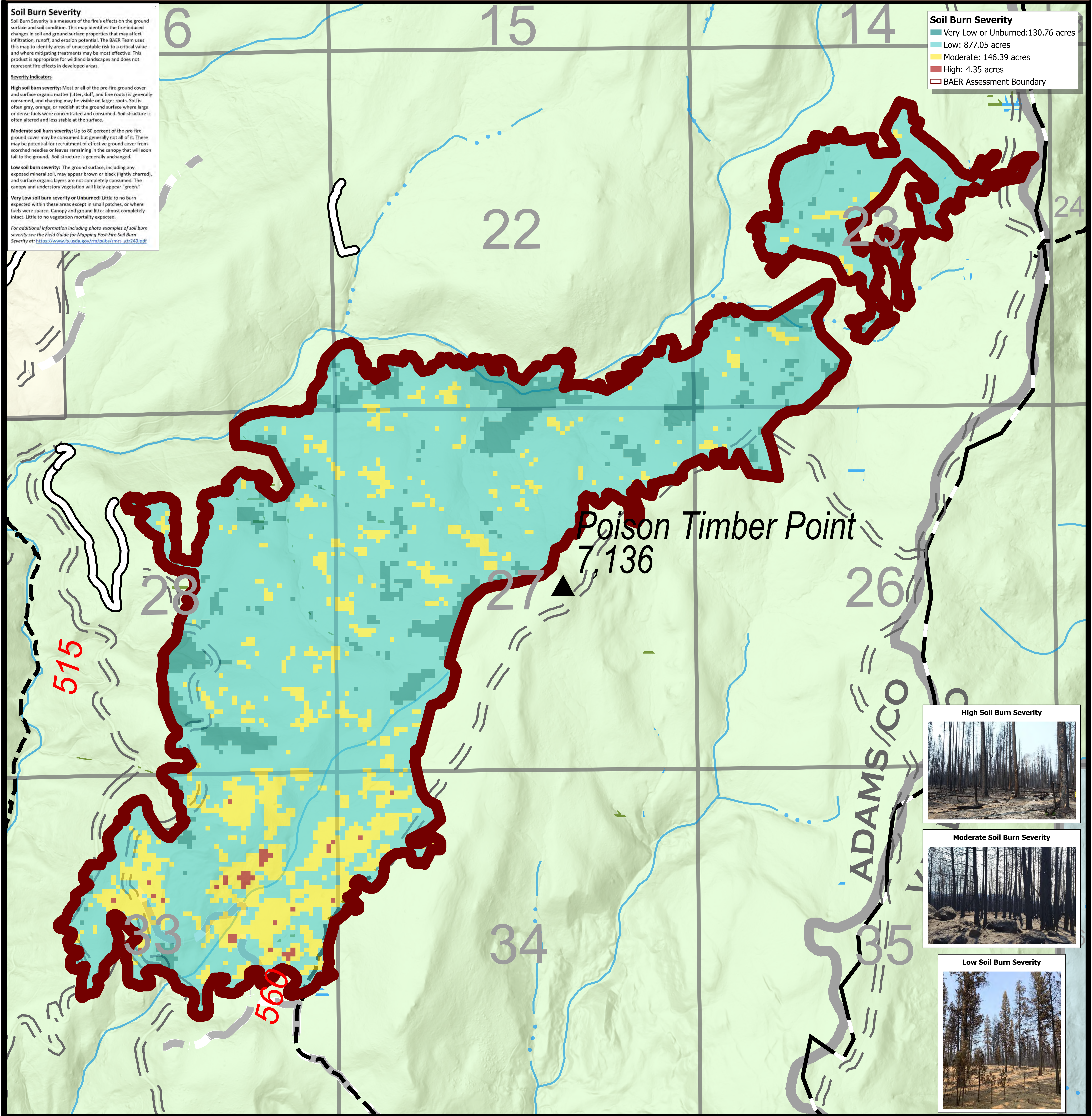
**Moderate soil burn severity:** Up to 80 percent of the pre-fire ground cover may be consumed but generally not all of it. There may be potential for recruitment of effective ground cover from scorched needles or leaves remaining in the canopy that will soon fall to the ground. Soil structure is generally unchanged.

**Low soil burn severity:** The ground surface, including any exposed mineral soil, may appear brown or black (lightly charred), and surface organic layers are not completely consumed. The canopy and understory vegetation will likely appear "green."

**Very Low soil burn severity or Unburned:** Little to no burn expected within these areas except in small patches, or where fuels were sparse. Canopy and ground litter almost completely intact. Little to no vegetation mortality expected.

*For additional information including photo examples of soil burn severity see the Field Guide for Mapping Post-Fire Soil Burn Severity at: [https://www.fs.usda.gov/im/pubs/emr\\_4tc243.pdf](https://www.fs.usda.gov/im/pubs/emr_4tc243.pdf)*

Soil Burn Severity	
Very Low or Unburned:	130.76 acres
Low:	877.05 acres
Moderate:	146.39 acres
High:	4.35 acres
BAER Assessment Boundary	



0 0.15 0.3 Miles

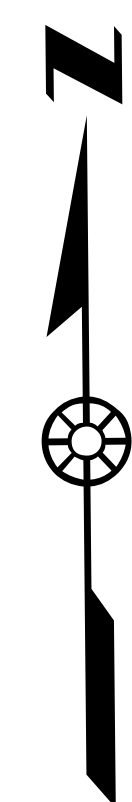
**Disclaimer:**  
 This is a product of BAER rapid assessment.

Further information concerning the accuracy and appropriate uses of this data may be obtained from the USDA Forest Service. The Forest Service, makes no warranty, expressed or implied, including the warranties of merchantability and fitness for a particular purpose, nor assumes any legal liability or responsibility for the accuracy, reliability, completeness or utility of these geospatial data, or for the improper or incorrect use of these geospatial data.

These geospatial data and related maps or graphics are not legal documents and are not intended to be used as such. The data and maps may not be used to determine title, ownership, legal descriptions, boundaries, legal jurisdiction, or restrictions that may be in place on either public or private land. Natural hazards may or may not be depicted on the data and maps, and land users should exercise due caution. The data is dynamic and may change over time. The user is responsible to verify the limitations of the geospatial data and to use the data accordingly.

- Trail
- Roads by Operational Maintenance Level
  - Basic Custodial Care (Closed)
  - High Clearance Vehicles
  - Existing

- Land Ownership
  - Forest Service
  - Private
  - State



10/2/2024

NAD 1983 UTM Zone 11N

