



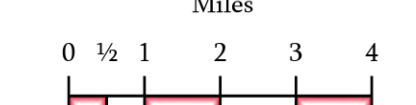
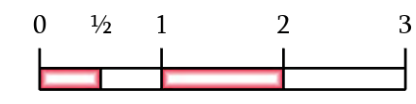
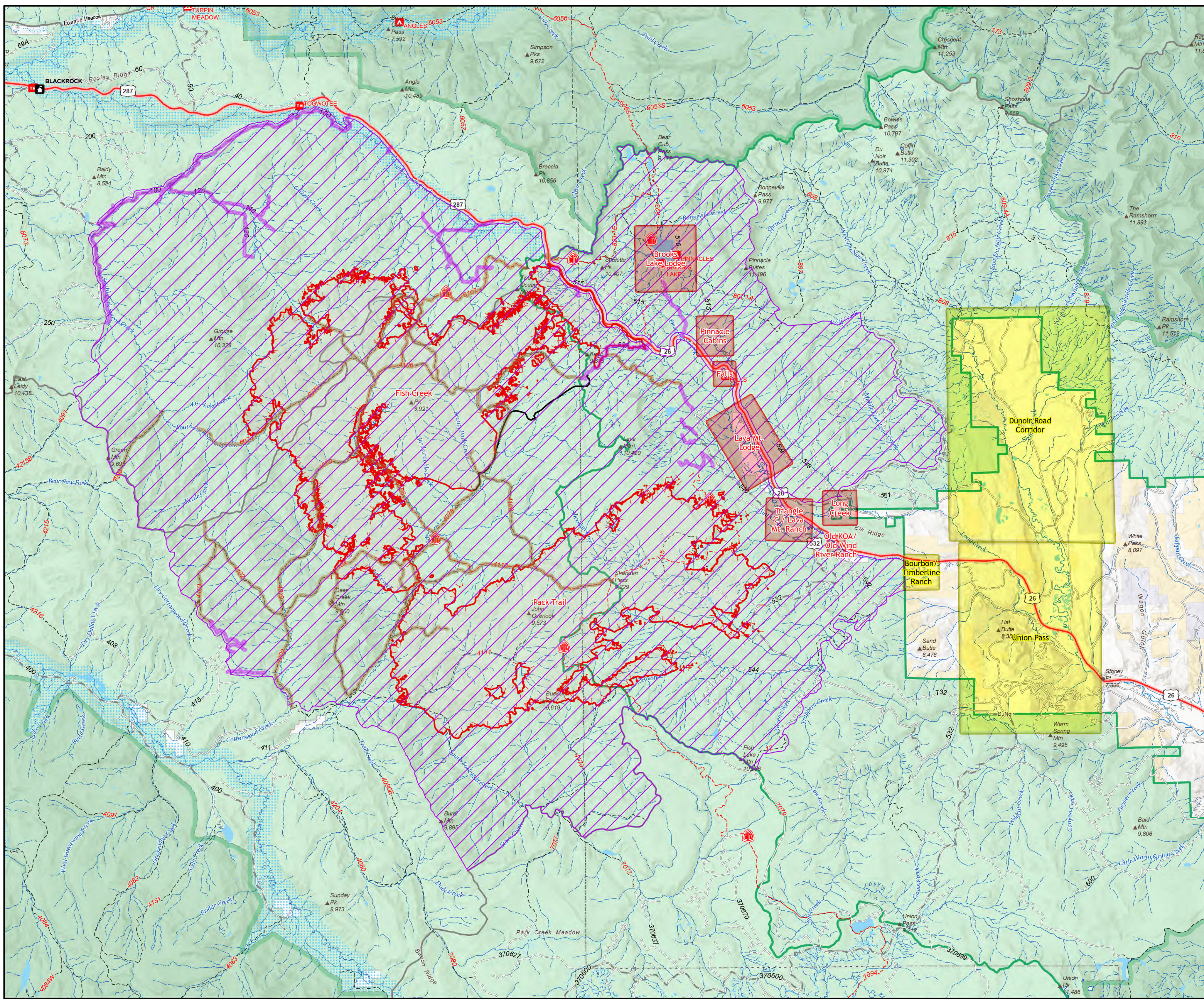


Public Info Map
Fish Creek Fire
 WY-BTF-002146
Pack Trail Fire
 WY-BTF-002439
 October 5, 2024

Fish Creek: 26,313 Acres as of 10/05 | 02:20
 Pack Trail: 22,337 Acres as of 10/05 | 02:30

-  Contained
-  Uncontained
-  Wildfire Perimeter
- Evacuation Warnings**
-  Set
-  Go
- Fire Closure Order #04-03-24-314**
-  Closure Area
-  Closed Road
-  Closed Trail



1:100,000