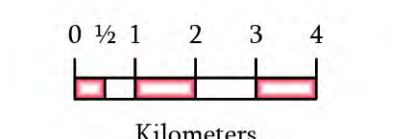
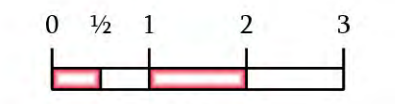
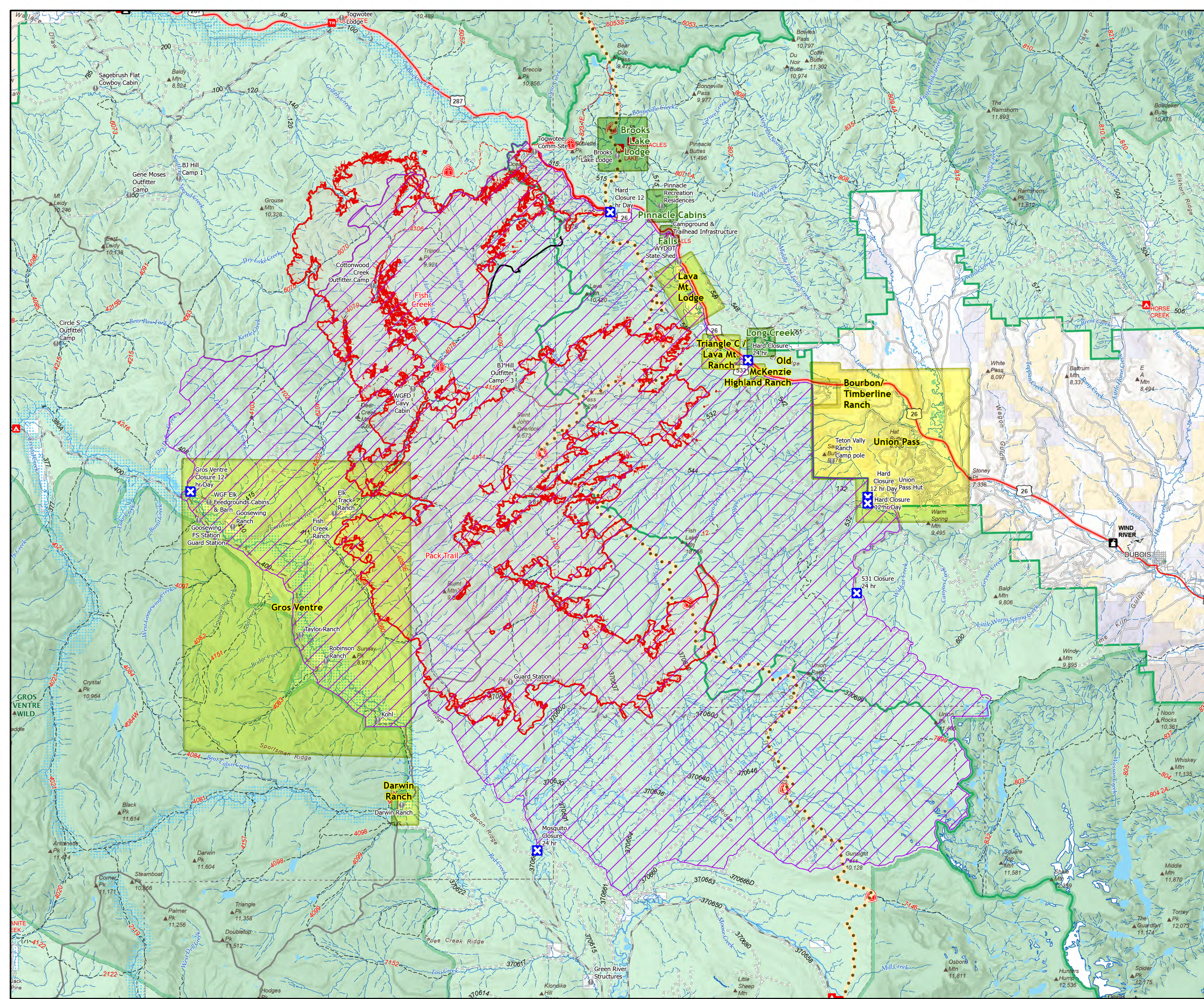


# Evacuations Map

**Pack Trail Fire**  
WY-BTF-002439  
October 18, 2024  
89,186 Acres as of  
10/16 | 2018

- Contained
- Uncontained
- Wildfire Perimeter
- Closure
- Value at Risk
- Continental Divide
- National Scenic Trail
- Evacuation Warnings**
- Ready
- Set
- Fire Closure Order #04-03-24-317



1:125,250