



Smoke Outlook

Salmon Challis Redrock, Garden, Farrow, Mowitch

10/13 - 10/14

Issued by [Wildland Fire Air Quality Response Program](#) on October 13, 2024 at 06:33 AM MDT

Special Statement

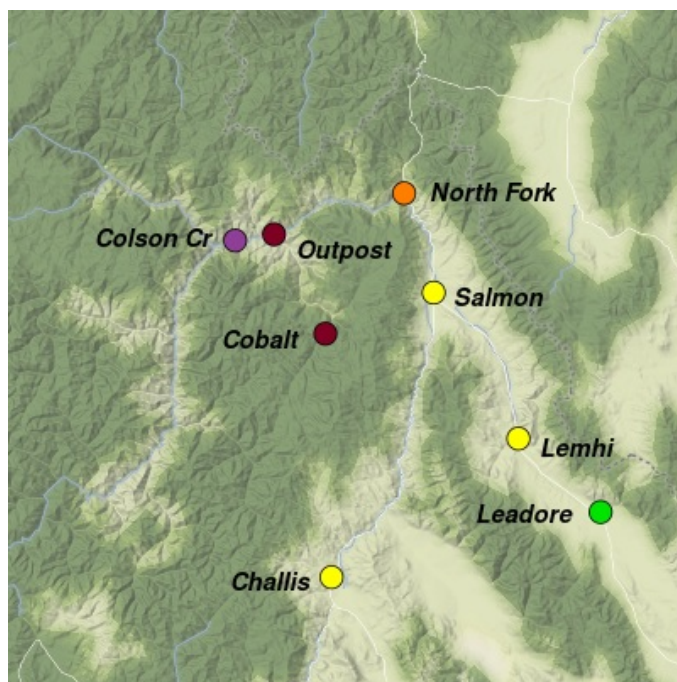
IDAHO DEQ has issued an air quality advisory to advise residents of Lemhi County of degraded air quality. No open burn rule is in effect.

Fire

Firefighters were successful in their firing operations along FR 020 on the east side and around the Yellowjacket Guard Station. The ignitions removed fuels ahead of the main fire to prevent fire spread. Dozers will continue to secure sections from Moyer Peak to the west. The smoke blanket and light winds hanging over the area will limit opportunities for large growth and support firing operations to secure these lines.

Smoke

Light hazy skies from Leadore to Lemhi, with increasing surface impacts as you approach Salmon. Light and variable winds will limit relief in the deep drainages west of Salmon. Locations west of Colson Cr may see occasional windows of UNHEALTHY late morning and early afternoon, but limited air movement will bring V. UNHEALTHY to HAZ this evening. Challis can expect hazy moderate conditions most of the day with short periods of USG.



Daily AQI Forecast* for Sunday

Station	Yesterday hourly	Sat 10/12	Comment for Today -- Sun, Oct 13	Forecast*	Sun 10/13	Mon 10/14
	6a noon 6p					
Leadore	No hourly data		Mountains will be more visible today with limited surface impacts this afternoon		Good	Good
Lemhi	No hourly data		Smokey skies most of the day with small windows of improvement evening.		Moderate	Good
North Fork	No hourly data		Hazy skies on the river this morning with minimal improvement most of the day.		USG	USG
Cobalt		Very Unhealthy	Increasing smoke will struggle to lift out of the HWY-55 drainage all day		Very Unhealthy	Very Unhealthy
Duncan's Outpost	No hourly data		Thick smoke on the river with minimal improvement all day		Very Unhealthy	Very Unhealthy
Colson's Creek	No hourly data		Overnight smoke will struggle to disperse until late afternoon/early evening		Very Unhealthy	Very Unhealthy
Challis	No hourly data		Hazy skies with short periods of USG can be expected until late evening		Moderate	Good
Salmon		Moderate	MODERATE smoke most of the day interrupted by USG midday		Moderate	Moderate

Issued Oct 13, 2024 by Jen Croft 202-794-0207

Air Quality Index (AQI)	Actions to Protect Yourself
Good	None
Moderate	Unusually sensitive individuals should consider limiting prolonged or heavy exertion.
USG	People within Sensitive Groups* should reduce prolonged or heavy outdoor exertion.
Unhealthy	People within Sensitive Groups* should avoid all physical outdoor activity.
Very Unhealthy	Everyone should avoid prolonged or heavy exertion.
Hazardous	Everyone should avoid any outdoor activity.

***Disclaimer:** This forecast is based on fine particulates only; ozone is not included. Forecasts may be wrong; use at own risk. Use caution as conditions can change quickly. See your health professional as needed. Smoke sensitive groups should take appropriate precautions.

Additional Links

[Inciweb- Red Rock/Black Diamond](#) -- <https://inciweb.wildfire.gov/incident-information/idscf-red-rock-fire>

[Salmon Challis National Forest](#) -- <https://www.fs.usda.gov/main/scnf/fire>

[Inciweb- Garden Fire](#) -- <https://inciweb.wildfire.gov/incident-information/idscf-garden-fire>

--



Issued by Interagency Wildland Fire Air Quality Response Program -- www.wildlandfiresmoke.net

Salmon Challis Updates -- <https://outlooks.wildlandfiresmoke.net/outlook/ded7837a>

*Smoke and Health Info -- www.airnow.gov/air-quality-and-health/fires-and-your-health