



# Smoke Outlook

Salmon Challis Redrock, Garden, Farrow, Mowitch

10/12 - 10/13

Issued by [Wildland Fire Air Quality Response Program](#) on October 12, 2024 at 06:49 AM MDT

## Special Statement

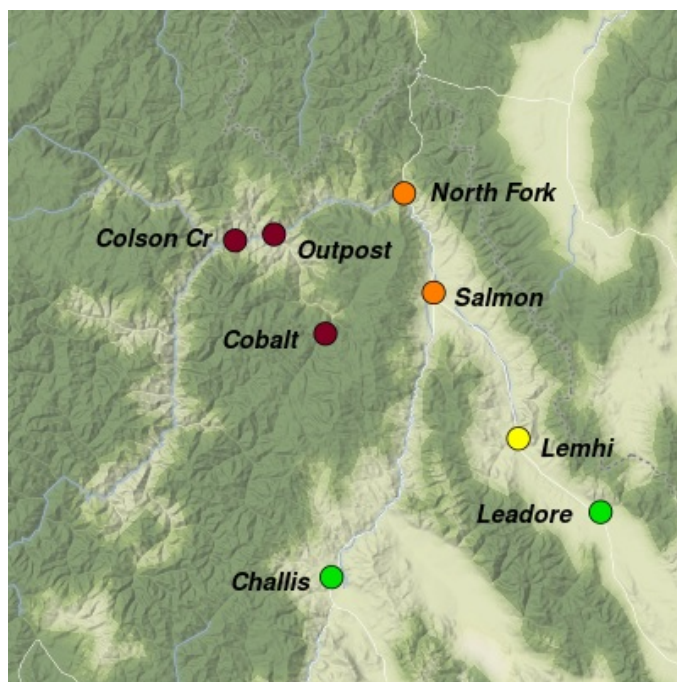
IDAHO DEQ has issued an air quality advisory to advise residents of Lemhi County of degraded air quality. No open burn rule is in effect.

## Fire

Crews are taking advantage of the limited winds to secure firelines with strategic firing operations. Large logs, trees, and rocks continue to tumble downhill challenging lines. The shorter days are limiting the active fire growth and allowing good progress to be made along perimeters. Limited opportunity for aircraft assistance due to low visibility in the drainages.

## Smoke

Expect the forecast area to remain under a smoke blanket for the next few days. Limited surface level winds are restricting the movement of smoke, trapping the additional smoke being produced on all active fires. HAZARDOUS conditions will dominate in Cobalt, Deep Cr, Panther Cr, and along the River Rd. Lemhi valley has a small potential for improving conditions this afternoon, but as temps drops a return of USG conditions can be expected in locations closest to Salmon.



Daily AQI Forecast\* for Saturday

Station	Yesterday hourly	Fri 10/11	Comment for Today -- Sat, Oct 12	Forecast*	Sat 10/12	Sun 10/13
	6a noon 6p					
Leadore	No hourly data		Potential for clearing skies and limited surface impacts this afternoon		●	●
Lemhi	No hourly data		Smoky skies most of the day with small windows of improvement evening.		●	●
Challis	No hourly data		Clear skies this morning with increasing smoke impacts this afternoon		●	●
North Fork	No hourly data		Increasing smoke into the evening with limited clearing overnight		●	●
Cobalt		●	Increasing smoke will struggle to lift out of the HWY-55 drainage today.		●	●
Duncan's Outpost	No hourly data		Continued HAZARDOUS surface impacts for most of the day.		●	●
Colson's Creek	No hourly data		Overnight smoke will struggle to disperse until late afternoon/early evening		●	●
Salmon		●	MODERATE smoke most of the day with short periods of USG in the evening		●	●

Issued Oct 12, 2024 by Jen Croft 202-794-0207

Air Quality Index (AQI)	Actions to Protect Yourself
● Good	None
● Moderate	Unusually sensitive individuals should consider limiting prolonged or heavy exertion.
● USG	People within Sensitive Groups* should <b>reduce</b> prolonged or heavy outdoor exertion.
● Unhealthy	People within Sensitive Groups* should <b>avoid all</b> physical outdoor activity.
● Very Unhealthy	Everyone should avoid prolonged or heavy exertion.
● Hazardous	Everyone should avoid any outdoor activity.

**\*Disclaimer:** This forecast is based on fine particulates only; ozone is not included. Forecasts may be wrong; use at own risk. Use caution as conditions can change quickly. See your health professional as needed. Smoke sensitive groups should take appropriate precautions.

## Additional Links

[Inciweb- Red Rock/Black Diamond](#) -- <https://inciweb.wildfire.gov/incident-information/idscf-red-rock-fire>

[Inciweb- Garden Fire](#) -- <https://inciweb.wildfire.gov/incident-information/idscf-garden-fire>

[Fire Info-Salmon Challis National Forest](#) -- <https://www.fs.usda.gov/main/scnf/fire>

--



Issued by Interagency Wildland Fire Air Quality Response Program -- [www.wildlandfiresmoke.net](http://www.wildlandfiresmoke.net)

Salmon Challis Updates -- <https://outlooks.wildlandfiresmoke.net/outlook/ded7837a>

\*Smoke and Health Info -- [www.airnow.gov/air-quality-and-health/fires-and-your-health](http://www.airnow.gov/air-quality-and-health/fires-and-your-health)