

Lava Fire Map for 10/8/2024

Public Information

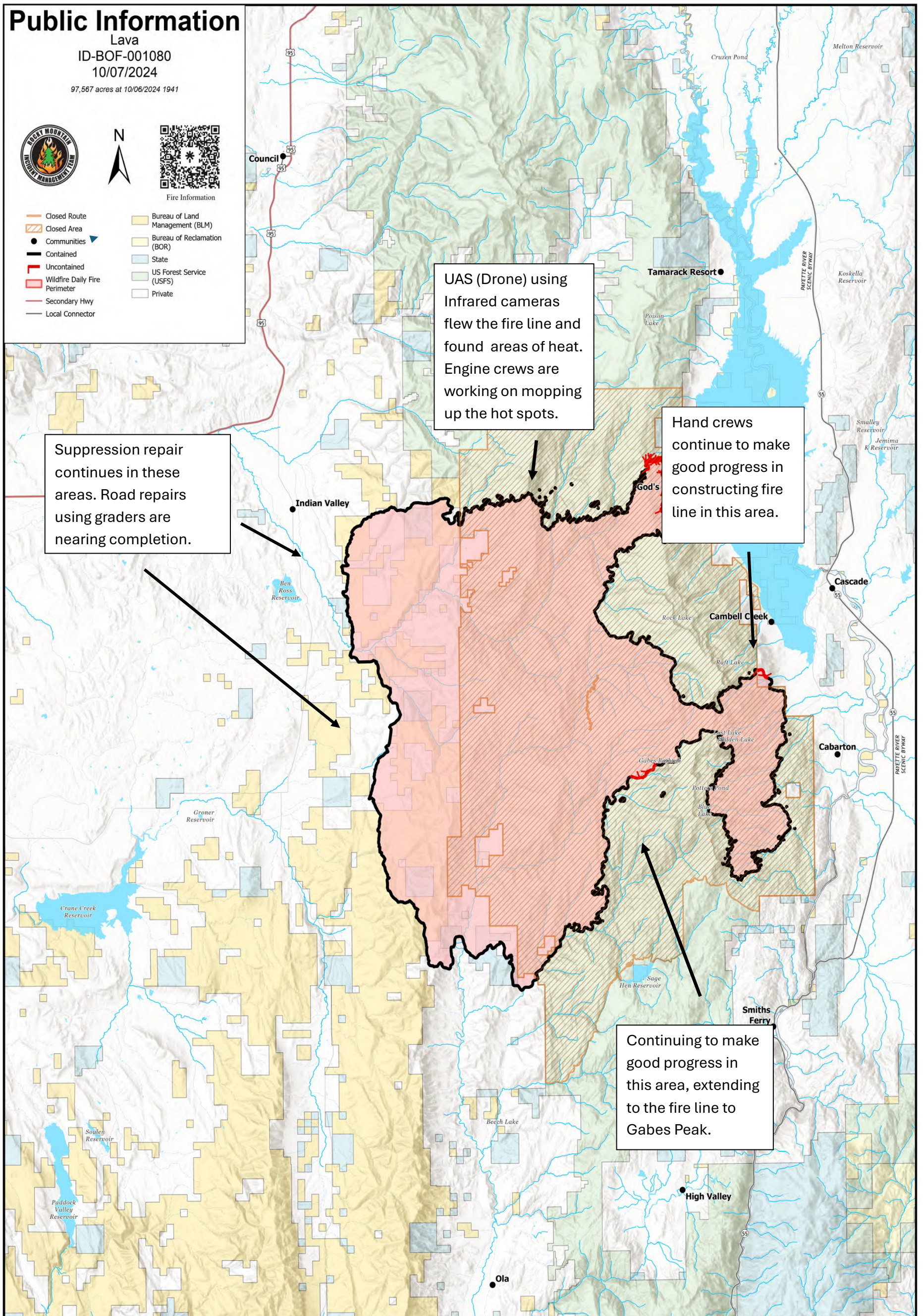
Lava
ID-BOF-001080
10/07/2024

97,567 acres at 10/06/2024 1941



Fire Information

- Closed Route
- Closed Area
- Communities
- Contained
- Uncontained
- Wildfire Daily Fire Perimeter
- Secondary Hwy
- Local Connector
- Bureau of Land Management (BLM)
- Bureau of Reclamation (BOR)
- State
- US Forest Service (USFS)
- Private



UAS (Drone) using Infrared cameras flew the fire line and found areas of heat. Engine crews are working on mopping up the hot spots.

Hand crews continue to make good progress in constructing fire line in this area.

Suppression repair continues in these areas. Road repairs using graders are nearing completion.

Continuing to make good progress in this area, extending to the fire line to Gabes Peak.

Incident Statistics: 97,567 acres, 90% contained, 259 people
Fire Information phone: (208) 780-5003 **Hours:** 7:00 a.m. to 7:00 p.m.
Email: 2024.Lava@firenet.gov