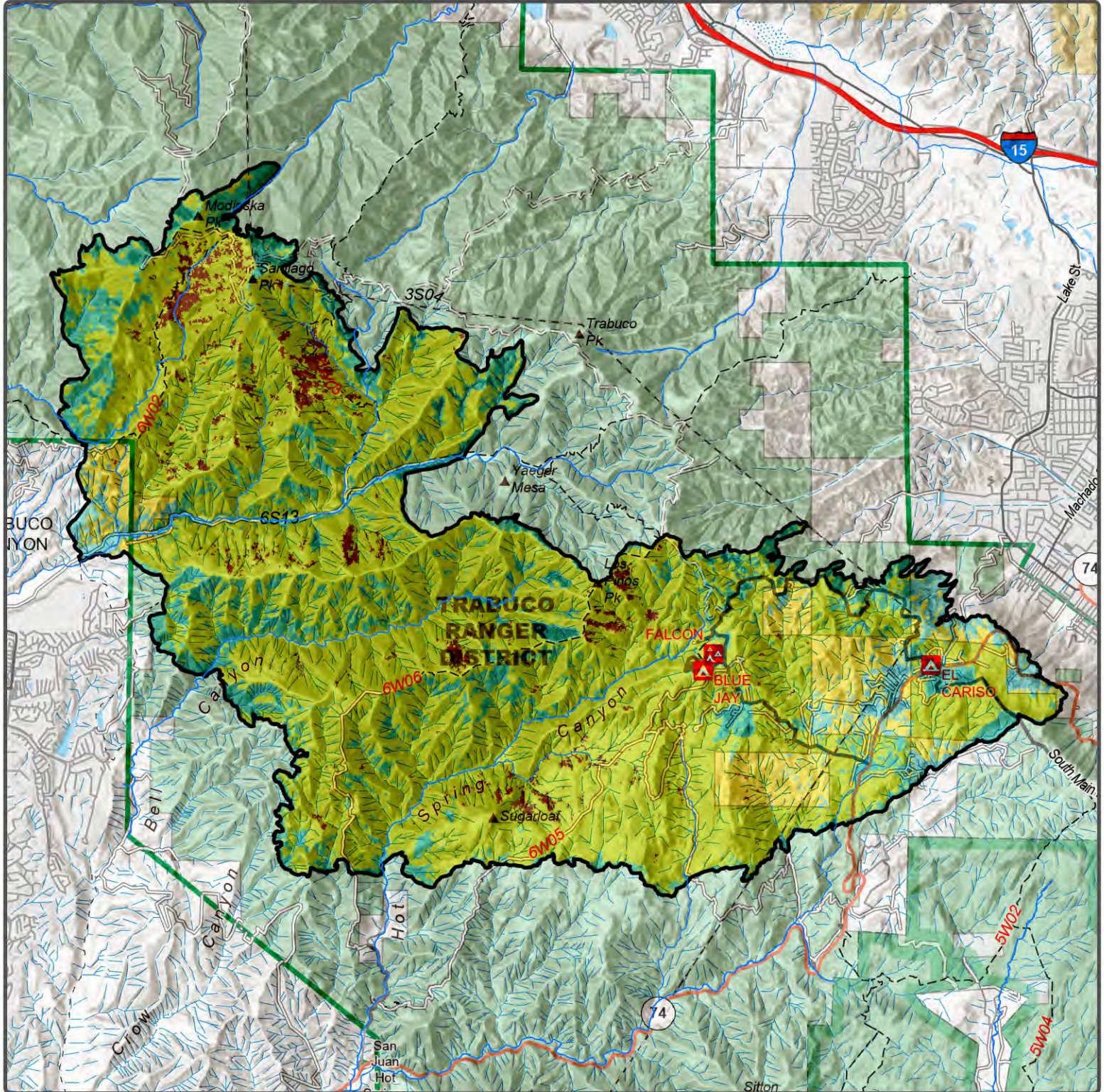




# Soil Burn Severity - Airport Fire - Cleveland National Forest

## Burned Area Emergency Response (BAER)

Date: 9/29/2024



Soil Burn Severity	Acres / Ownership		
	USFS	County	Private
High	643	2	5
Low	3248	187	500
Moderate	16882	313	1152
Unburned / Very Low	627	16	112
<b>Total Acres</b>	<b>21401</b>	<b>517</b>	<b>1770</b>
<b>Percent</b>	<b>90.35%</b>	<b>2.18%</b>	<b>7.47%</b>

**Soil Burn Severity**

- Low \ Unburned
- Low
- Moderate
- High
- Analysis Area

**Disclaimer** This product is a product of BAER rapid assessment. Further information concerning the accuracy and appropriate uses of this data may be obtained from the USDA Forest Service. The Forest Service makes no warranty, expressed or implied, including the warranties of merchantability and fitness for a particular purpose, nor assumes any legal liability or responsibility for the accuracy, reliability, completeness or utility of these geospatial data, or for the improper or incorrect use of these geospatial data. These geospatial data and related maps or graphics are not legal documents and are not intended to be used as such. The data and maps may not be used to determine title, ownership, legal descriptions, boundaries, legal jurisdiction, or restrictions that may be in place on either public or private land. Natural hazards may or may not be depicted on the data and maps, and land users should exercise due caution. The data is dynamic and may change over time. The user is responsible to verify the limitations of the geospatial data and to use the data accordingly.