

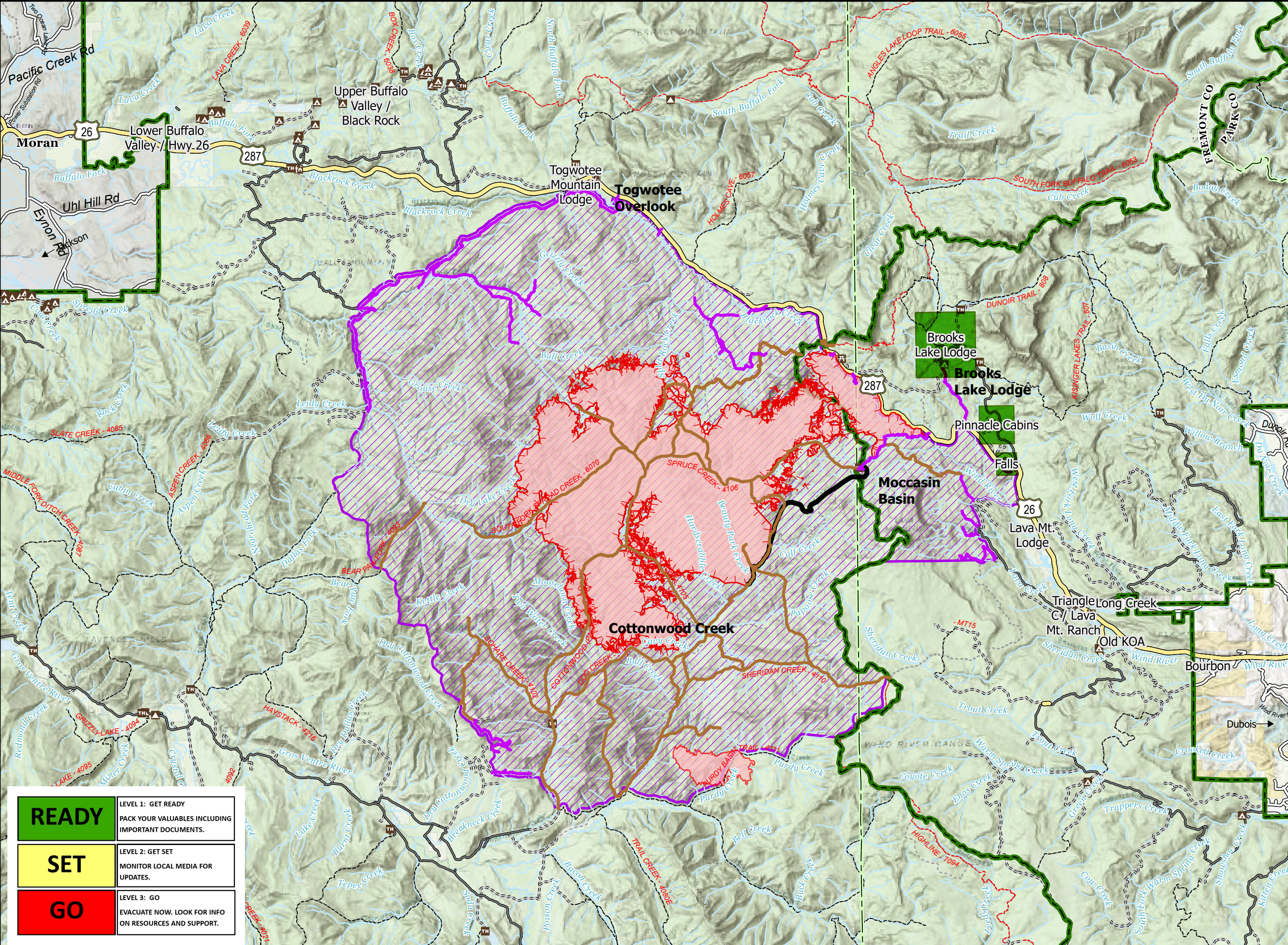
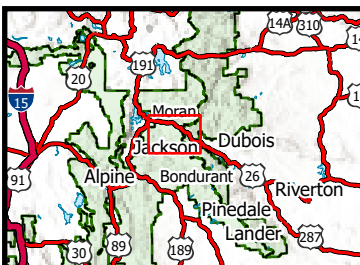
# FISH CREEK PUBLIC INFORMATION

## FISH CREEK & PACK TRAIL WY-BTF-002416

25,080 ACRES AT 9/27/2024 @ 20:25 MDT  
 914 ACRES AT 9/27/2024 @ 20:25 MDT



- Read Set Go
- █ Ready
  - █ Set
  - █ Go
- Wildfire Daily Fire Perimeter
  - Confinement
  - Uncontained
  - Primary Highway
  - Road, Unspecified
  - Trail
  - Continental Divide Trail
  - Campground
  - Camping Area
  - Hotel, Lodge, Resort
  - Interpretive Site
  - Interpretive Visitor Center
  - OHV Staging Area
  - PICNIC SITE
  - Trailhead
  - Bureau of Land Management (BLM)
  - National Park Service (NPS)
  - State
  - US Forest Service (USFS)
  - Private
  - County Boundary
  - Forest Boundary
  - Closed\_Road
  - Closed\_Trail
  - Fire Closure Order #04-03-24-313



READY	LEVEL 1: GET READY PACK YOUR VALUABLES INCLUDING IMPORTANT DOCUMENTS.
SET	LEVEL 2: GET SET MONITOR LOCAL MEDIA FOR UPDATES.
GO	LEVEL 3: GO EVACUATE NOW. LOOK FOR INFO ON RESOURCES AND SUPPORT.