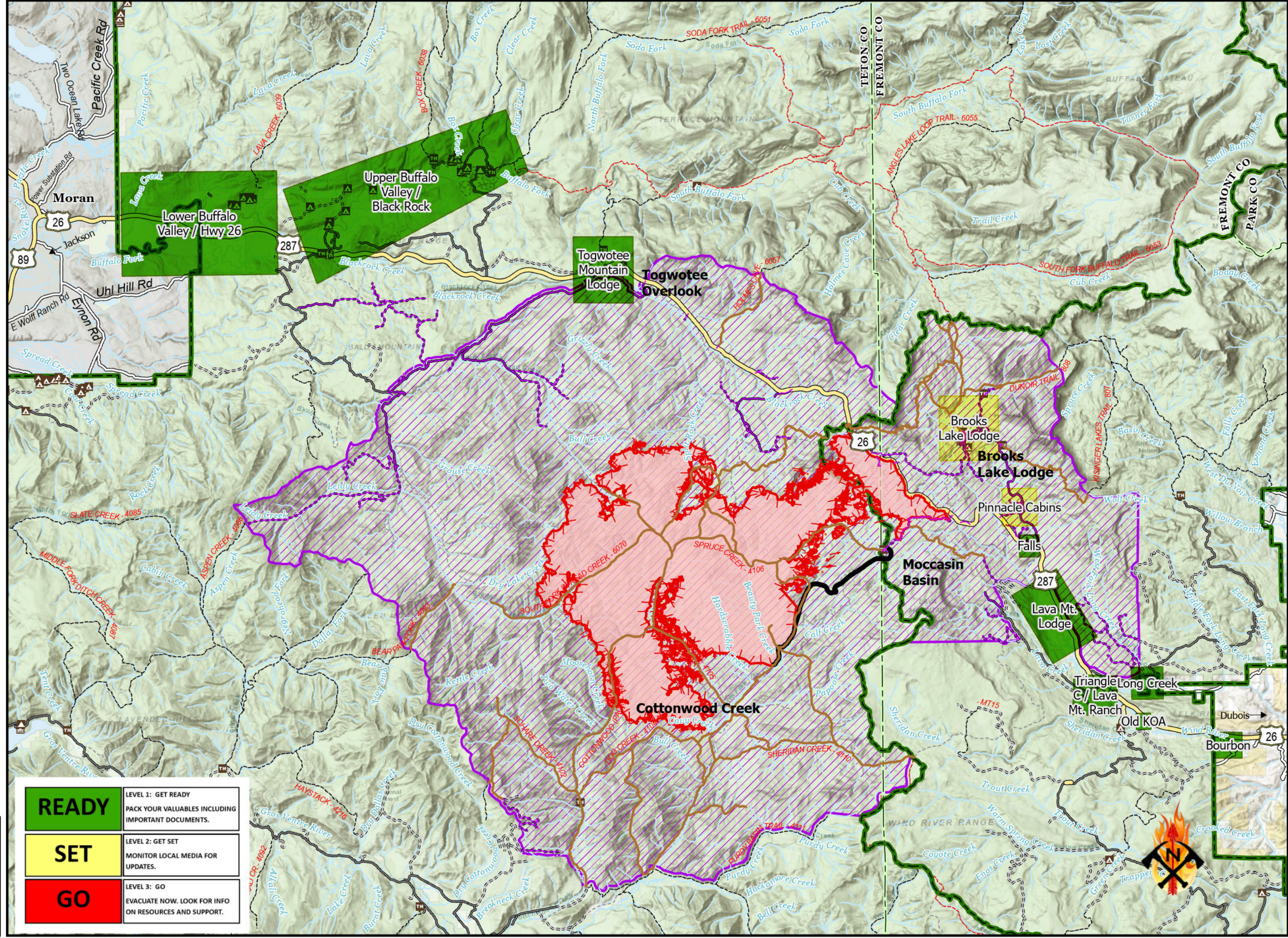
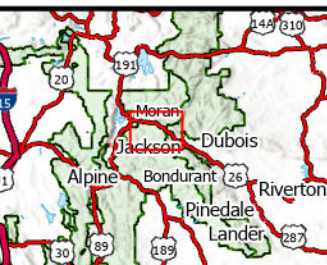
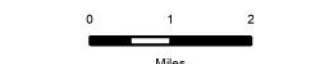


FISH CREEK
PUBLIC INFORMATION
FISH CREEK
WY-BTF-002416
9/15/2024 DAY
24,904 ACRES AT 9/9/2024 2300 HRS



Read Set Go

- Ready
- Set
- Go
- Wildfire Daily Fire Perimeter
- Confinement
- Uncontained
- Primary Highway
- Road, Unspecified
- Trail
- Continental Divide Trail
- BOATING SITE
- Campground
- Camping Area
- Hotel, Lodge, Resort
- Interpretive Site
- Interpretive Visitor Center
- PICNIC SITE
- Trailhead
- Bureau of Land Management (BLM)
- National Park Service (NPS)
- State
- US Forest Service (USFS)
- Private
- County Boundary
- Forest Boundary
- Fire Closure Order #04-03-24-312
- Closed_Road
- Closed_Trail



READY	LEVEL 1: GET READY PACK YOUR VALUABLES INCLUDING IMPORTANT DOCUMENTS.
SET	LEVEL 2: GET SET MONITOR LOCAL MEDIA FOR UPDATES.
GO	LEVEL 3: GO EVACUATE NOW. LOOK FOR INFO ON RESOURCES AND SUPPORT.

