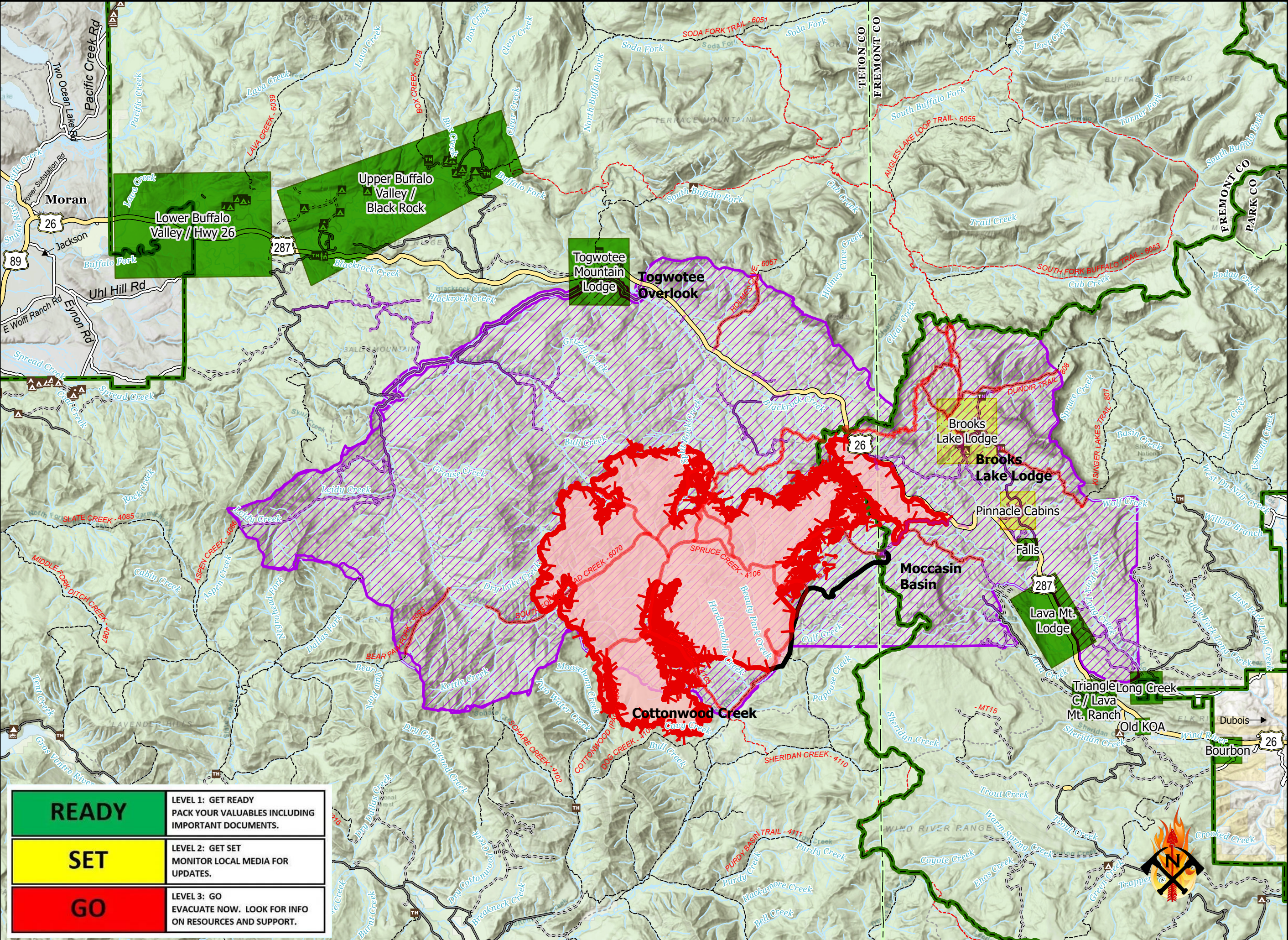
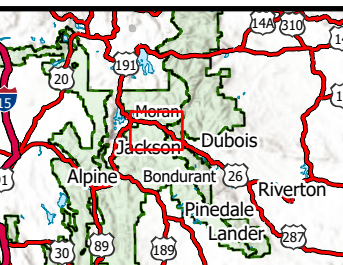
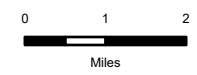


FISH CREEK
PUBLIC INFORMATION
FISH CREEK
WY-BTF-002416
9/11/2024 DAY
24,904 ACRES AT 9/9/2024 2300 HRS



- Read Set Go**
- Ready
 - Set
 - Go
 - Fire Closure Order #04-03-24-310
 - Closed Road
 - Closed Trail
 - Wildfire Daily Fire Perimeter
 - Confinement
 - Uncontained
 - Primary Highway
 - Road, Unspecified
 - Trail
 - Continental Divide Trail
 - BOATING SITE
 - Campground
 - Camping Area
 - Hotel, Lodge, Resort
 - Interpretive Site
 - Interpretive Visitor Center
 - PICNIC SITE
 - Trailhead
 - Bureau of Land Management (BLM)
 - National Park Service (NPS)
 - State
 - US Forest Service (USFS)
 - Private
 - County Boundary
 - Forest Boundary



READY	LEVEL 1: GET READY PACK YOUR VALUABLES INCLUDING IMPORTANT DOCUMENTS.
SET	LEVEL 2: GET SET MONITOR LOCAL MEDIA FOR UPDATES.
GO	LEVEL 3: GO EVACUATE NOW. LOOK FOR INFO ON RESOURCES AND SUPPORT.

