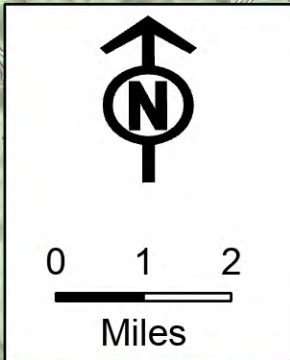
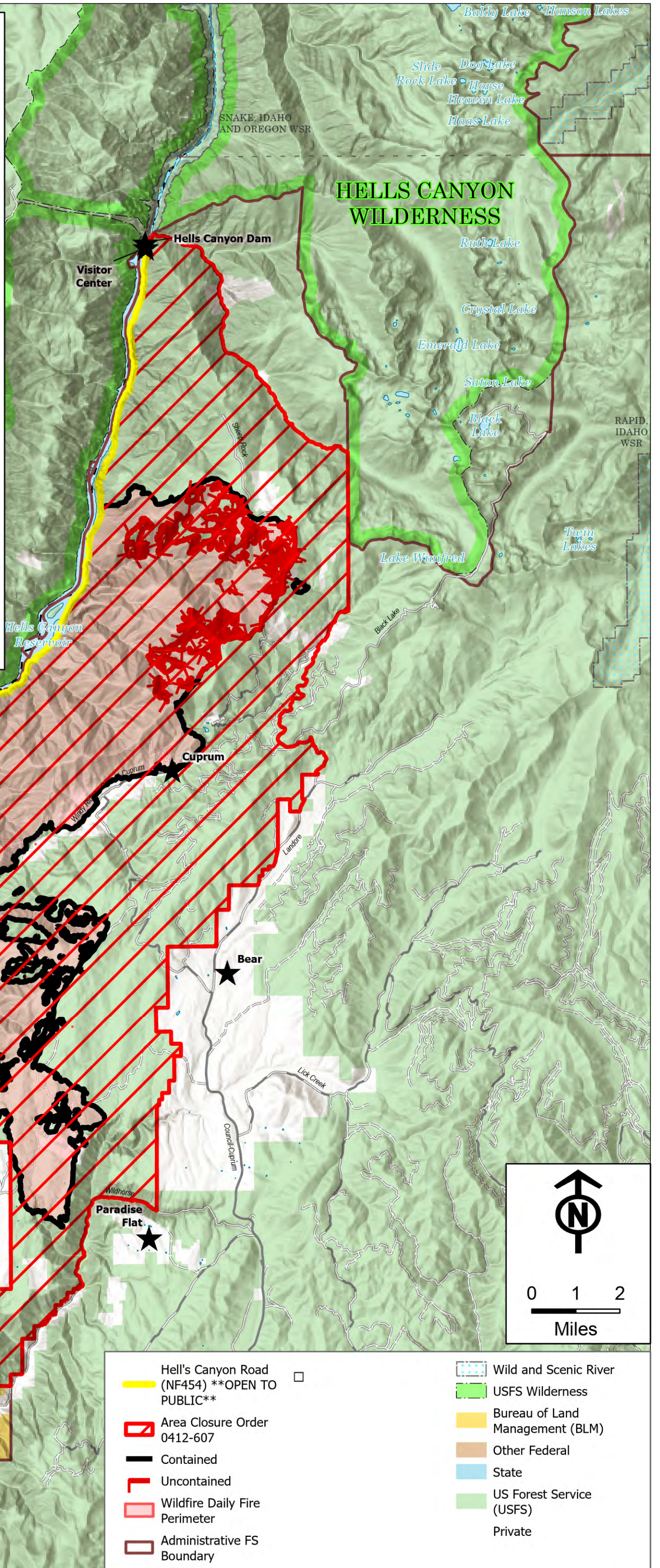
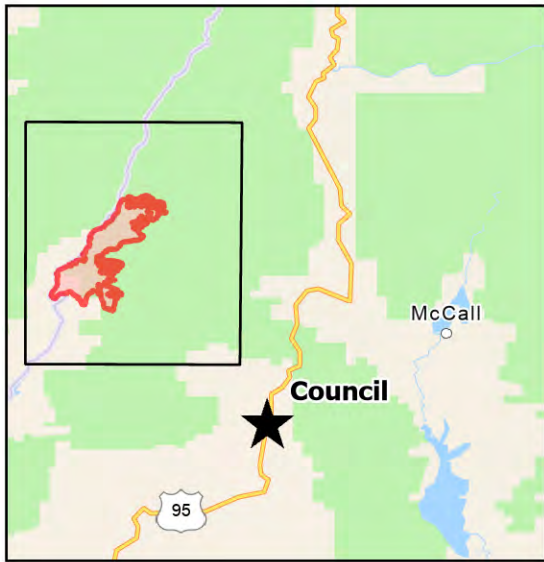


# LIMEPOINT

9/4/2024  
DAY

32,998 ACRES  
95% CONTAINED



- |   |                                 |
|---|---------------------------------|
| Hell's Canyon Road (NF454) **OPEN TO PUBLIC** | Wild and Scenic River           |
| Area Closure Order 0412-607                   | USFS Wilderness                 |
| Contained                                     | Bureau of Land Management (BLM) |
| Uncontained                                   | Other Federal                   |
| Wildfire Daily Fire Perimeter                 | State                           |
| Administrative FS Boundary                    | US Forest Service (USFS)        |
|   | Private                         |