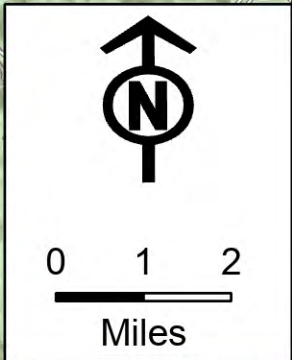
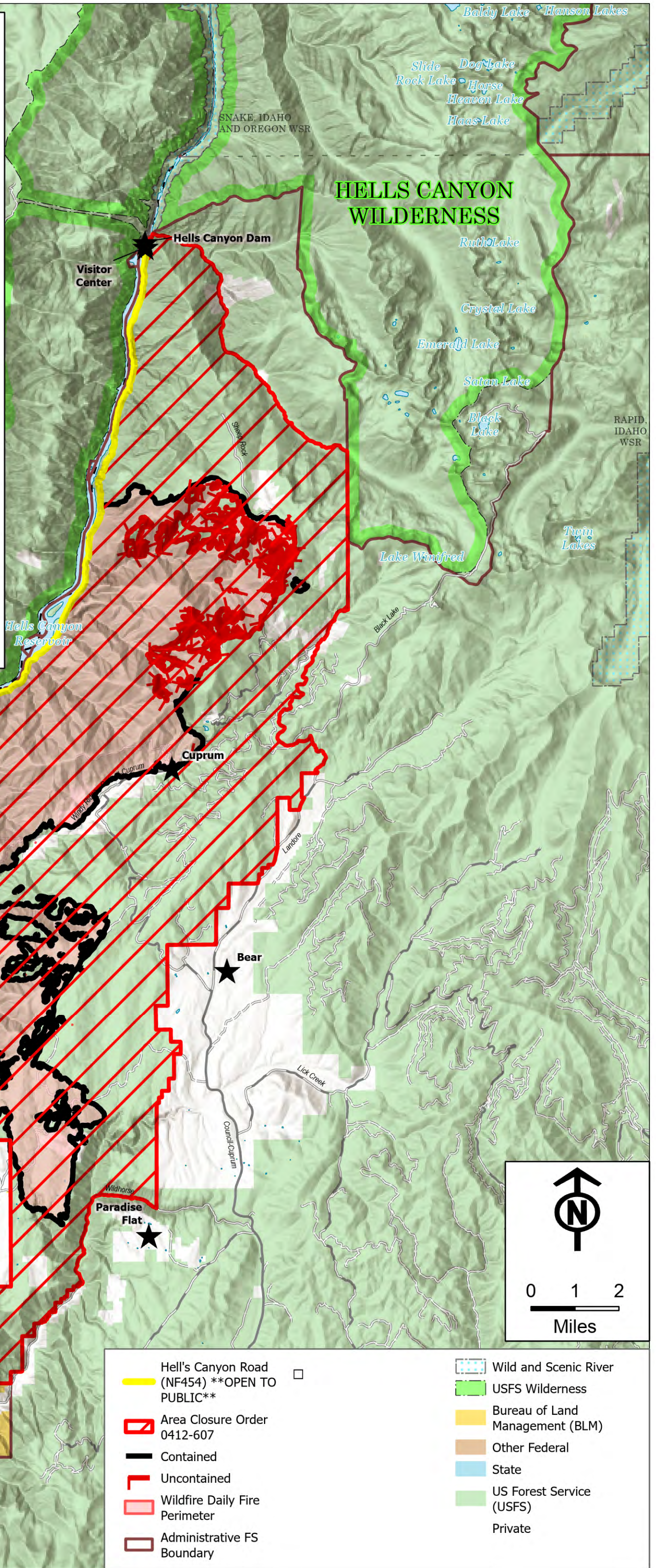
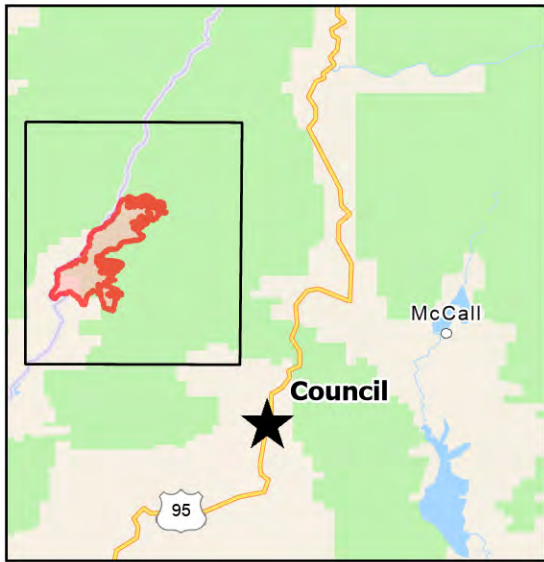


LIMEPOINT

9/3/2024
DAY

32,975 ACRES
95% CONTAINED



- | | |
|---|---------------------------------|
| Hell's Canyon Road (NF454) **OPEN TO PUBLIC** | Wild and Scenic River |
| Area Closure Order 0412-607 | USFS Wilderness |
| Contained | Bureau of Land Management (BLM) |
| Uncontained | Other Federal |
| Wildfire Daily Fire Perimeter | State |
| Administrative FS Boundary | US Forest Service (USFS) |
| | Private |