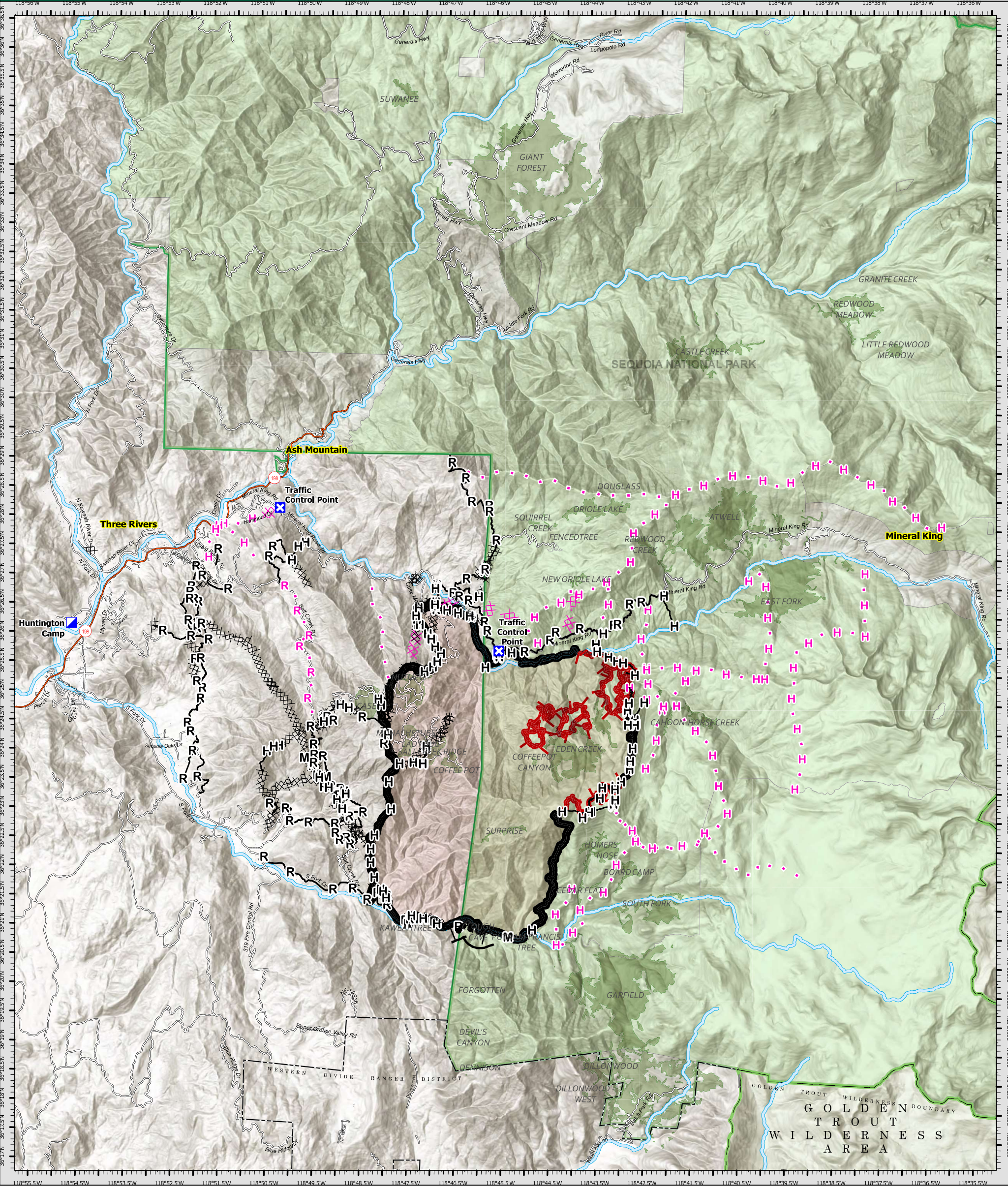
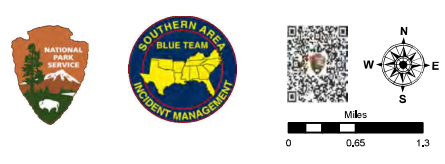


# PUBLIC INFORMATION



**Coffee Pot**  
CA-KNP-000088

- |                                   |                      |                            |                               |
|-----------------------------------|----------------------|----------------------------|-------------------------------|
| Incident Command Post             | Completed Dozer Line | Wilderness                 | Buildings                     |
| Closure                           | Planned Dozer Line   | Park Boundaries            | Contained                     |
| Completed Burnout                 | Planned Hand Line    | USFS Wilderness            | Uncontained                   |
| Completed Hand Line               | Planned Road as Line | USFS Administrative Forest | Wildfire Daily Fire Perimeter |
| Completed Mixed Construction Line | Proposed Line        | USFS Ranger District       |                               |
| Completed Road as Line            | Sequoia Groves       | Counties                   |                               |



Datum: North American 1983  
SA Blue Updated: 8/15/2024 2:51