

# Public Information

09/13/2024

Fossil Complex  
OR953S-024272  
Approx. 24,059 acres at  
09/11/2024 0245 PDT

Evacuations Levels as of:  
09/13/2024 at 14:55 hrs

N



0 5 10

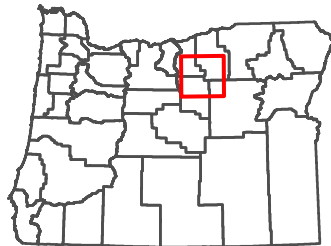
Miles

- Fire Perimeter
- Highway
- Roads
- City Boundaries
- United States Forest Service
- Lonerock Fire

### Evacuation Areas

- Level 1: Be Ready (Prepare to Evacuate)
- Level 2: Be Set (Prepare to leave at a moment's notice)
- Level 3: Go (Leave immediately)

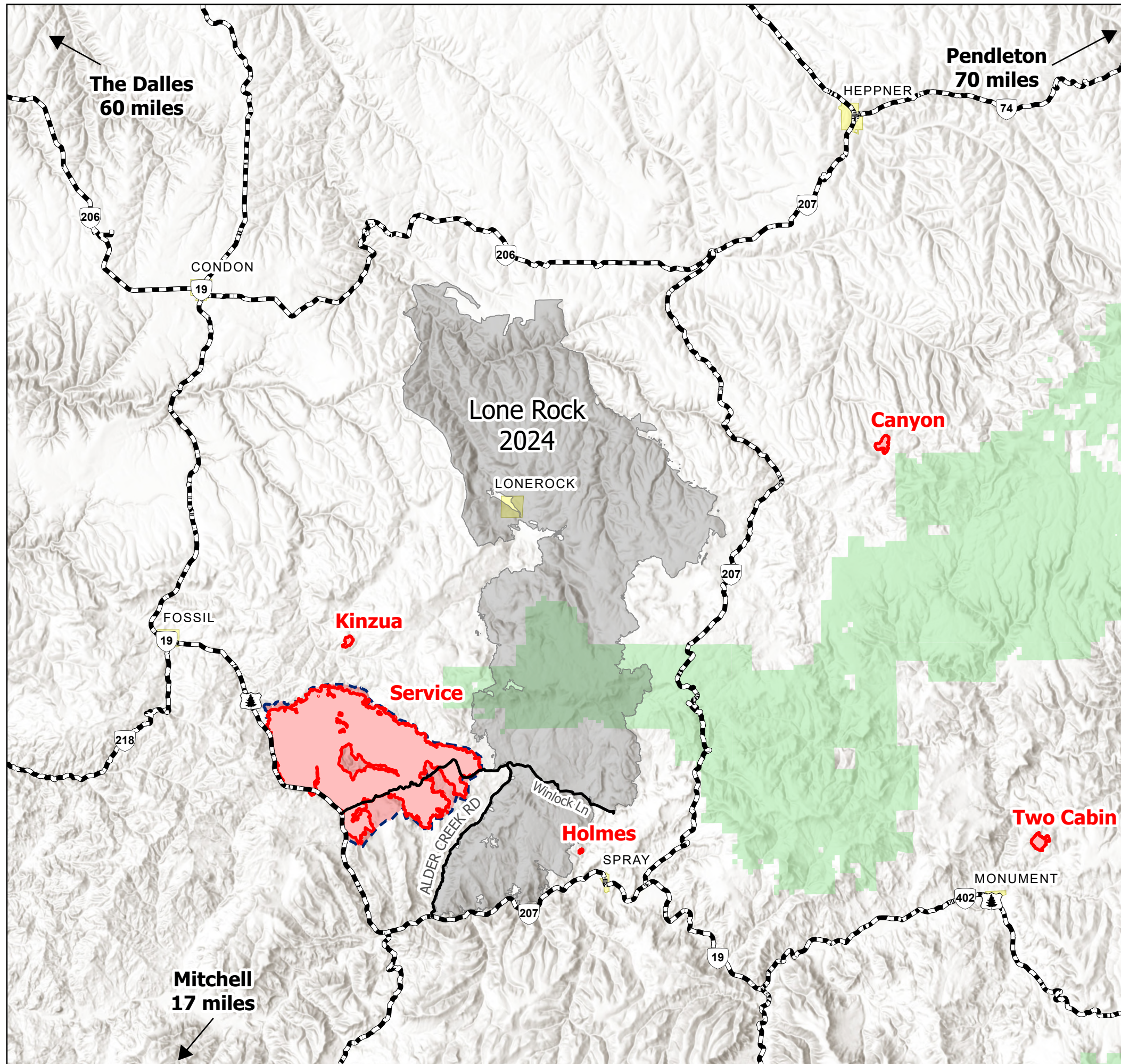
### VICINITY



Scan QR code for more information



Oregon Department of Forestry  
09/13/2024 0759  
Acres from IR and GPS  
North American 1983 Datum



# Información Pública

09/13/2024

Fossil Complex  
OR953S-024272  
Aprox. 24,059 acres apartir  
del día 09/11/2024 0245 PDT

Niveles de evacuación a partir del día:  
09/13/2024 a las 14:55 hrs

N



0 5 10

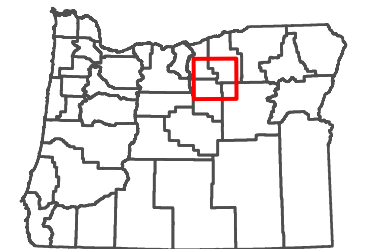
Milas

- Perímetro del Incendio
- Carretera
- Caminos

### Niveles De Evacuación

- Nivel 1: Prepararse (Prepárese para evacuar)
- Nivel 2: Listos (Listo para salir)
- Nivel 3: Fuera (¡Ve ahora!)
- Fronteras de la ciudad
- Servicio Forestal de los EE.UU.
- Incendio Lonerock

### ALREDEDORES



Escanea el código QR para más información



Oregon Department of Forestry  
09/13/2024 0759  
Acres from IR and GPS  
North American 1983 Datum