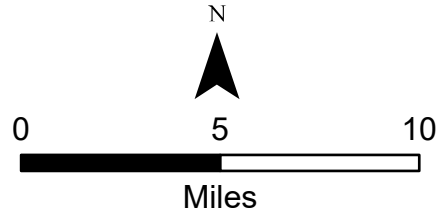


# Public Information

09/12/2024

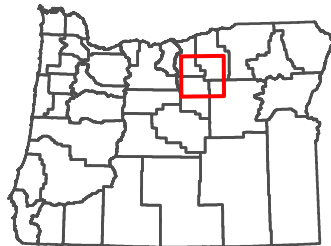
Fossil Complex  
OR953S-024272  
Approx. 22,441 acres at  
09/11/2024 0245 PDT

Evacuations Levels as of:  
09/10/2024 at 20:45 hrs



- Fire Perimeter
- Highway
- Roads
- Evacuation Areas
  - Level 1: Be Ready (Prepare to Evacuate)
  - Level 2: Be Set (Prepare to leave at a moment's notice)
  - Level 3: Go (Leave immediately)
- City Boundaries
- United States Forest Service
- Lonerock Fire

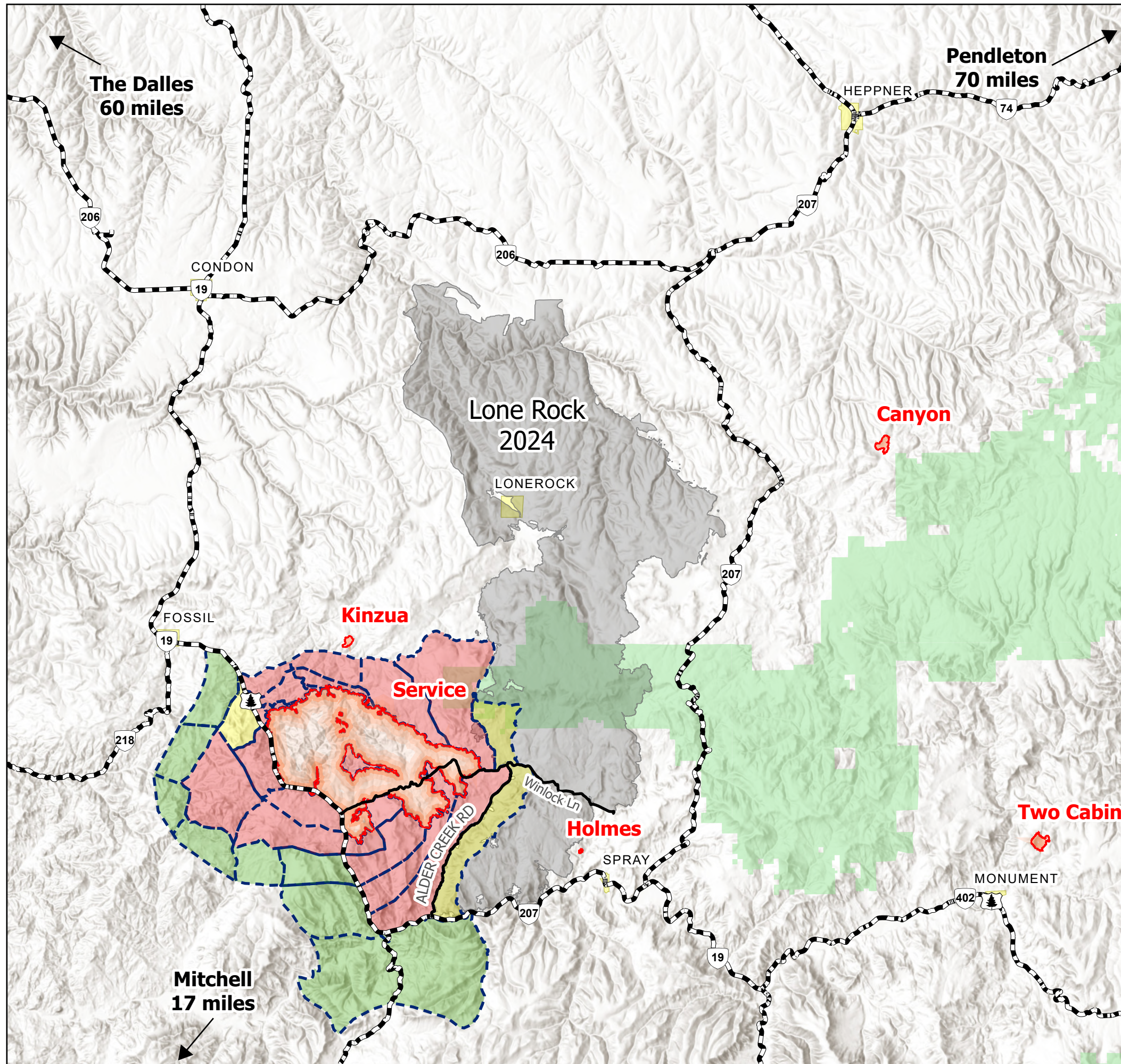
### VICINITY



Scan QR code for more information



Oregon Department of Forestry  
09/12/2024 0950  
Acres from IR and GPS  
North American 1983 Datum

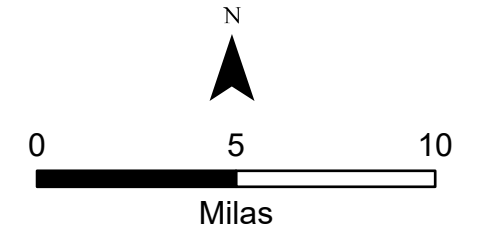


# Información Pública

09/12/2024

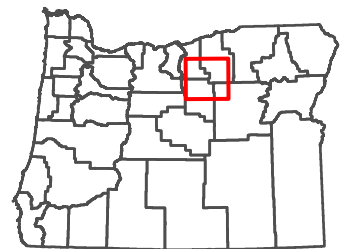
Fossil Complex  
OR953S-024272  
Aprox. 22,441 acres apartir  
del día 09/11/2024 0245 PDT

Niveles de evacuación a partir del día:  
09/10/2024 a las 20:45 hrs



- Perímetro del Incendio
- Carretera
- Caminos
- Niveles De Evacuación
  - Nivel 1: Prepararse (Prepárese para evacuar)
  - Nivel 2: Listos (Listo para salir)
  - Nivel 3: Fuera (¡Ve ahora!)
- Fronteras de la ciudad
- Servicio Forestal de los EE.UU.
- Incendio Lonerock

### ALREDEDORES



Escanea el código QR para más información



Oregon Department of Forestry  
09/12/2024 0950  
Acres from IR and GPS  
North American 1983 Datum