

Public Information

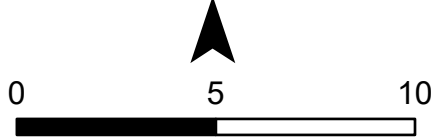
09/11/2024

Fossil Complex
OR953S-024272

Approx. 22,441 acres at
09/11/2024 0245 PDT

Evacuations Levels as of:
09/10/2024 at 20:45 hrs

N



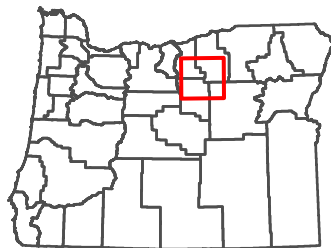
Miles

- Fire Perimeter
- Highway
- Roads

Evacuation Areas

- Level 1: Be Ready (Prepare to Evacuate)
- Level 2: Be Set (Prepare to leave at a moment's notice)
- Level 3: Go (Leave immediately)
- City Boundaries
- United States Forest Service
- Lonerock Fire

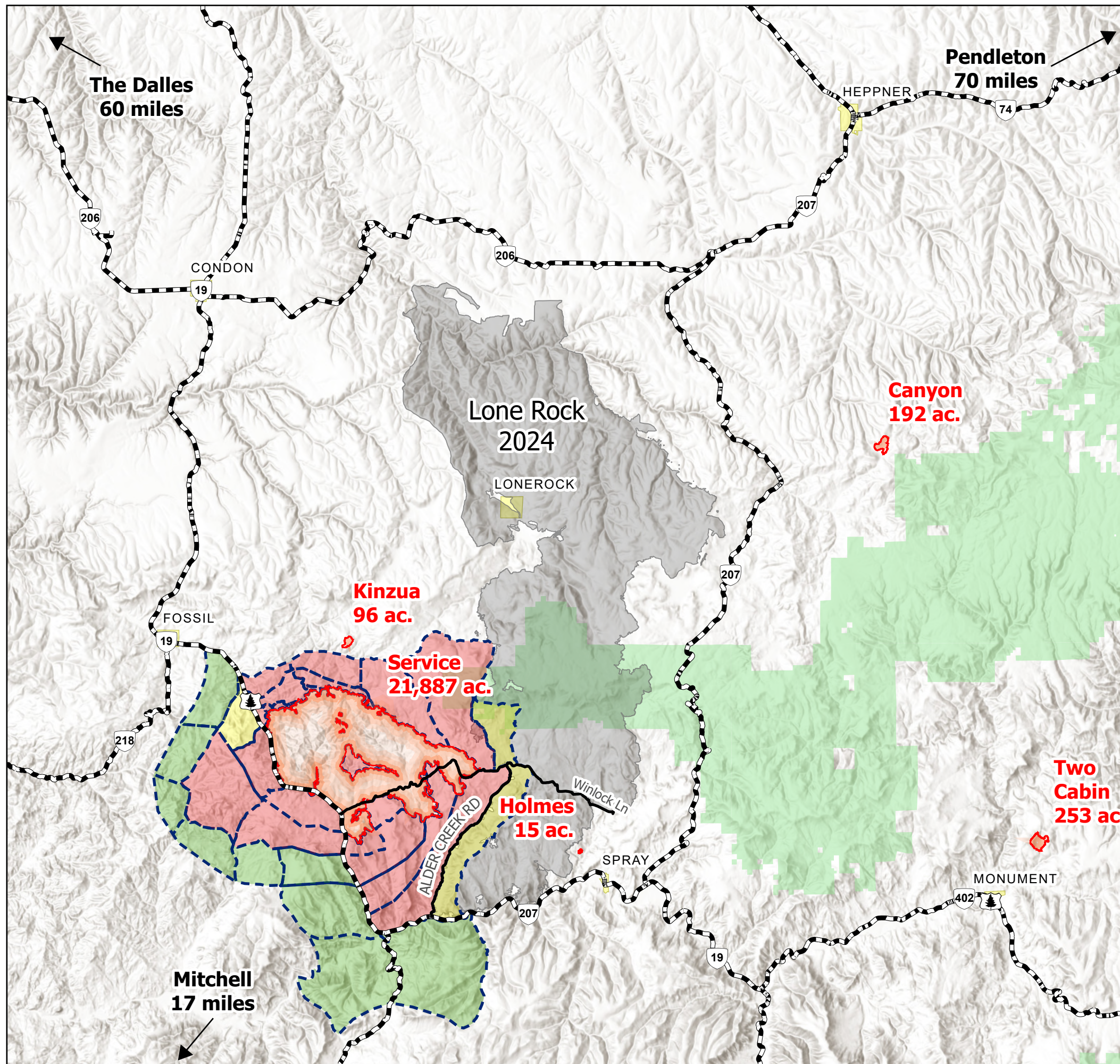
VICINITY



Scan QR code for more information



Oregon Department of Forestry
09/11/2024 1014
Acres from IR and GPS
North American 1983 Datum



Información Pública

09/11/2024

Fossil Complex
OR953S-024272

Aprox. 22,441 acres apartir
del día 09/11/2024 0245 PDT

Niveles de evacuación a partir del día:
09/10/2024 a las 20:45 hrs

N



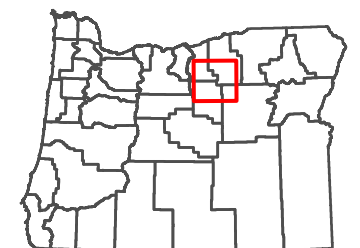
Milas

- Perímetro del Incendio
- Carretera
- Caminos

Niveles De Evacuación

- Nivel 1: Prepararse (Prepárese para evacuar)
- Nivel 2: Listos (Listo para salir)
- Nivel 3: Fuera (¡Ve ahora!)
- Fronteras de la ciudad
- Servicio Forestal de los EE.UU.
- Incendio Lonerock

ALREDEDORES



Escanea el código QR para más información



Oregon Department of Forestry
09/11/2024 1014
Acres from IR and GPS
North American 1983 Datum