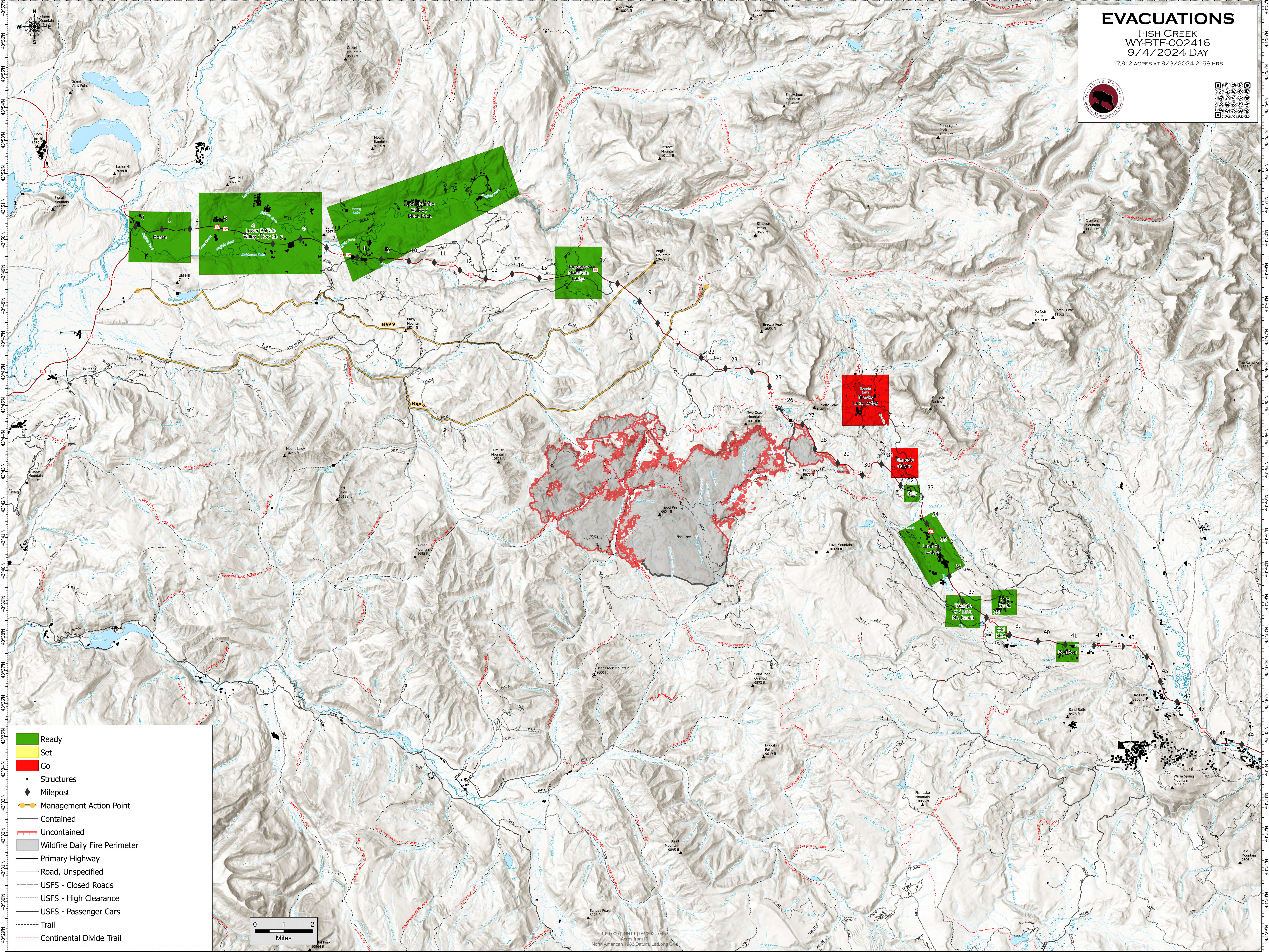


# EVACUATIONS

FISH CREEK  
WY-BTF-002416  
9/4/2024 DAY

17,912 ACRES AT 9/3/2024 2158 HRS



- Ready
- Set
- Go
- Structures
- ◆ Milepost
- Management Action Point
- Contained
- Uncontained
- Wildfire Daily Fire Perimeter
- Primary Highway
- Road, Unspecified
- USFS - Closed Roads
- USFS - High Clearance
- USFS - Passenger Cars
- Trail
- Continental Divide Trail

0 1 2 Miles

1:00,000 NRT1 | 9/4/2024 0457  
Acres from IR  
North American 1983 Datum, Laid, Long Grid