



Smoke Outlook

Central Mountains West Mountain Fires

9/09 - 9/10

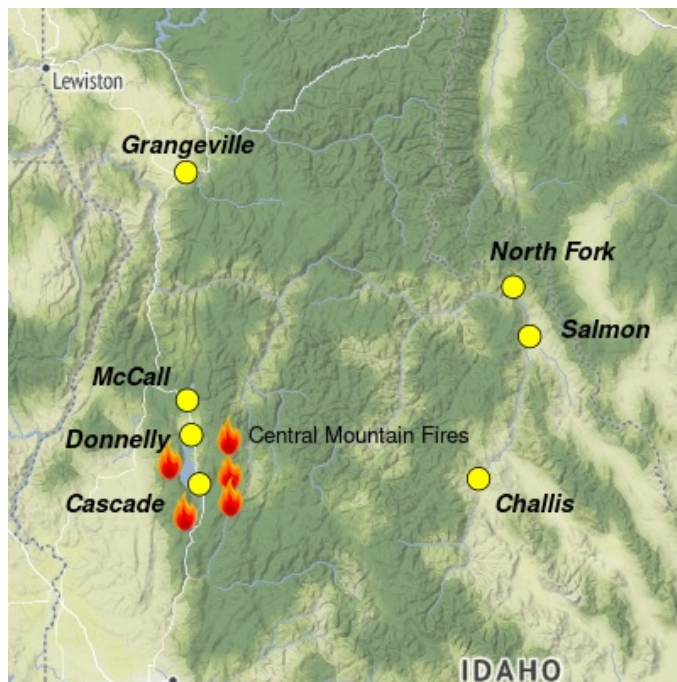
Issued by Wildland Fire Air Quality Response Program on September 09, 2024 at 08:18 AM MDT

Fire

High winds align with steep slopes to create Active fire behavior today. Firefighters can expect rapid rates of fire spread, long flame lengths, group tree torching, and long-distance spotting. Additional information can be found at [West Mountain Fires Inciweb](#)

Smoke

Westerly winds will improve and maintain MODERATE to USG air quality in the Outlook locations Monday through Tuesday. See here for more detailed information on Salmon and Challis: [Central Idaho Smoke Outlook](#).



Daily AQI Forecast* for Monday

Station	Yesterday	Sun 9/08	Comment for Today -- Mon, Sep 09	Forecast*	
	hourly			Mon 9/09	Tue 9/10
Salmon	6a noon 6p	Yellow	MODERATE conditions today.	Yellow	Yellow
Challis	No hourly data	Yellow	MODERATE conditions today.	Yellow	Yellow
Grangeville		Red	MODERATE air quality expected on Monday.	Yellow	Yellow
McCall		Orange	MODERATE air quality overall today with periods of USG in the evening/night.	Yellow	Yellow
North Fork		Orange	Overall MODERATE air quality today.	Yellow	Yellow
Donnelly		Red	Expect MODERATE air quality on Monday with periods of USG.	Yellow	Orange
Cascade		Red	Moderate with periods of USG AQ expected on Monday.	Yellow	Orange

Issued Sep 09, 2024 by Tod Johnson (thattodj@gmail.com)

Air Quality Index (AQI)	Actions to Protect Yourself
Green Good	None
Yellow Moderate	Unusually sensitive individuals should consider limiting prolonged or heavy exertion.
Orange USG	People within Sensitive Groups* should reduce prolonged or heavy outdoor exertion.
Red Unhealthy	People within Sensitive Groups* should avoid all physical outdoor activity.
Purple Very Unhealthy	Everyone should avoid prolonged or heavy exertion.
Dark Purple Hazardous	Everyone should avoid any outdoor activity.

***Disclaimer:** This forecast is based on fine particulates only; ozone is not included. Forecasts may be wrong; use at own risk. Use caution as conditions can change quickly. See your health professional as needed. Smoke sensitive groups should take appropriate precautions.

Additional Links

AirNow Fire and Smoke Map -- <https://fire.airnow.gov/v4beta/#6.86/44.929/-115.251>



Issued by Interagency Wildland Fire Air Quality Response Program -- www.wildlandfiresmoke.net

Central Mountains Updates -- <https://outlooks.wildlandfiresmoke.net/outlook/d60d6285>

*Smoke and Health Info -- www.airnow.gov/air-quality-and-health/fires-and-your-health