



Smoke Outlook

Central Mountains West Mountain Fires

9/08 - 9/09

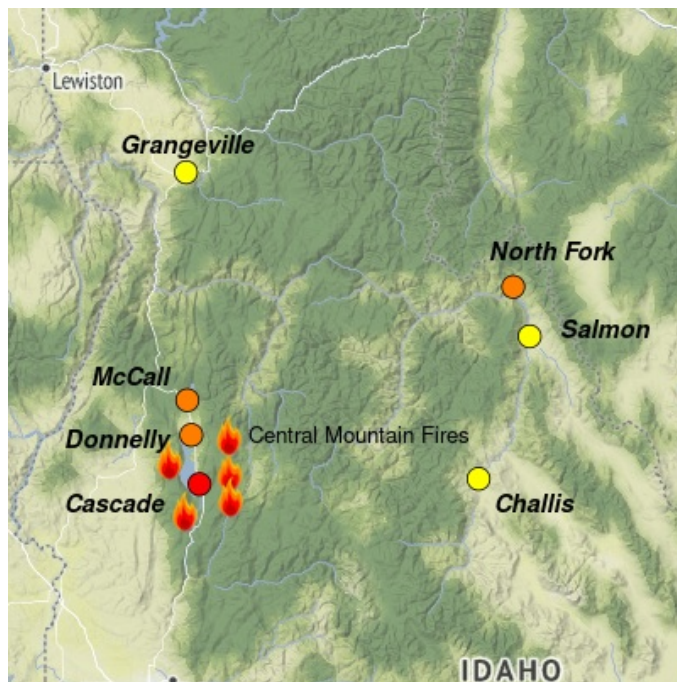
Issued by Wildland Fire Air Quality Response Program on September 08, 2024 at 08:11 AM MDT

Fire

High winds align with steep slopes to create Active fire behavior today. Firefighters can expect uphill runs, long flame lengths, group tree torching, and long-distance spotting. Additional information can be found at [West Mountain Fires Inciweb](#)

Smoke

Gusty winds today may help scour smoke from the Long Valley, but may also move smoke into the area from adjacent wildfires. On Sunday, MODERATE to USG air quality is expected in the Long Valley overall. Thunderstorm winds add complexity to this outlook. See here for more detailed information on Salmon and Challis: [Central Idaho Smoke Outlook](#).



Daily AQI Forecast* for Sunday

Station	Yesterday	Sat 9/07	Comment for Today -- Sun, Sep 08	Forecast*	
	hourly			Sun 9/08	Mon 9/09
Salmon	6a noon 6p	Yellow	MODERATE conditions, some hours of GOOD in afternoon.	Yellow	Yellow
Challis	No hourly data	Yellow	MODERATE conditions, some hours of GOOD in afternoon.	Yellow	Yellow
Grangeville		Yellow	MODERATE and USG AQ expected Sunday.	Yellow	Yellow
McCall		Yellow	USG air quality today	Orange	Yellow
North Fork		Orange	Overall UNHEALTHY AQ with periods of USG AQ expected on Sunday.	Orange	Orange
Donnelly		Yellow	Expect MODERATE and USG air quality on Sunday.	Orange	Orange
Cascade		Red	UNHEALTHY and USG AQ expected on Sunday.	Red	Red

Issued Sep 08, 2024 by Tod Johnson (thattodj@gmail.com)

Air Quality Index (AQI)	Actions to Protect Yourself
Green Good	None
Yellow Moderate	Unusually sensitive individuals should consider limiting prolonged or heavy exertion.
Orange USG	People within Sensitive Groups* should reduce prolonged or heavy outdoor exertion.
Red Unhealthy	People within Sensitive Groups* should avoid all physical outdoor activity.
Purple Very Unhealthy	Everyone should avoid prolonged or heavy exertion.
Dark Red Hazardous	Everyone should avoid any outdoor activity.

***Disclaimer:** This forecast is based on fine particulates only; ozone is not included. Forecasts may be wrong; use at own risk. Use caution as conditions can change quickly. See your health professional as needed. Smoke sensitive groups should take appropriate precautions.

Additional Links

AirNow Fire and Smoke Map -- <https://fire.airnow.gov/v4beta/#6.86/44.929/-115.251>



Issued by Interagency Wildland Fire Air Quality Response Program -- www.wildlandfiresmoke.net

Central Mountains Updates -- <https://outlooks.wildlandfiresmoke.net/outlook/d60d6285>

*Smoke and Health Info -- www.airnow.gov/air-quality-and-health/fires-and-your-health