

CONTINENTAL DIVIDE TRAIL REROUTE

SEPTEMBER 3, 2024

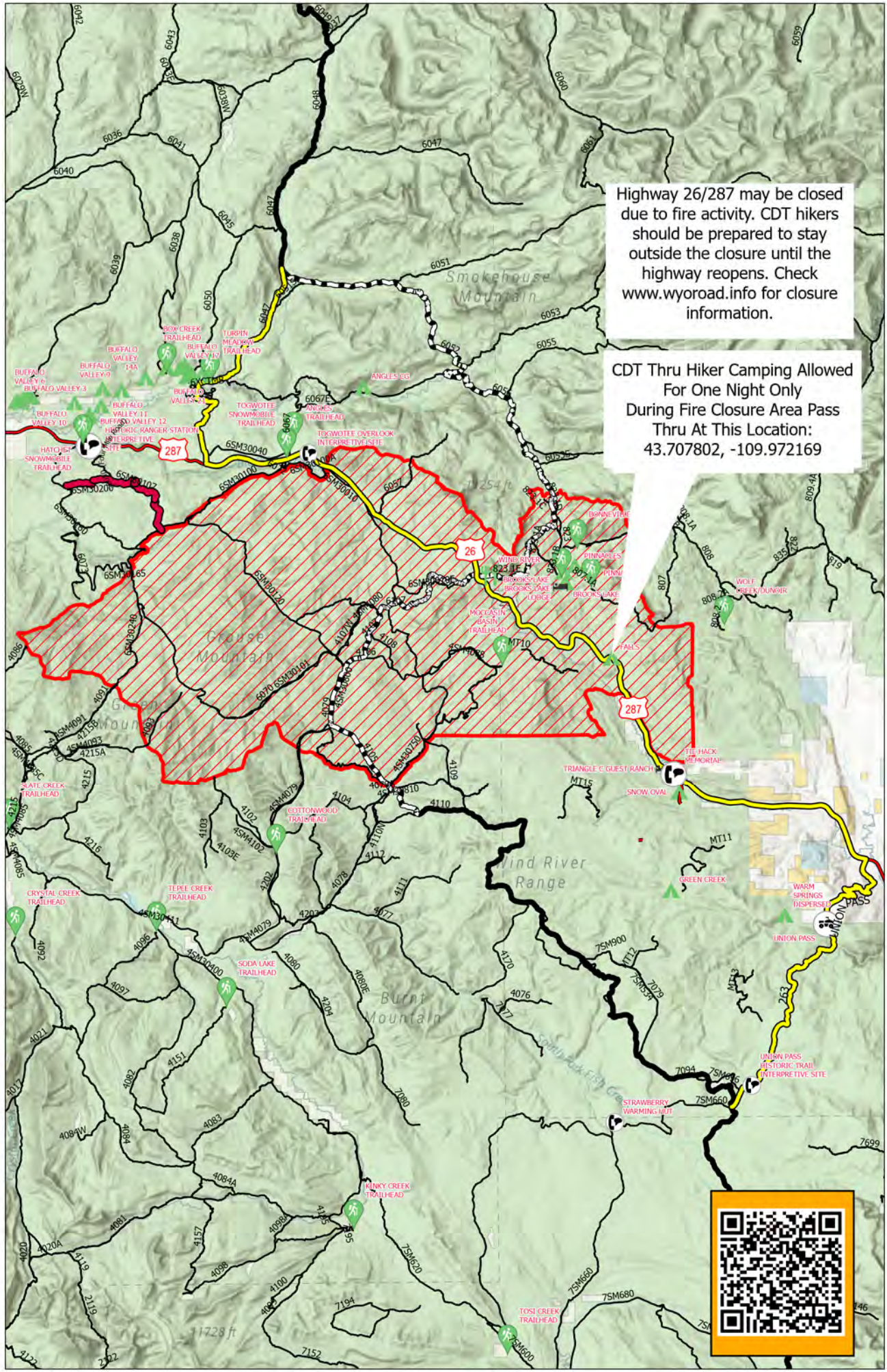


- CDT Reroute Trail Segment
- CDT Closed Trail Segment
- Continental Divide Trail
- Road Closure
- Fire Closure
- Campground
- Camping Area
- Hotel, Lodge, Resort
- Interpretive Site
- Interpretive Visitor Center
- OHV Staging Area
- PICNIC SITE
- Trailhead
- Primary Highway
- Bureau of Land Management
- Local Government
- State
- US Forest Service (USFS)
- Private



0 1 2
Miles

1:305,000 | NRT1 | 9/3/2024 1518
Acres from IR
North American 1983 Datum.
Lat/Long Grid



Highway 26/287 may be closed due to fire activity. CDT hikers should be prepared to stay outside the closure until the highway reopens. Check www.wyroad.info for closure information.

CDT Thru Hiker Camping Allowed For One Night Only During Fire Closure Area Pass Thru At This Location: 43.707802, -109.972169

