

PIO

Lava
ID-BOF0001080
09/15/2024 Day

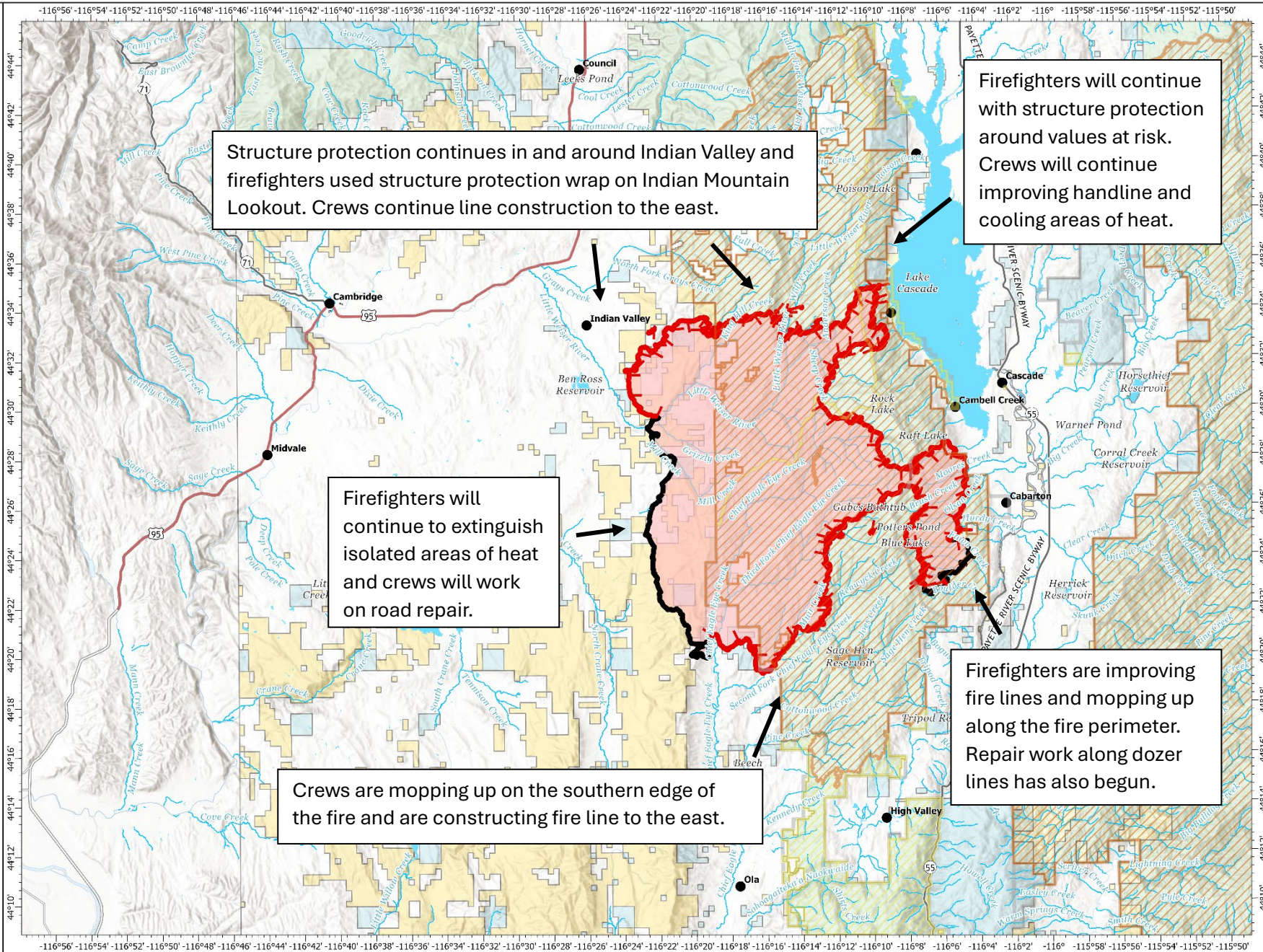
95,697 acres at 9/13/2024 @ 22:15 hrs

- Closed Route
- Closed Area
- Restricted Area
- Boise NF District Boundary
- Communities
- Contained
- Uncontained
- Wildfire Daily Fire Perimeter
- Secondary Hwy
- Local Connector
- Perennial Stream
- Perennial Lake
- Nonearthen Reservoir
- Bureau of Land Management (BLM)
- Bureau of Reclamation (BOR)
- State
- US Forest Service (USFS)
- Private
- Undetermined



0 3 6 Miles

S Red GIS 9/14/2024 2059
IR & GPS
North American 1983 Datum, Lat/Long Grid



Structure protection continues in and around Indian Valley and firefighters used structure protection wrap on Indian Mountain Lookout. Crews continue line construction to the east.

Firefighters will continue with structure protection around values at risk. Crews will continue improving handline and cooling areas of heat.

Firefighters will continue to extinguish isolated areas of heat and crews will work on road repair.

Firefighters are improving fire lines and mopping up along the fire perimeter. Repair work along dozer lines has also begun.

Crews are mopping up on the southern edge of the fire and are constructing fire line to the east.