



Smoke Outlook

Central Idaho

9/07 - 9/08

Issued by Wildland Fire Air Quality Response Program on September 07, 2024 at 07:58 AM MDT

Special Statement

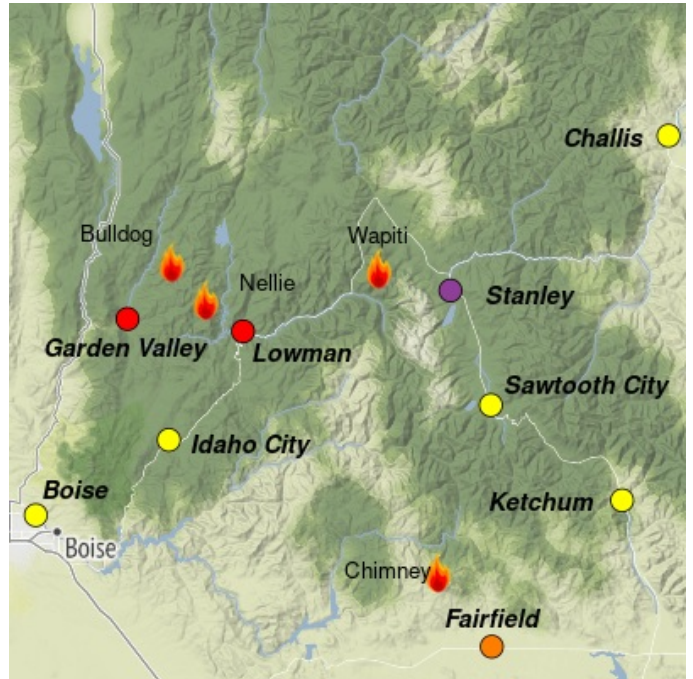
AIR QUALITY ADVISORIES in effect. See [Idaho DEQ](#) for current status.

Fire

The **Wapiti Fire** is at 112,321 acres and the **Middle Fork Complex** is at 58,082 acres. There are several other active fires in the Central Idaho mountains. Firefighters continue to make progress towards accomplishing objectives. See inciweb.wildfire.gov for updates on specific incidents.

Smoke

Continued haze in the Treasure valley, with noticeable smoke trapped under a strong morning inversion in the mountains. Boise and Ketchum should remain in the MODERATE category. Garden Valley and Lowman can expect UNHEALTHY air quality, with smoke to increase until midday and thin out after the inversion lifts. Significant smoke impacts continue for Stanley, afternoon will be the best time of day there, with a few hours of MODERATE.



Daily AQI Forecast* for Saturday

Station	Yesterday	Fri 9/06	Comment for Today -- Sat, Sep 07	Forecast*	
	hourly			Sat 9/07	Sun 9/08
Stanley			Thick smoke most of the day; a few hours of relief in afternoon.		
Ketchum			MODERATE conditions today.		
Challis	No hourly data		Smoke peaks in the midday hours.		
Boise			Haze, light smoke at midday.		
Idaho City			Smoke builds slowly through late morning, lifting after noon.		
Garden Valley			Smoke peaks in the midday hours.		
Sawtooth City	No hourly data		MODERATE conditions today.		
Lowman			UNHEALTHY overall; VERY UNHEALTHY at midday		
Fairfield	No hourly data		MODERATE conditions most of the day.		

Issued Sep 07, 2024 by Paul Corrigan ARA (paul.corrigan@usda.gov)

Air Quality Index (AQI)	Actions to Protect Yourself
Good	None
Moderate	Unusually sensitive individuals should consider limiting prolonged or heavy exertion.
USG	People within Sensitive Groups* should reduce prolonged or heavy outdoor exertion.
Unhealthy	People within Sensitive Groups* should avoid all physical outdoor activity.
Very Unhealthy	Everyone should avoid prolonged or heavy exertion.
Hazardous	Everyone should avoid any outdoor activity.

*Disclaimer: This forecast is based on fine particulates only; ozone is not included. Forecasts may be wrong; use at own risk. Use caution as conditions can change quickly. See your health professional as needed. Smoke sensitive groups should take appropriate precautions.

Additional Links

[Middle Fork Complex \(Bulldog, Nellie\)](#) -- <https://inciweb.wildfire.gov/incident-information/idbof-middle-fork-complex-fire-bulldog-nellie-anderson>

[Wapiti Fire](#) -- <https://inciweb.wildfire.gov/incident-information/idbof-wapiti-fire>

[Chimney Fire](#) -- <https://inciweb.wildfire.gov/incident-information/ideix-chimney-fire>

[IDEQ Smoke Blog](#) -- <https://idsmoke.blogspot.com/>



Issued by Interagency Wildland Fire Air Quality Response Program -- www.wildlandfiresmoke.net

Central Idaho Updates -- <https://outlooks.wildlandfiresmoke.net/outlook/d58217e9>

*Smoke and Health Info -- www.airnow.gov/air-quality-and-health/fires-and-your-health