



Smoke Outlook

Central Mountains West Mountain Fires

9/11 - 9/12

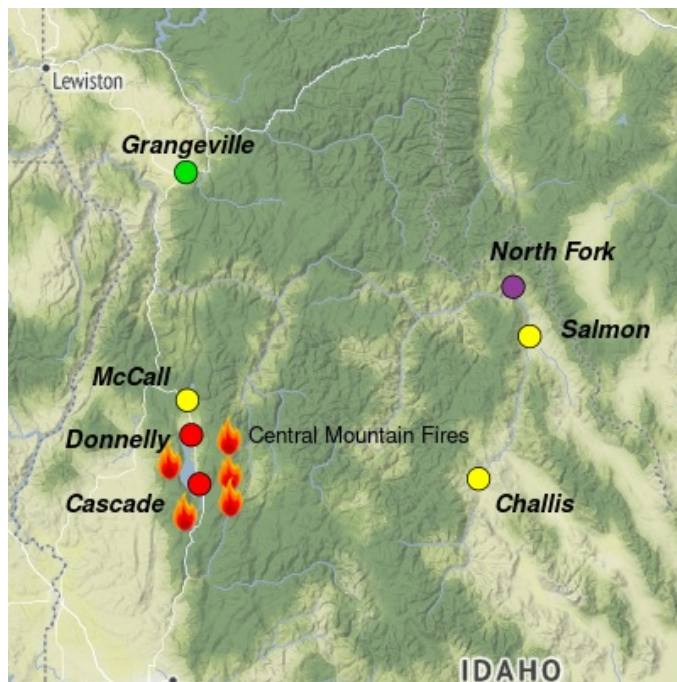
Issued by Wildland Fire Air Quality Response Program on September 11, 2024 at 08:16 AM MDT

Fire

Cloudy skies, cool temperatures, and high humidity will temper fire behavior today. Expect low-intensity fire behavior characterized by creeping and smoldering with occasional single tree torching. Shifting winds throughout the day will adjust the fire spread direction. Additional information can be found at [West Mountain Fires Inciweb](#).

Smoke

All areas of Long Valley should expect improved air quality as West-Northwest winds begin to clear smoke from the area, especially in the evening hours. Air quality will improve for the Outlook area tomorrow due to cooler weather and precipitation. See here for more detailed information on Salmon and Challis: [Central Idaho Smoke Outlook](#).



Daily AQI Forecast* for Wednesday

Station	Yesterday			Tue 9/10	Comment for Today -- Wed, Sep 11	Forecast*	
	hourly					Wed 9/11	Thu 9/12
Salmon	6a noon 6p			●	UNHEALTHY to start, much better by evening.	●	●
Challis	No hourly data			●	MODERATE overall, smoke should be gone tonight.	●	●
Grangeville				●	GOOD air quality expected on Wednesday.	●	●
McCall				●	Improved air quality today with levels at USG	●	●
North Fork				●	Overall VERY UNHEALTHY air quality for the day.	●	●
Donnelly				●	Expect UNHEALTHY air quality for the day.	●	●
Cascade				●	Air quality improves with the onset of unsettled weather.	●	●

Issued Sep 11, 2024 by Jacob Deal ARAt (jacob.deal@usda.gov)

Air Quality Index (AQI)	Actions to Protect Yourself
● Good	None
● Moderate	Unusually sensitive individuals should consider limiting prolonged or heavy exertion.
● USG	People within Sensitive Groups* should reduce prolonged or heavy outdoor exertion.
● Unhealthy	People within Sensitive Groups* should avoid all physical outdoor activity.
● Very Unhealthy	Everyone should avoid prolonged or heavy exertion.
● Hazardous	Everyone should avoid any outdoor activity.

***Disclaimer:** This forecast is based on fine particulates only; ozone is not included. Forecasts may be wrong; use at own risk. Use caution as conditions can change quickly. See your health professional as needed. Smoke sensitive groups should take appropriate precautions.

Additional Links

AirNow Fire and Smoke Map -- <https://fire.airnow.gov/v4beta/#6.86/44.929/-115.251>



Issued by Interagency Wildland Fire Air Quality Response Program -- www.wildlandfiresmoke.net

Central Mountains Updates -- <https://outlooks.wildlandfiresmoke.net/outlook/d60d6285>

*Smoke and Health Info -- www.airnow.gov/air-quality-and-health/fires-and-your-health