

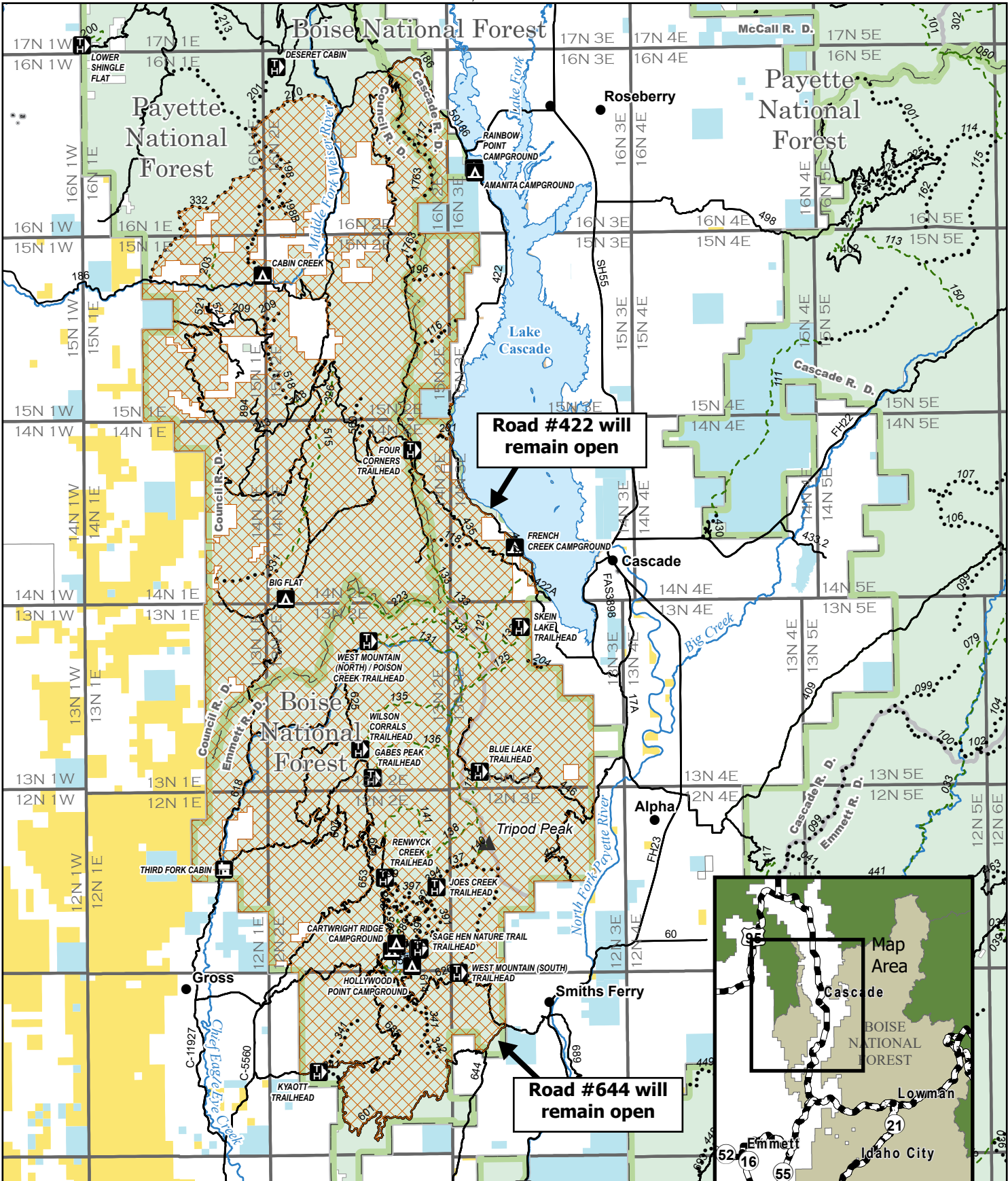


# Boise and Payette National Forests

Emmett, Cascade, and Council Ranger Districts  
Lava and Boulder Fire Closure

Order Number - 0402-06-63, Exhibit A

The U.S. Department of Agriculture, Forest Service uses the most current and complete data available. GIS data and product accuracy may vary. They may be developed from sources of differing accuracy, accurate only at certain scales, based on modeling or interpretation, incomplete while being revised or created, etc. Using GIS products for purposes other than those for which they were created, may yield inaccurate or misleading results.



Road #422 will remain open

Road #644 will remain open

Described Area	Roads	Lake/Reservoir	BLM
Cabin/Lookout	Motorized Trail	Forest Boundary	Other Federal
Campground	Non-Motorized Trail	Ranger District Boundary	State
Trailhead	River		Private
Summits			FS Ownership

0 3 6 Miles

