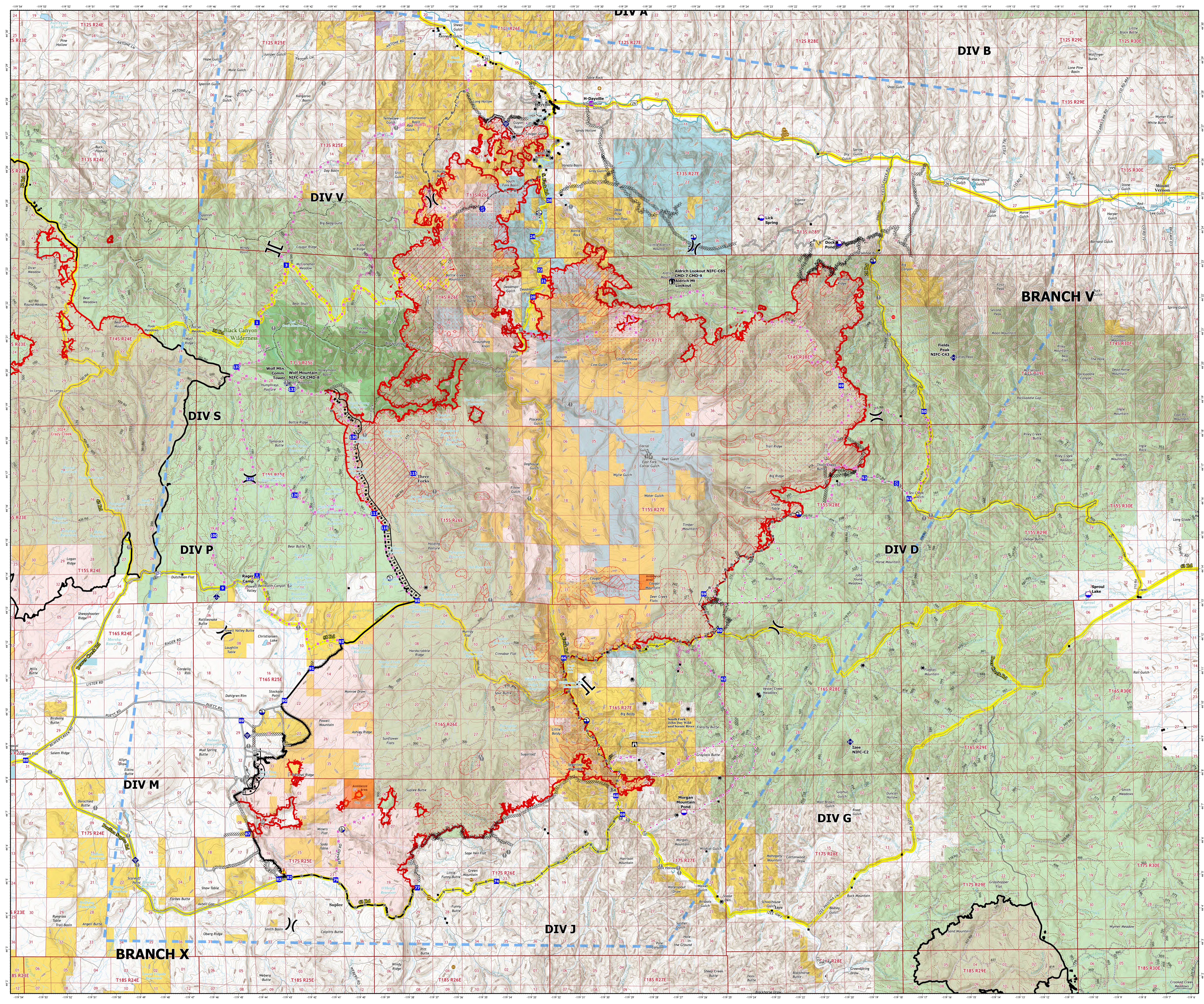


Operations Map

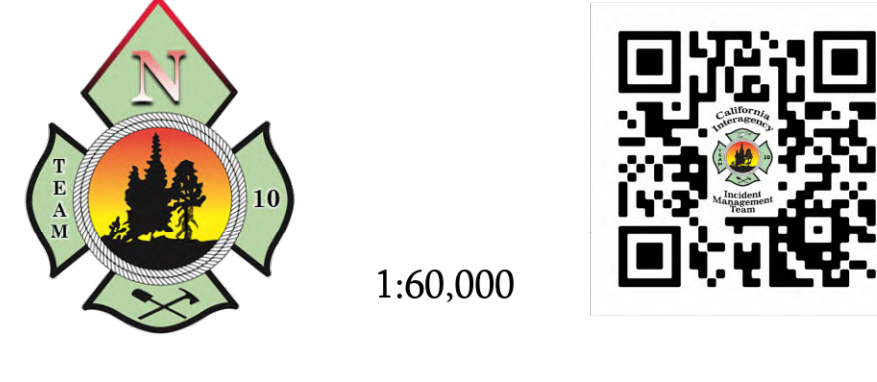
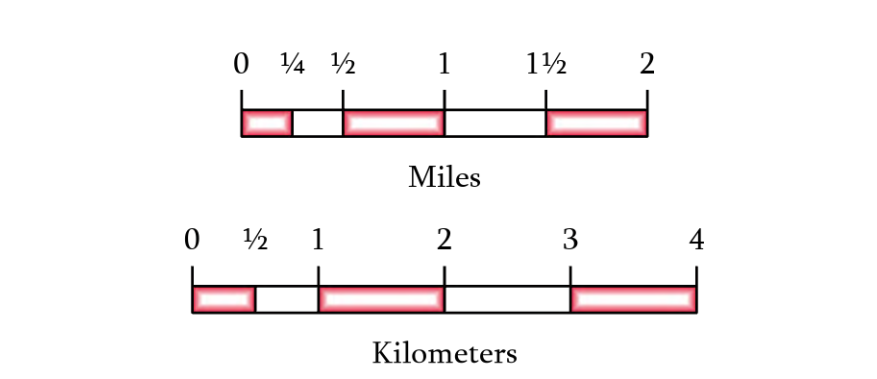
Rail Ridge Fire

OR-PRD-000761

September 11, 2024
161,675 Acres on 9/9/2024 | 21:10



- Structures
- Helipad
- Division Break
- Branch Break
- Drop Point
- Camp
- Staging Area
- Lookout
- Hot Spot - Spot Fire
- Value at Risk
- Gate
- Mobile Weather Unit
- Internet Access
- Repeater
- Safety Zone
- Hazard
- Dip Site
- Draft Site
- Pump
- Water Tank
- Lightning Strikes (Last 72 Hours)
- 0-1 N
- 48-72 N
- 48-72 P
- Completed Burnout
- Completed Dozer Line
- Completed Hand Line
- Completed Road as Line
- Planned Dozer Line
- Planned Road as Line
- Proposed Line
- Access Line
- Temporary Flight Restriction
- Contained
- Uncontained
- IR Intense Heat
- IR Scattered Heat
- Wildfire Daily Fire Perimeter
- Avoidance Areas
- Secondary Hwy
- Local Connector
- Local Road
- Trail
- Paved Road
- Gravel Road, Suitable for Passenger Car
- Road, Not Maintained for Passenger Car
- National Forest System Roads closed to motorized uses
- National Forest System Roads closed to motorized uses
- Ownership
- Bureau of Land Management (BLM)
- National Park Service (NPS)
- State
- US Forest Service (USFS)
- Private



1:60,000