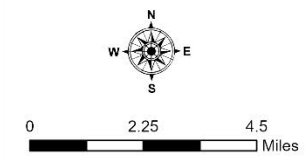


Public Information

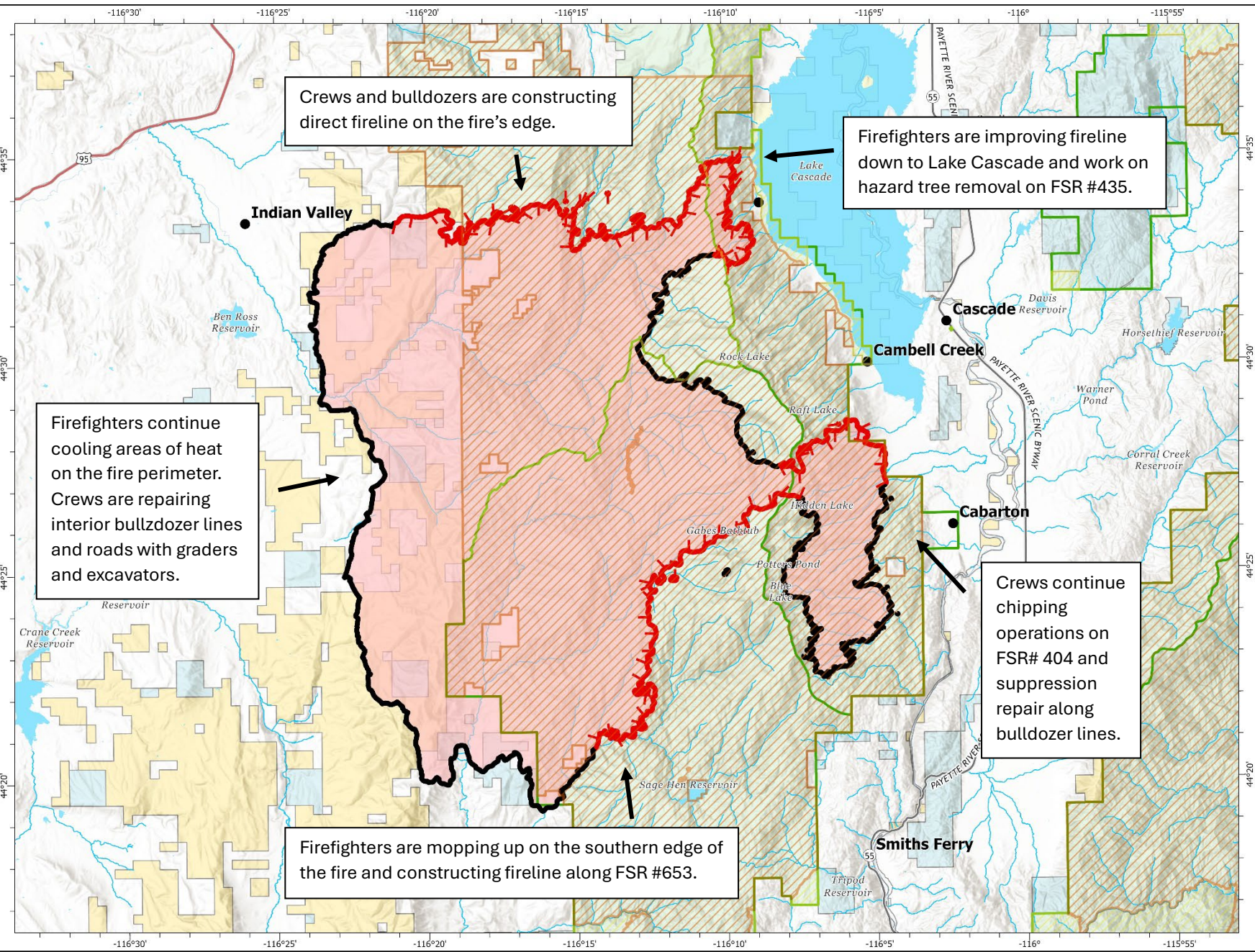
Lava
ID-BOF0001080
09/20/2024 Day

97,980 acres at 9/19/2024 @ 0113 hrs

- Communities
- Closed Route
- Secondary Hwy
- Local Connector
- Stream
- Contained
- Uncontained
- ▨ Closed Area
- ▨ Restricted Area
- Lake
- Reservoir
- Bureau of Land Management (BLM)
- Bureau of Reclamation (BOR)
- State
- US Forest Service (USFS)
- Private
- ▭ Boise NF District Boundary
- ▭ Wildfire Daily Fire Perimeter



S Red GIS 9/19/2024 2125
IR & Satellite
North American 1983 Datum, LatLong Grid



Crews and bulldozers are constructing direct fireline on the fire's edge.

Firefighters are improving fireline down to Lake Cascade and work on hazard tree removal on FSR #435.

Firefighters continue cooling areas of heat on the fire perimeter. Crews are repairing interior bulldozer lines and roads with graders and excavators.

Crews continue chipping operations on FSR# 404 and suppression repair along bulldozer lines.

Firefighters are mopping up on the southern edge of the fire and constructing fireline along FSR #653.