

PIO

Lava
ID-BOF0001080
09/18/2024 Day

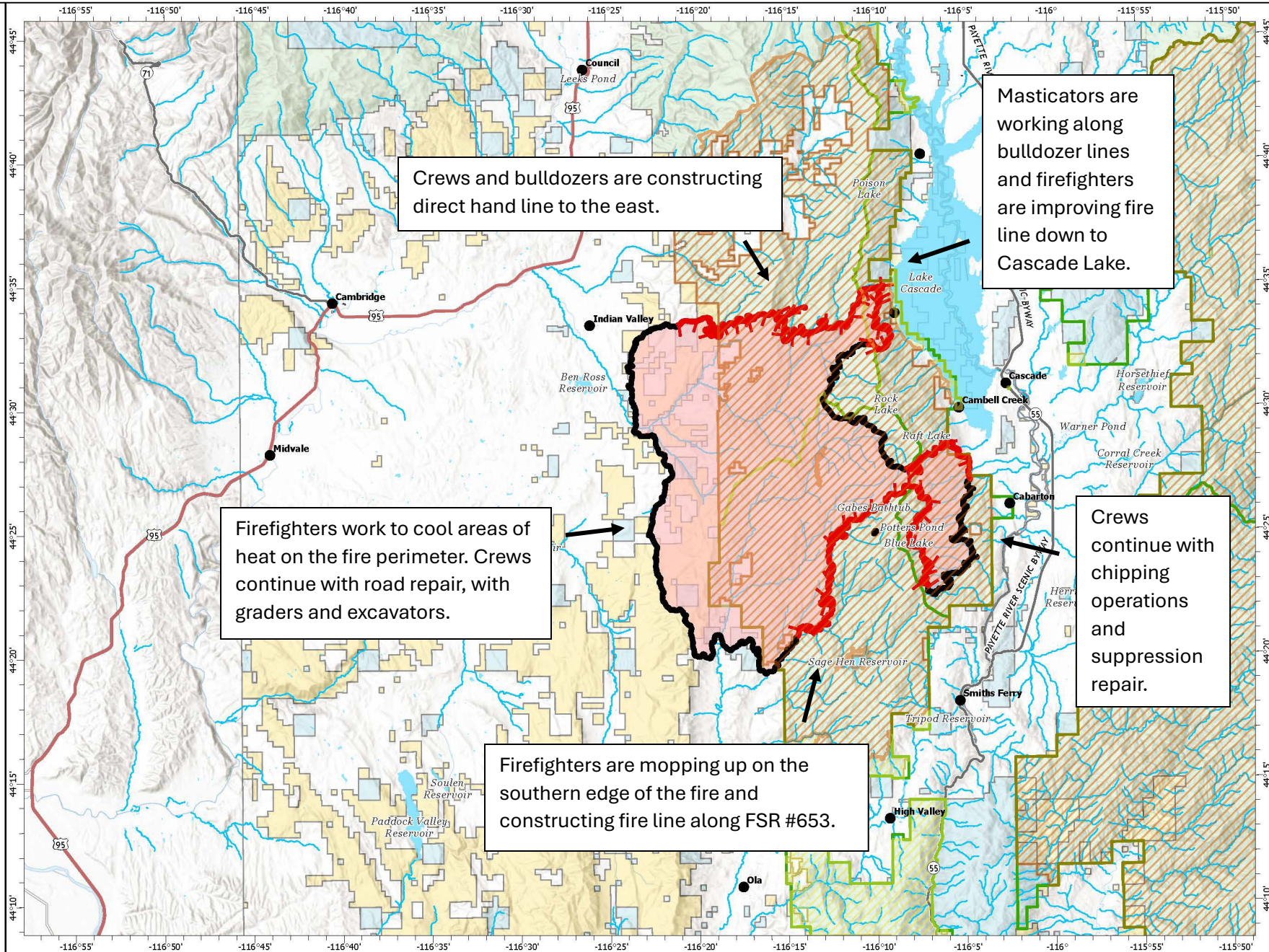
97,973 acres at 9/16/2024 @ 1221 hrs

- Communities
- Closed Route
- Secondary Hwy
- Local Connector
- Stream
- Contained
- Uncontained
- ▨ Closed Area
- ▨ Restricted Area
- Lake
- Reservoir
- Bureau of Land Management (BLM)
- Bureau of Reclamation (BOR)
- State
- US Forest Service (USFS)
- Private
- Boise NF District Boundary
- Wildfire Daily Fire Perimeter



0 3 6 Miles

S Red GIS 9/17/2024 2038
IR & Satellite
North American 1983 Datum, Lat,Long Grid



Crews and bulldozers are constructing direct hand line to the east.

Firefighters work to cool areas of heat on the fire perimeter. Crews continue with road repair, with graders and excavators.

Masticators are working along bulldozer lines and firefighters are improving fire line down to Cascade Lake.

Crews continue with chipping operations and suppression repair.

Firefighters are mopping up on the southern edge of the fire and constructing fire line along FSR #653.