



Information

9/13/24

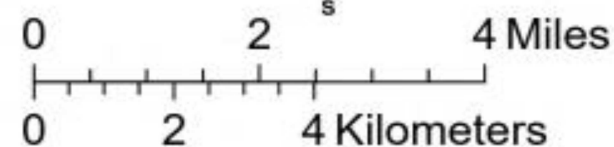
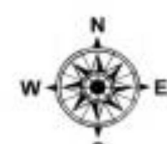
Homestead Complex
OR-UPF-240311

9483 acres at 9/10/2024 at 0044 PDT

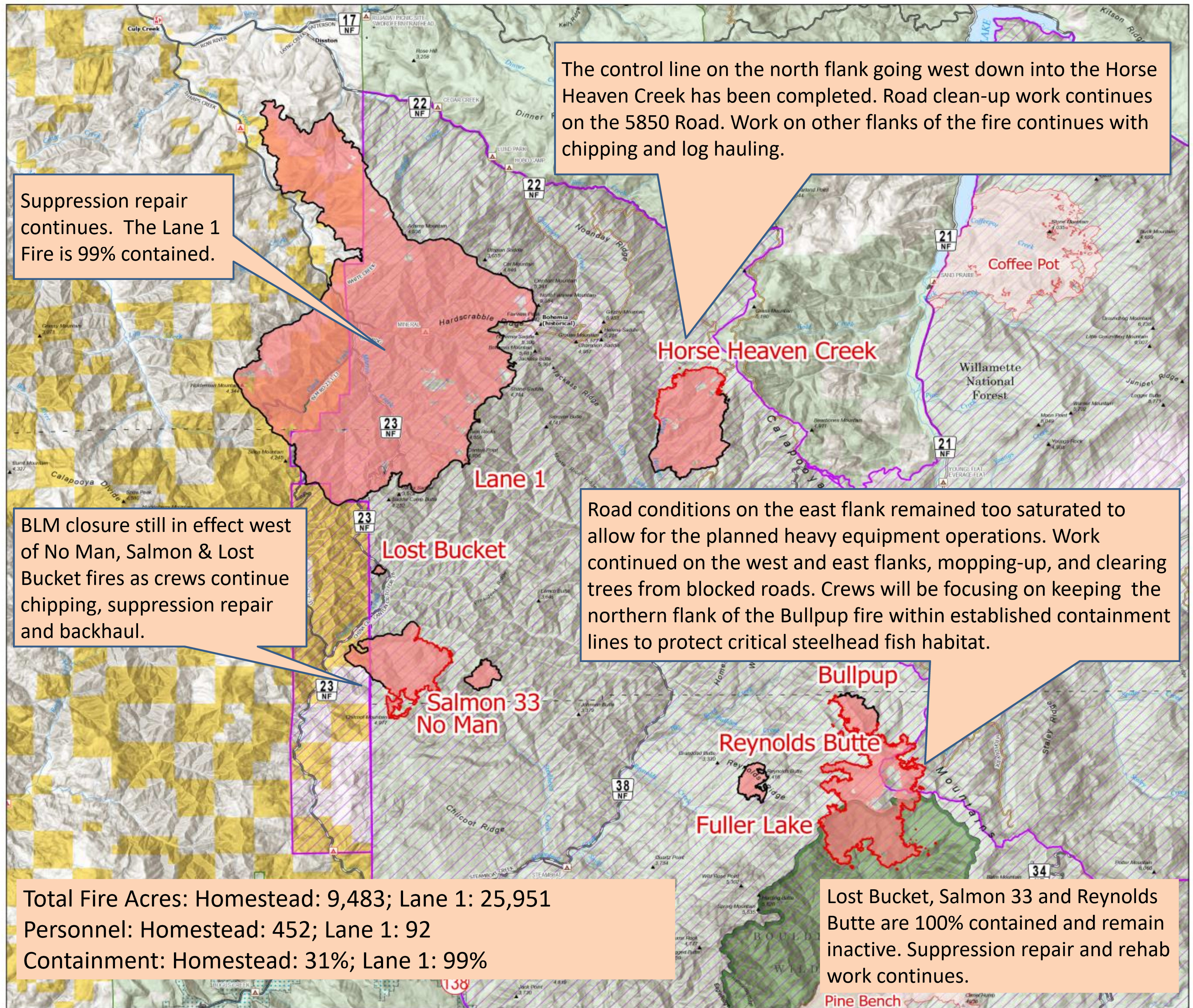
Cottage Grove - Lane 1
OR-771S-000028

25,950 acres at 9/9/2024 at 2228 PDT

- Contained
- Uncontained
- Wildfire Daily Fire Perimeter - Homestead Complex & Lane 1
- Wildfire Daily Fire Perimeter - Adjacent Incidents
- FS Wilderness Boundary
- Bureau of Land Management Lands
- Forest Service Land
- Forest Service Closure Area
- BLM Closure Area
- Road, Paved
- Road, Dirt/Gravel



1:101,852 | NW8 | 9/11/2024 0647
IR Flight
North American 1983 Datum, Lat/Long Grid



Suppression repair continues. The Lane 1 Fire is 99% contained.

The control line on the north flank going west down into the Horse Heaven Creek has been completed. Road clean-up work continues on the 5850 Road. Work on other flanks of the fire continues with chipping and log hauling.

BLM closure still in effect west of No Man, Salmon & Lost Bucket fires as crews continue chipping, suppression repair and backhaul.

Road conditions on the east flank remained too saturated to allow for the planned heavy equipment operations. Work continued on the west and east flanks, mopping-up, and clearing trees from blocked roads. Crews will be focusing on keeping the northern flank of the Bullpup fire within established containment lines to protect critical steelhead fish habitat.

Total Fire Acres: Homestead: 9,483; Lane 1: 25,951
Personnel: Homestead: 452; Lane 1: 92
Containment: Homestead: 31%; Lane 1: 99%

Lost Bucket, Salmon 33 and Reynolds Butte are 100% contained and remain inactive. Suppression repair and rehab work continues.