



Information

9/10/2024

Homestead Complex
OR-UPF-240311

9483 acres at 9/10/2024 at 0044 PDT

Cottage Grove - Lane 1
OR-771S-000028

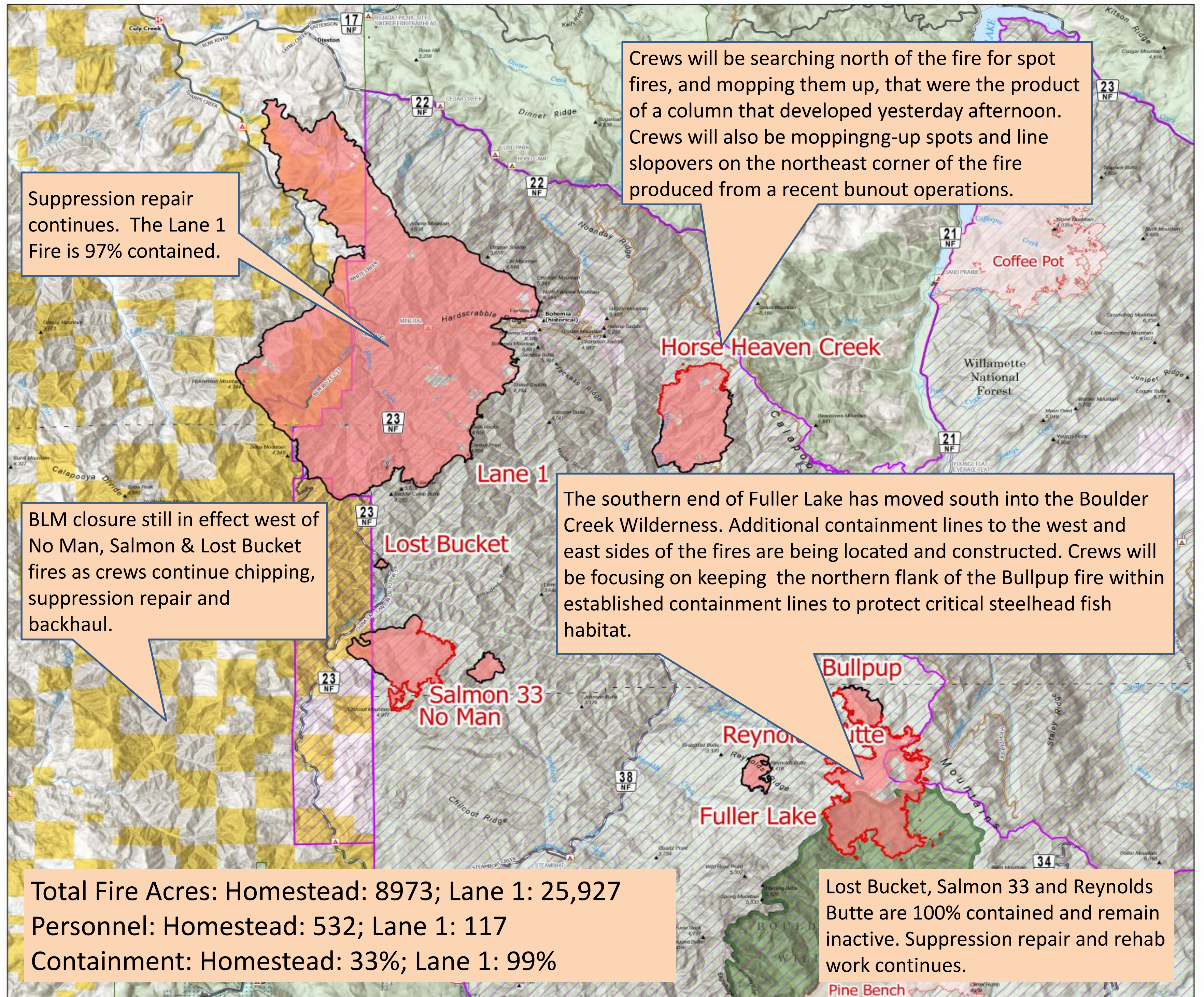
25,950 acres at 9/9/2024 at 2228 PDT

- Contained
- Uncontained
- Wildfire Daily Fire Perimeter - Homestead Complex & Lane 1
- Wildfire Daily Fire Perimeter - Adjacent Incidents
- FS Wilderness Boundary
- Bureau of Land Management Lands
- Forest Service Land
- Forest Service Closure Area
- BLM Closure Area
- Road, Paved
- Road, Dirt/Gravel



0 2 4 Miles
0 2 4 Kilometers

1:101,852 | NW8 | 9/10/2024 0822
IR Flight
North American 1983 Datum, Lat/Long Grid



Suppression repair continues. The Lane 1 Fire is 97% contained.

Crews will be searching north of the fire for spot fires, and mopping them up, that were the product of a column that developed yesterday afternoon. Crews will also be moppingng-up spots and line slopovers on the northeast corner of the fire produced from a recent bunout operations.

BLM closure still in effect west of No Man, Salmon & Lost Bucket fires as crews continue chipping, suppression repair and backhaul.

The southern end of Fuller Lake has moved south into the Boulder Creek Wilderness. Additional containment lines to the west and east sides of the fires are being located and constructed. Crews will be focusing on keeping the northern flank of the Bullpup fire within established containment lines to protect critical steelhead fish habitat.

Total Fire Acres: Homestead: 8973; Lane 1: 25,927
Personnel: Homestead: 532; Lane 1: 117
Containment: Homestead: 33%; Lane 1: 99%

Lost Bucket, Salmon 33 and Reynolds Butte are 100% contained and remain inactive. Suppression repair and rehab work continues.