



# Information

9/7/2024

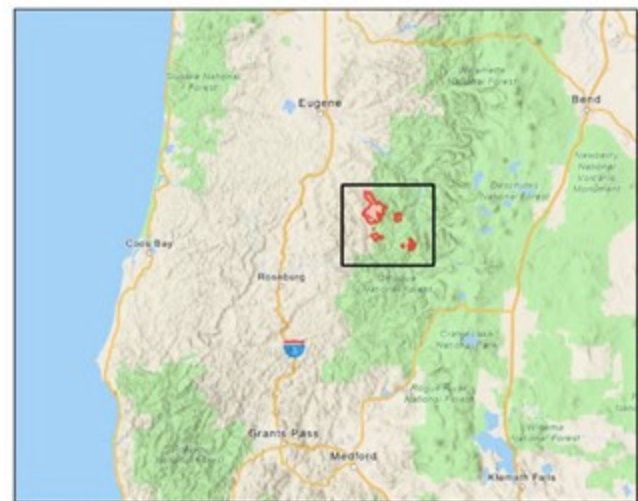
Homestead Complex  
OR-UPF-240311

7672 acres at 9/07/2024 @ 0232 PDT

Cottage Grove - Lane 1  
OR-771S-000028

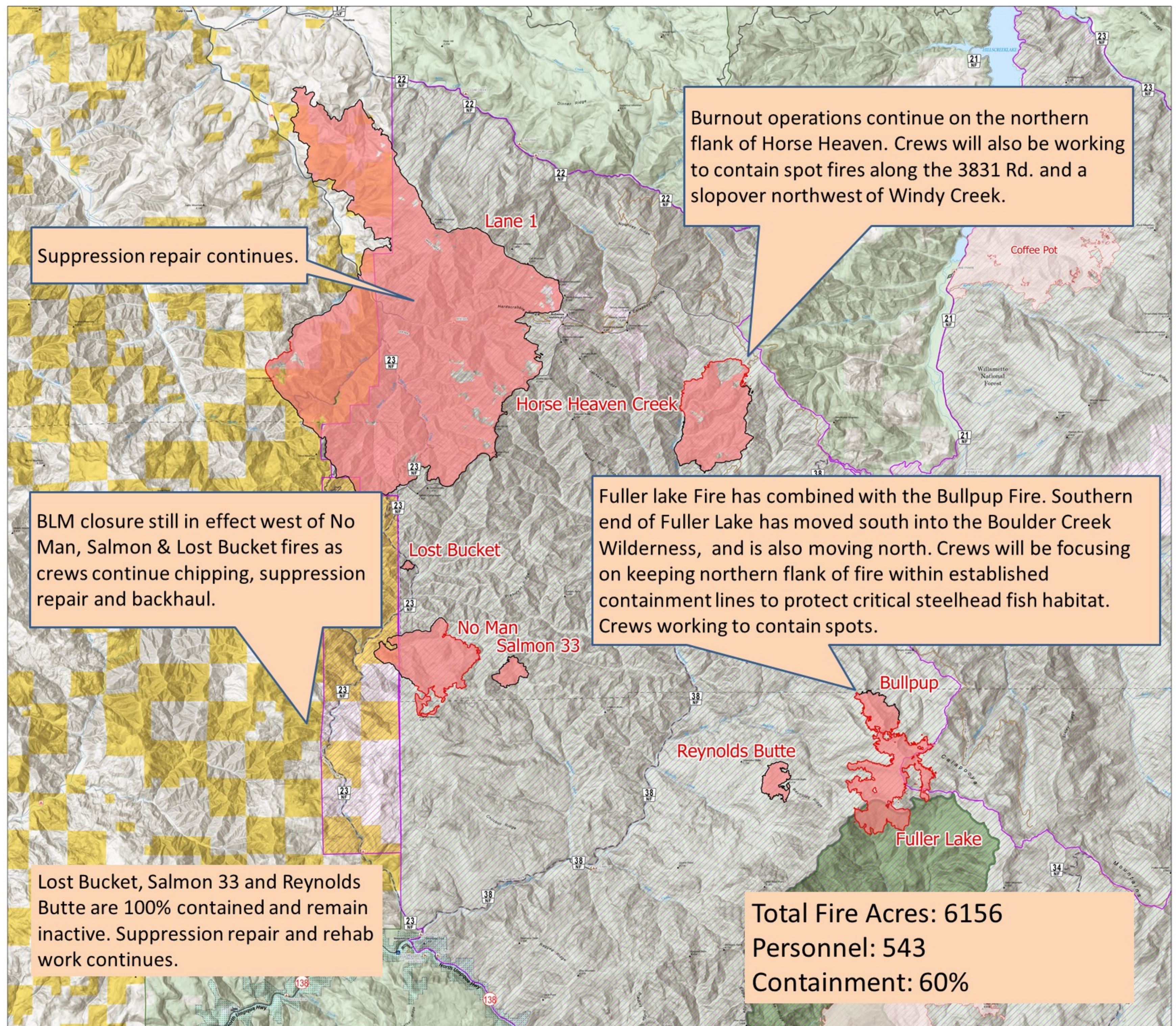
25,884 acres at 9/7/2024 at 0217 PDT

- Contained
- Uncontained
- Wildfire Daily Fire Perimeter - Homestead Complex;
- Wildfire Daily Fire Perimeter - Adjacent Incidents
- FS Wilderness Boundary
- Bureau of Land Management Lands
- Forest Service Land
- Forest Service Closure Area
- BLM Closure Area
- Road, Paved
- Road, Dirt/Gravel



0 2 4 Miles  
0 2 4 Kilometers

1:50,926 | NW8 | 9/7/2024 0734  
IR Flight  
North American 1983 Datum, Lat,Long Grid



Suppression repair continues.

Burnout operations continue on the northern flank of Horse Heaven. Crews will also be working to contain spot fires along the 3831 Rd. and a slopover northwest of Windy Creek.

BLM closure still in effect west of No Man, Salmon & Lost Bucket fires as crews continue chipping, suppression repair and backhaul.

Fuller lake Fire has combined with the Bullpup Fire. Southern end of Fuller Lake has moved south into the Boulder Creek Wilderness, and is also moving north. Crews will be focusing on keeping northern flank of fire within established containment lines to protect critical steelhead fish habitat. Crews working to contain spots.

Lost Bucket, Salmon 33 and Reynolds Butte are 100% contained and remain inactive. Suppression repair and rehab work continues.

Total Fire Acres: 6156  
Personnel: 543  
Containment: 60%