

Lava Fire Map for 9/29/2024

Public Information

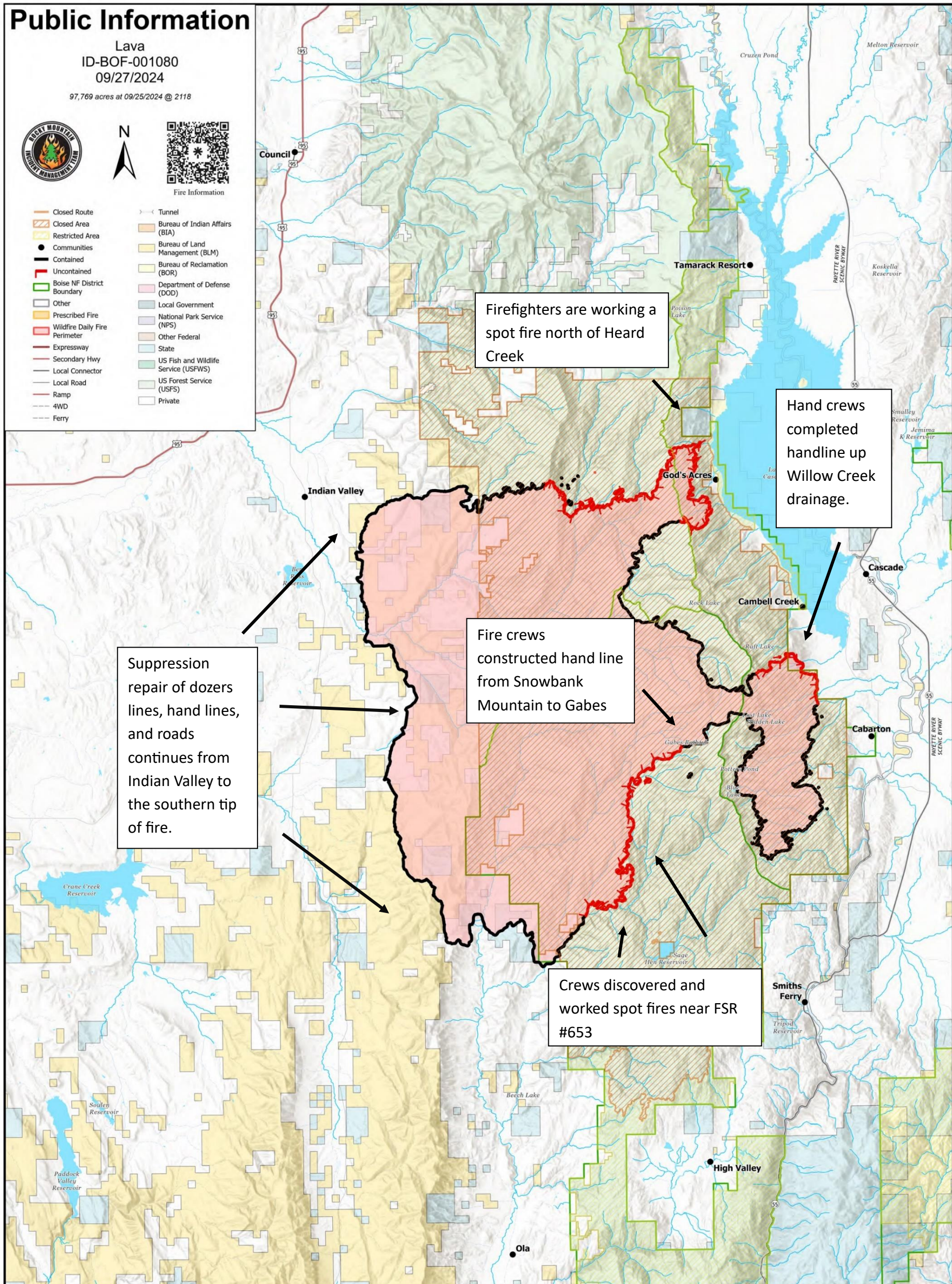
Lava
ID-BOF-001080
09/27/2024

97,769 acres at 09/25/2024 @ 2118



Fire Information

- | | |
|--|---|
| <ul style="list-style-type: none"> — Closed Route — Closed Area — Restricted Area ● Communities — Contained — Uncontained — Boise NF District Boundary — Other — Prescribed Fire — Wildfire Daily Fire Perimeter — Expressway — Secondary Hwy — Local Connector — Local Road — Ramp — 4WD — Ferry | <ul style="list-style-type: none"> — Tunnel — Bureau of Indian Affairs (BIA) — Bureau of Land Management (BLM) — Bureau of Reclamation (BOR) — Department of Defense (DOD) — Local Government — National Park Service (NPS) — Other Federal — State — US Fish and Wildlife Service (USFWS) — US Forest Service (USFS) — Private |
|--|---|



Firefighters are working a spot fire north of Heard Creek

Hand crews completed handline up Willow Creek drainage.

Suppression repair of dozers lines, hand lines, and roads continues from Indian Valley to the southern tip of fire.

Fire crews constructed hand line from Snowbank Mountain to Gabes

Crews discovered and worked spot fires near FSR #653

Incident Statistics: 97,669 acres, 68% contained, 452 people
Fire Information phone: (208) 780-5003 **Hours:** 7:00 a.m. to 7:00 p.m. **Email:** 2024.Lava@firenet.gov
Facebook: @LavaFire **Inciweb:** inciweb.wildfire.gov/incident-information/idbof-lava-fire