

R. 6 E.

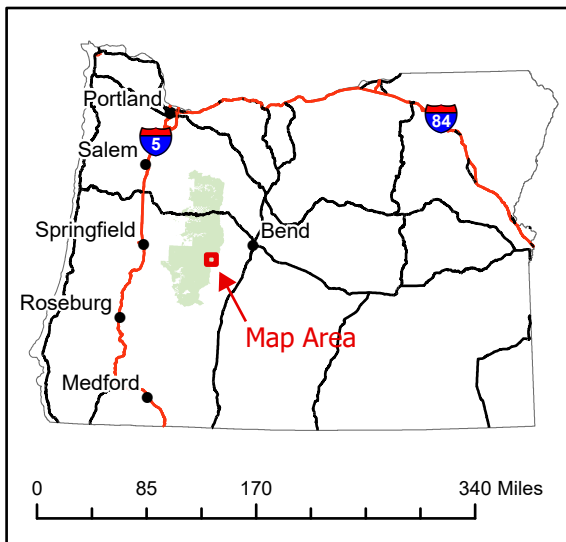
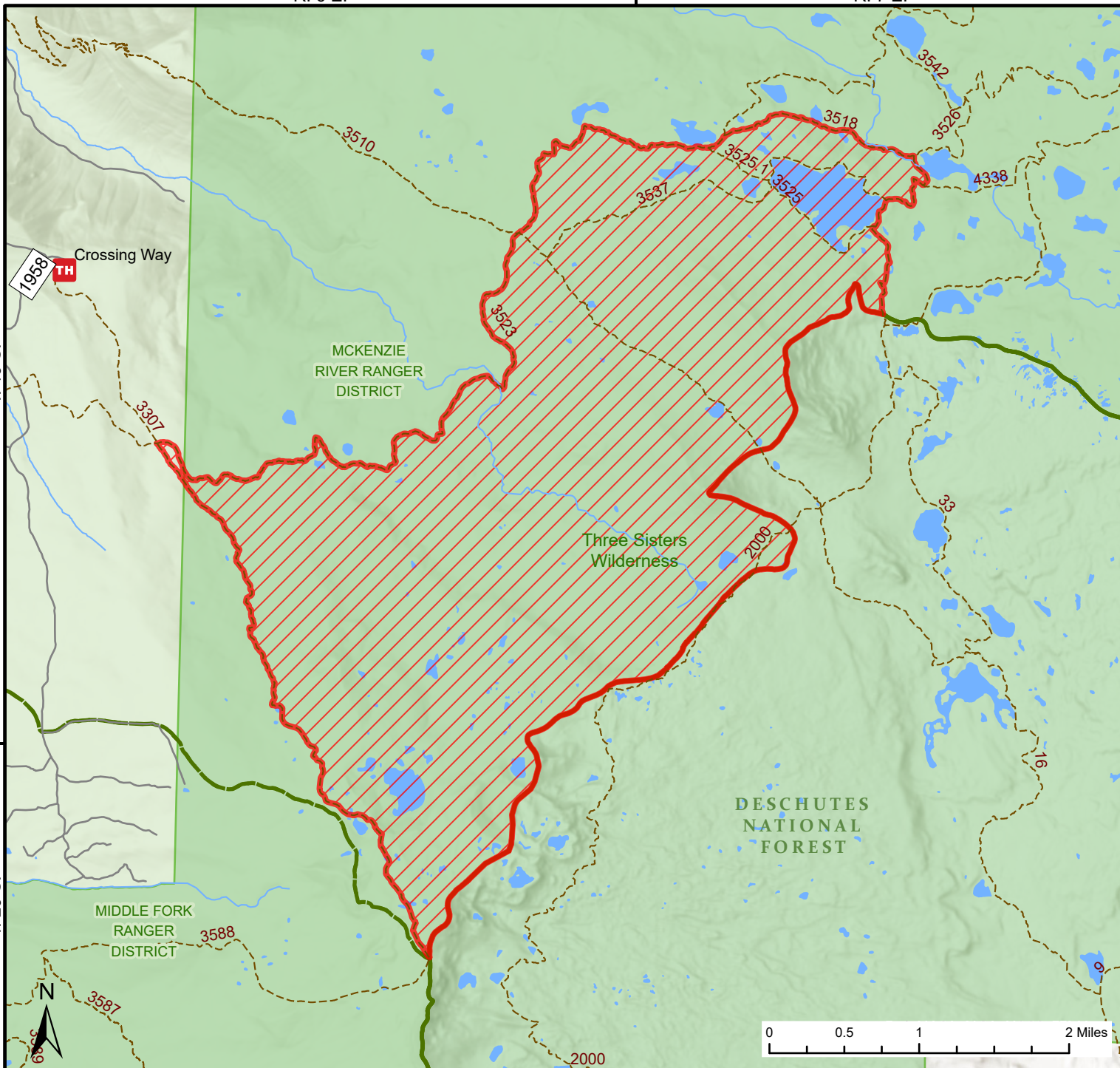
R. 7 E.

T. 19 S.









T. 19 S.

T. 20 S.

T. 20 S.



374 Fire Closure Exhibit A
Closure Number 06-18-01-24-43
Willamette National Forest 541-225-6300

-  Trails
-  Roads Suitable for Passenger Cars
-  High Clearance Vehicles
-  Area Closure
-  Ranger District Boundary
-  USFS Admin Boundary
-  Wilderness
-  National Forest Land

