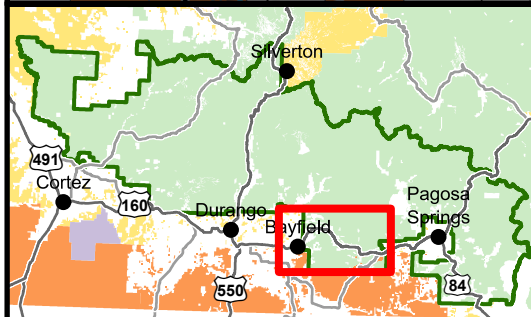
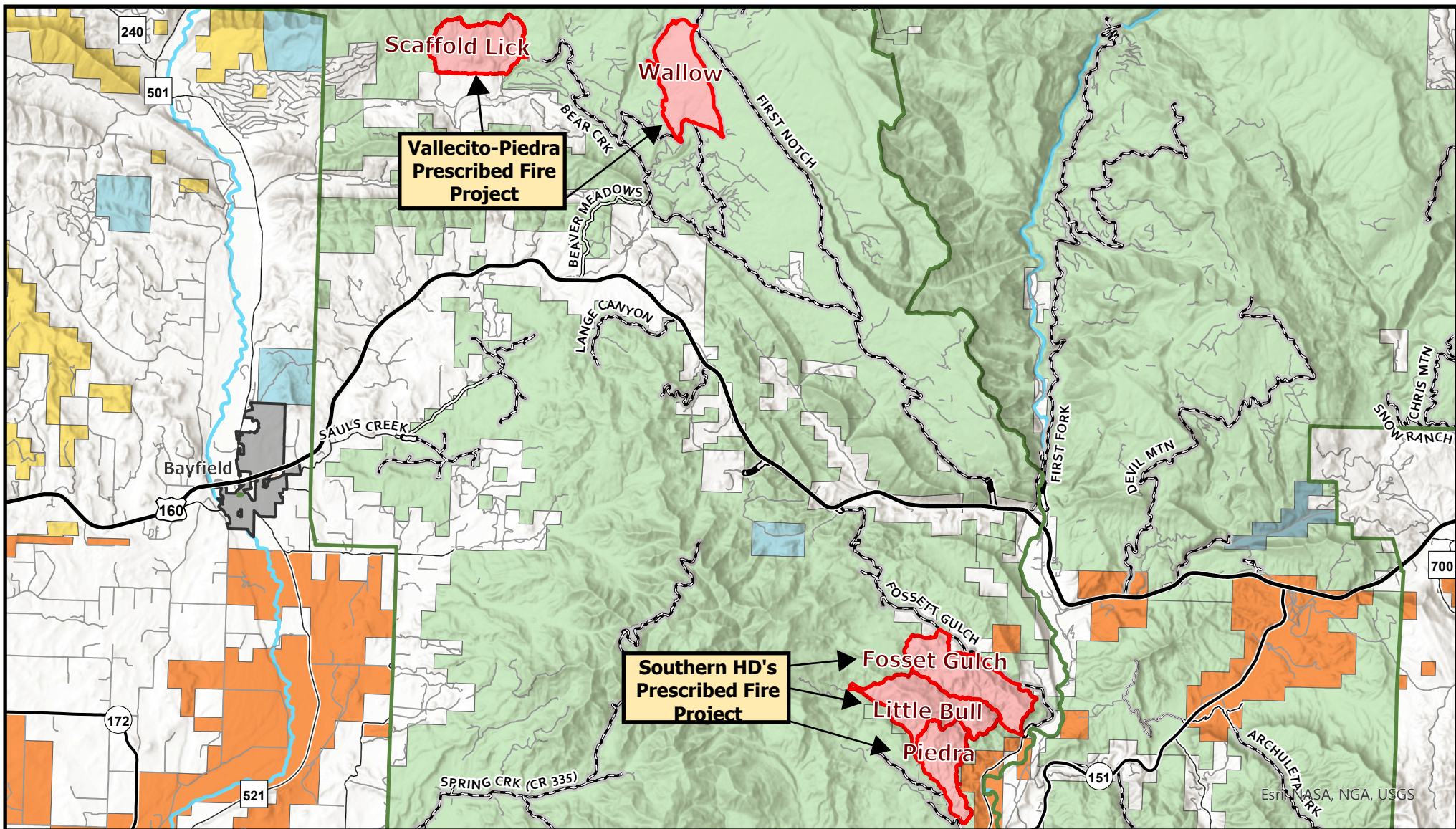


Columbine Ranger District Fall RX Units 2024



- Bureau of Land Management
- Indian Reservation
- Other Federal
- Private
- State
- State, County, City; Areas
- US Forest Service

- Columbine RD Fall 2024 RX Units
- City Limits
- Ranger District Boundary
- Streams
- US
- State
- Other Roads

- Roads Open to All Vehicles, Yearlong
- Roads Open to All Vehicles, Seasonal
- Roads Open to Highway Legal Vehicles Only, Yearlong
- Roads Open to Highway Legal Vehicles Only, Seasonal
- Special Designation, Seasonal
- State or US Highway

