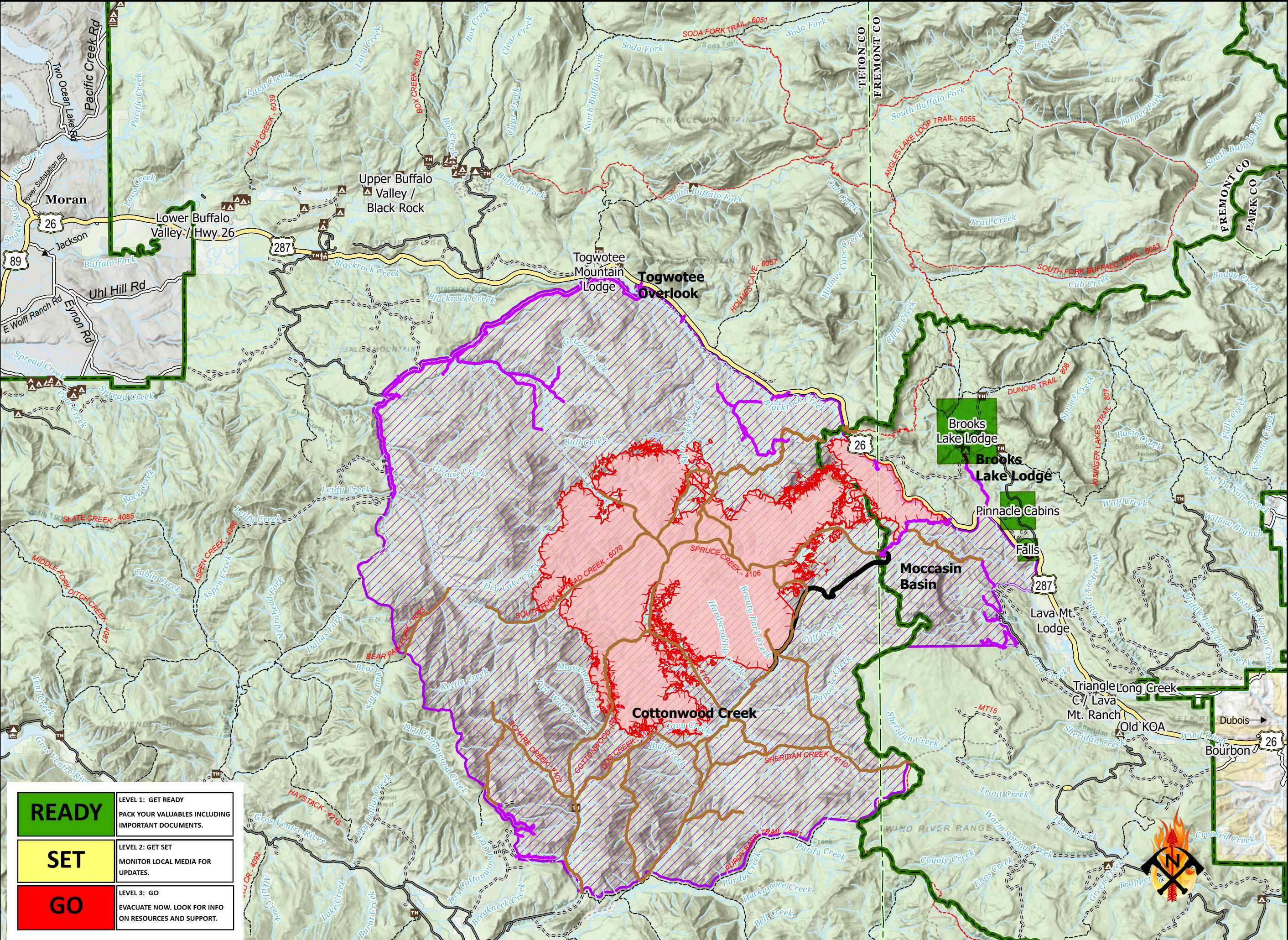
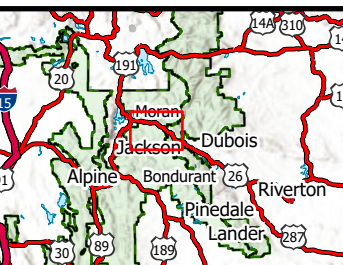


FISH CREEK
PUBLIC INFORMATION
FISH CREEK
WY-BTF-002416
9/19/2024 DAY
25,052 ACRES AT 9/16/2024 2252 HRS



- Read Set Go
- Ready
 - Set
 - Go
- Wildfire Daily Fire Perimeter
 - Confinement
 - Uncontained
 - Primary Highway
 - Road, Unspecified
 - Trail
 - Continental Divide Trail
 - BOATING SITE
 - Campground
 - Camping Area
 - Hotel, Lodge, Resort
 - Interpretive Site
 - Interpretive Visitor Center
 - PICNIC SITE
 - Trailhead
 - Bureau of Land Management (BLM)
 - National Park Service (NPS)
 - State
 - US Forest Service (USFS)
 - Private
 - County Boundary
 - Forest Boundary
 - Closed_Road
 - Closed_Trail
 - Fire Closure Order #04-03-24-313



READY	LEVEL 1: GET READY PACK YOUR VALUABLES INCLUDING IMPORTANT DOCUMENTS.
SET	LEVEL 2: GET SET MONITOR LOCAL MEDIA FOR UPDATES.
GO	LEVEL 3: GO EVACUATE NOW. LOOK FOR INFO ON RESOURCES AND SUPPORT.

