

POTTER FIRE: 3,428 acres, 76% contained. Crews are constructing primary containment line on the fire's southwest corner. They also continue to patrol and mop up interior heat, secure the fire's edge, remove unneeded equipment and complete suppression repair.

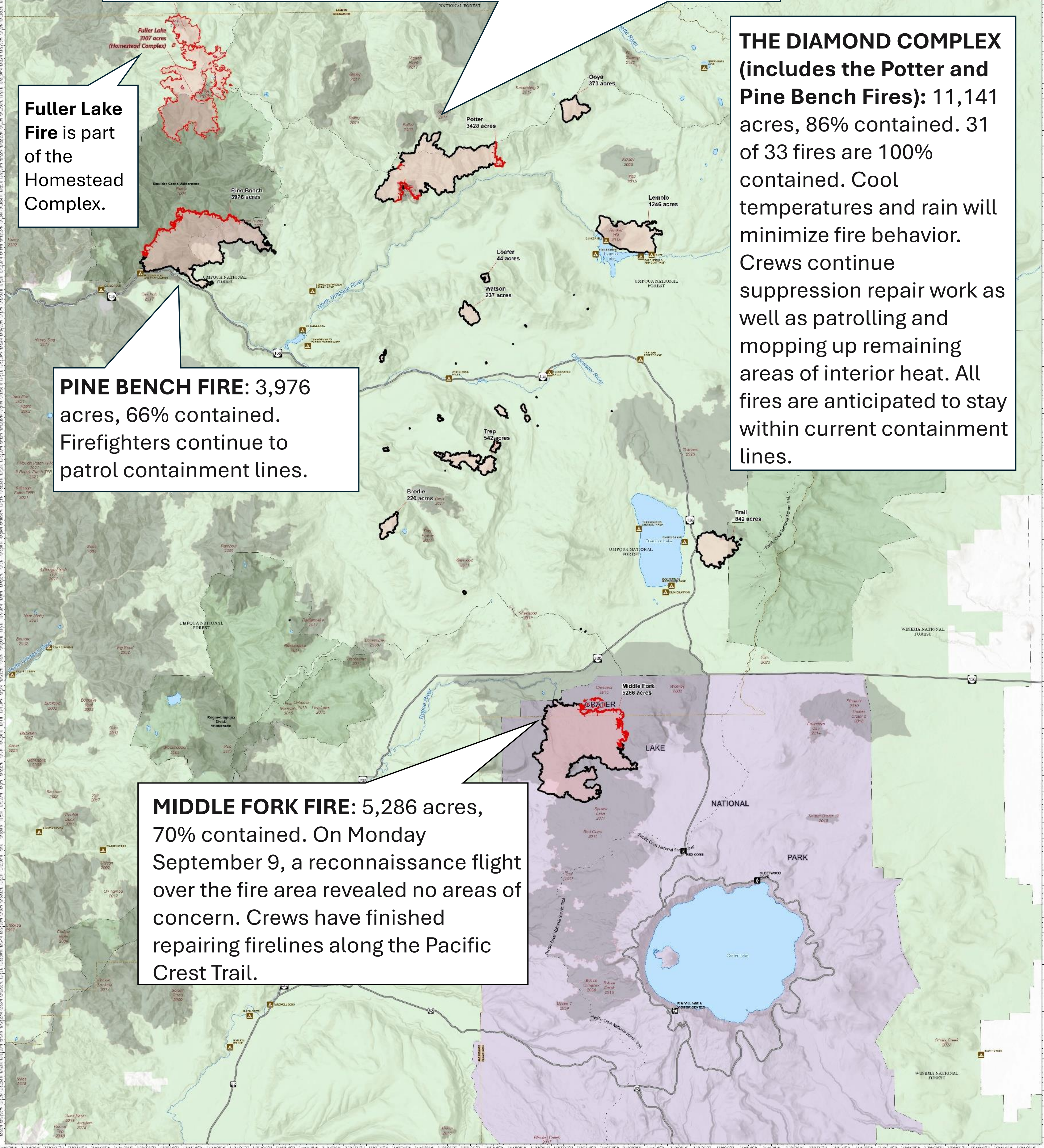


Fuller Lake Fire is part of the Homestead Complex.

THE DIAMOND COMPLEX (includes the Potter and Pine Bench Fires): 11,141 acres, 86% contained. 31 of 33 fires are 100% contained. Cool temperatures and rain will minimize fire behavior. Crews continue suppression repair work as well as patrolling and mopping up remaining areas of interior heat. All fires are anticipated to stay within current containment lines.

PINE BENCH FIRE: 3,976 acres, 66% contained. Firefighters continue to patrol containment lines.

MIDDLE FORK FIRE: 5,286 acres, 70% contained. On Monday September 9, a reconnaissance flight over the fire area revealed no areas of concern. Crews have finished repairing firelines along the Pacific Crest Trail.



Diamond Complex
OR-UPF-240303
11,141 acres

Middle Fork
OR-CLP-240223
5,286 acres

From IR and GPS 09/08/2024 @ 2040 PDT



- Pacific Crest National Scenic Trail
- Visitor Center
- Trailhead
- Campground
- Contained Fire Line
- Uncontained Fire Line
- Secondary Hwy
- State Highway

- Fire Perimeter
- National Park Service (NPS)
- US Forest Service (USFS)
- USFS Wilderness

