

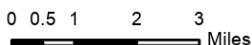
Sunrise Peak  
5,814



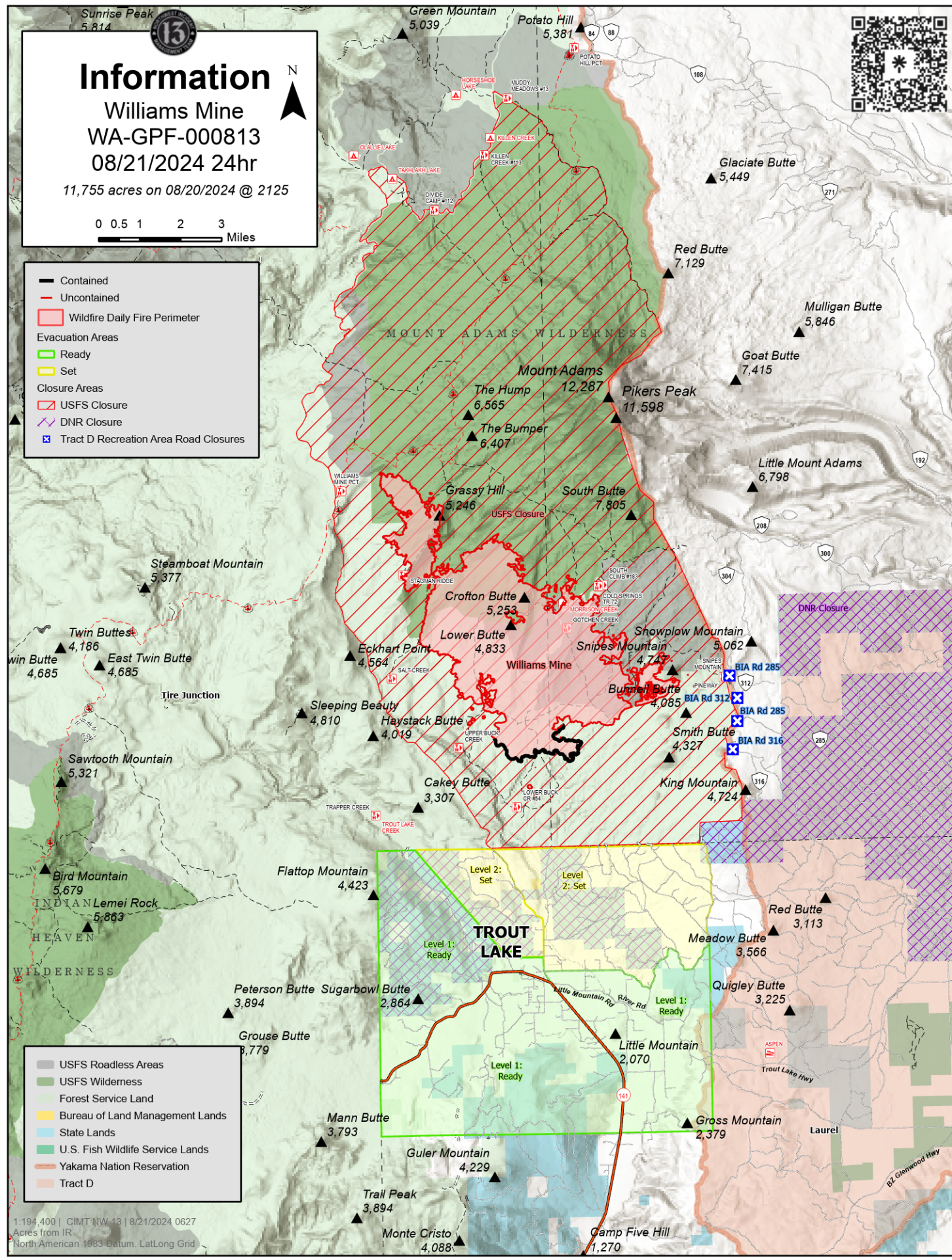
# Information

Williams Mine  
WA-GPF-000813  
08/21/2024 24hr

11,755 acres on 08/20/2024 @ 2125



- Contained
- - - Uncontained
- ▭ Wildfire Daily Fire Perimeter
- Evacuation Areas
- ▭ Ready
- ▭ Set
- Closure Areas
- ▭ USFS Closure
- ▭ DNR Closure
- ▭ Tract D Recreation Area Road Closures



- ▭ USFS Roadless Areas
- ▭ USFS Wilderness
- ▭ Forest Service Land
- ▭ Bureau of Land Management Lands
- ▭ State Lands
- ▭ U.S. Fish Wildlife Service Lands
- ▭ Yakama Nation Reservation
- ▭ Tract D