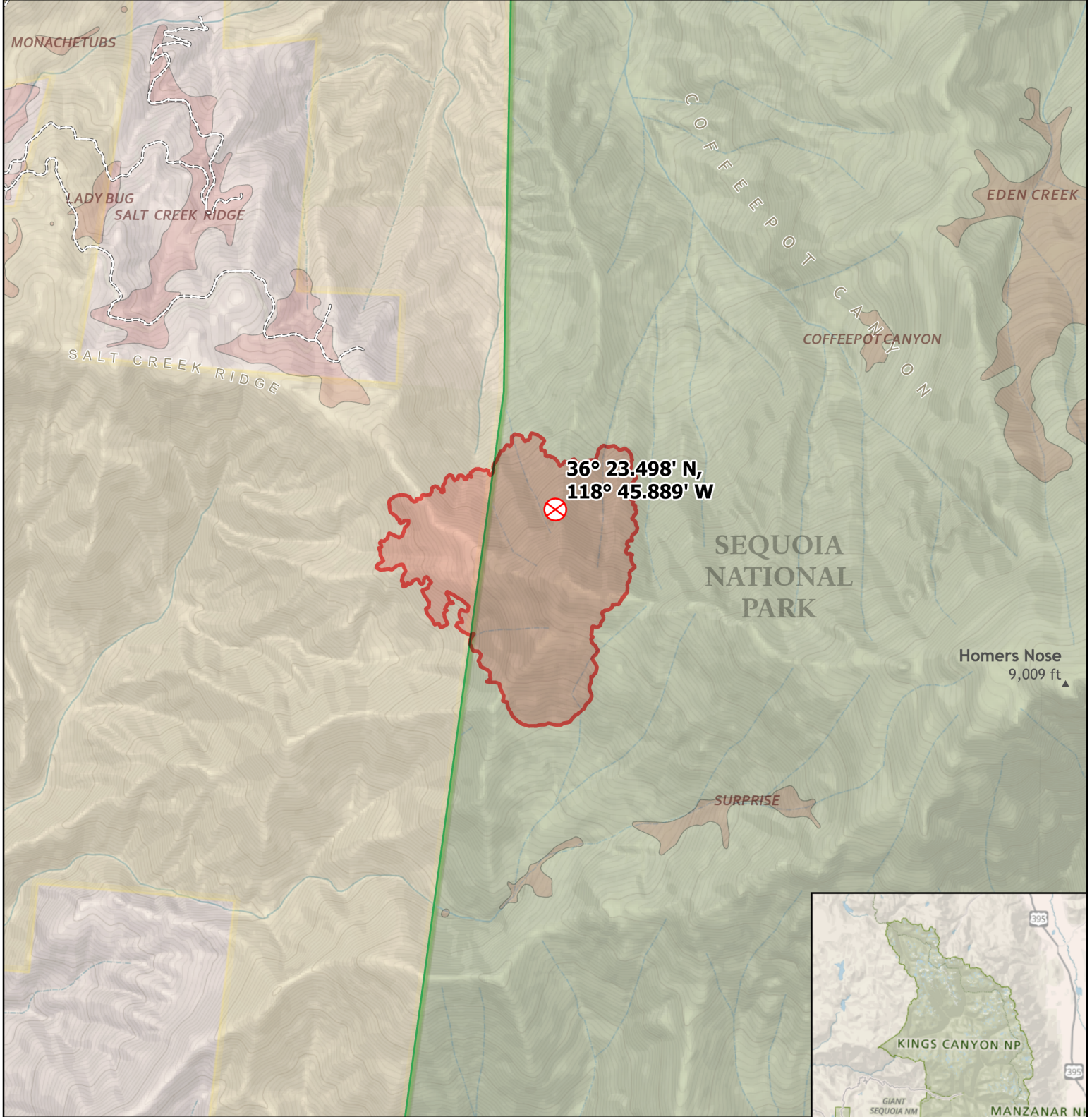


Public Information

Coffeepot Fire

Sequoia and Kings Canyon National Parks
National Park Service
U.S. Department of the Interior



This map shows the Coffeepot Fire and related features in Sequoia and Kings Canyon National Parks.



SCALE: 1:24,000 1 inch equals 2,000 ft or 0.38 mi
1 cm equals 240 m or 0.24 km
COORDINATE SYSTEM: NAD 1983 2011 UTM Zone 11N
PRODUCED BY: NPS, SEKI GIS (JF), 8/16/2024

- Fire Origin
- Wildfire Daily Fire Perimeter
- Sequoia Groves
- 4WD Roads
- Park Boundaries
- Bureau of Land Management (BLM) Boundaries

Fire Summary
228 acres
as of 8/16/2024 1100 hrs



For more information, scan the QR code to visit InciWeb

