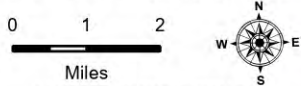


Public Information

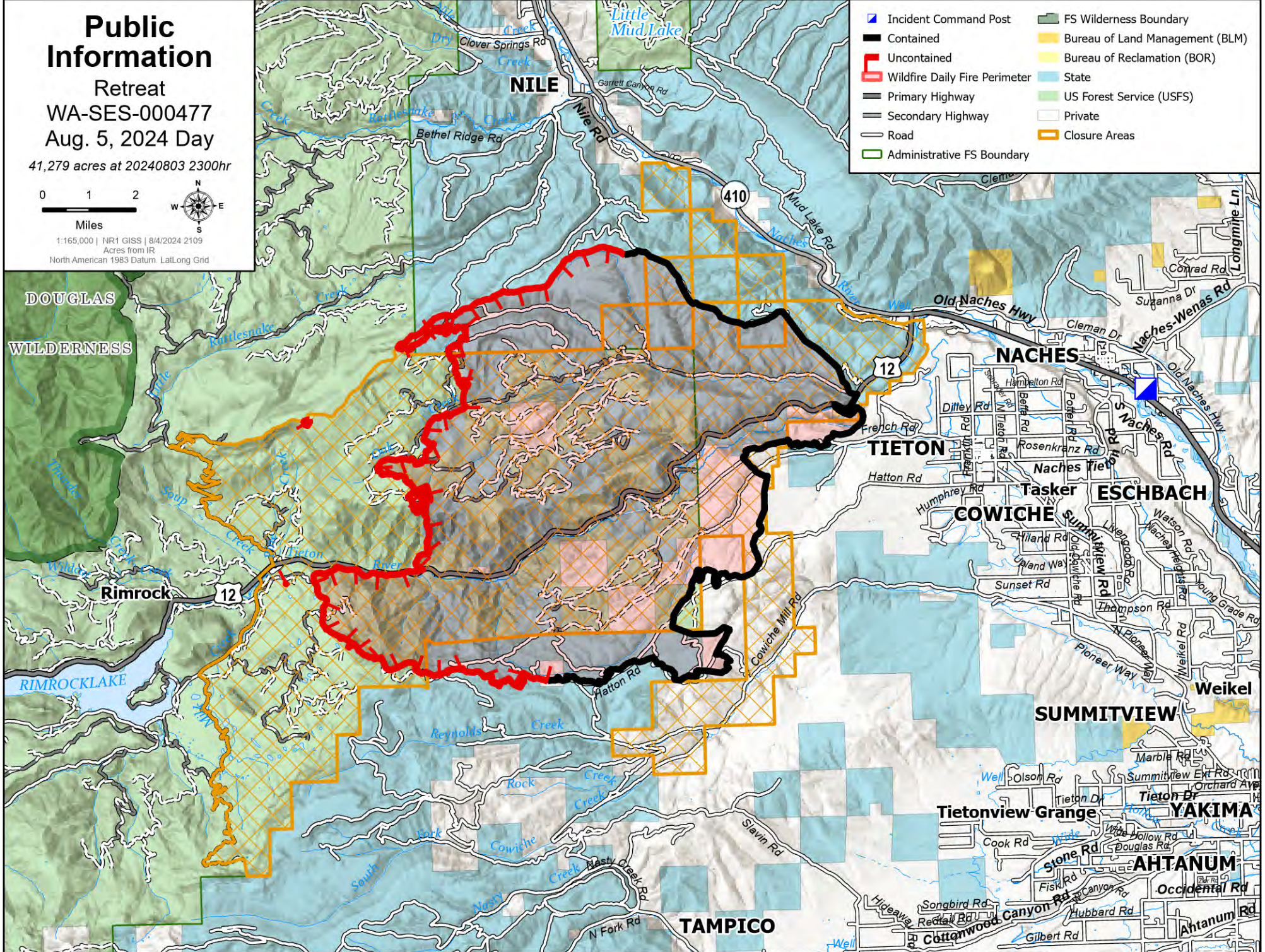
Retreat
WA-SES-000477
Aug. 5, 2024 Day

41,279 acres at 20240803 2300hr



1:165,000 | NR1 GISS | 8/4/2024 2109
Acres from IR
North American 1983 Datum Lat/Long Grid

DOUGLAS
WILDERNESS



- Incident Command Post
- Contained
- Uncontained
- Wildfire Daily Fire Perimeter
- Primary Highway
- Secondary Highway
- Road
- Administrative FS Boundary
- FS Wilderness Boundary
- Bureau of Land Management (BLM)
- Bureau of Reclamation (BOR)
- State
- US Forest Service (USFS)
- Private
- Closure Areas

Rimrock

NILE

TAMPICO

NACHES

TIETON

COWICHE

SUMMITVIEW

Tietonview Grange

AHTANUM

YAKIMA

Weikel

ESCHBACH

Tasker

NACHES

NACHES

NACHES

NACHES

NACHES

NACHES

NACHES

NACHES

NACHES

NACHES

NACHES

NACHES

NACHES

NACHES

NACHES

NACHES

NACHES

NACHES

NACHES

NACHES

NACHES

NACHES

NACHES

NACHES

NACHES

NACHES

NACHES

NACHES

NACHES

NACHES

NACHES

NACHES

NACHES

NACHES

NACHES

NACHES

NACHES

NACHES

NACHES

NACHES

NACHES

NACHES

NACHES

NACHES

NACHES

NACHES

NACHES

NACHES

NACHES

NACHES

NACHES

NACHES

NACHES

NACHES

NACHES

NACHES

NACHES

NACHES