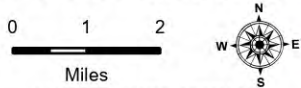


# Public Information

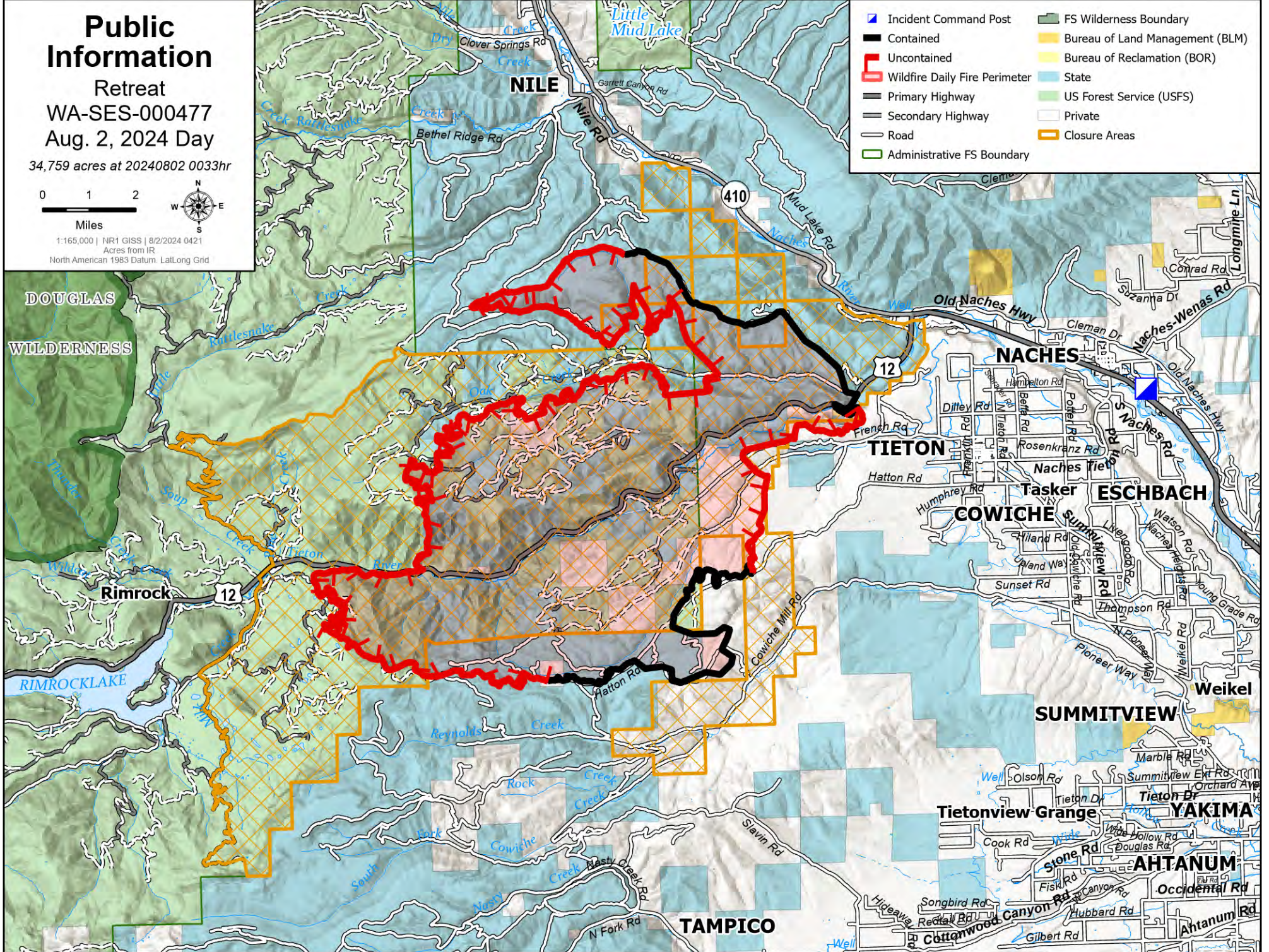
Retreat  
WA-SES-000477  
Aug. 2, 2024 Day

34,759 acres at 20240802 0033hr



1:165,000 | NR1 GISS | 8/2/2024 0421  
Acres from IR  
North American 1983 Datum, Lat/Long Grid

DOUGLAS  
WILDERNESS



- Incident Command Post
- Contained
- Uncontained
- Wildfire Daily Fire Perimeter
- Primary Highway
- Secondary Highway
- Road
- Administrative FS Boundary
- FS Wilderness Boundary
- Bureau of Land Management (BLM)
- Bureau of Reclamation (BOR)
- State
- US Forest Service (USFS)
- Private
- Closure Areas

Rimrock

12

RIMROCK LAKE

NILE

410

TIETON

NACHES

Naches Tieton

Tasker

ESCHBACH

COWICHE

SUMMITVIEW

Weikel

Tietonview Grange

YAKIMA

AHTANUM

TAMPICO