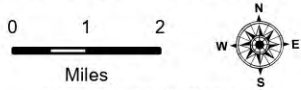


# Public Information

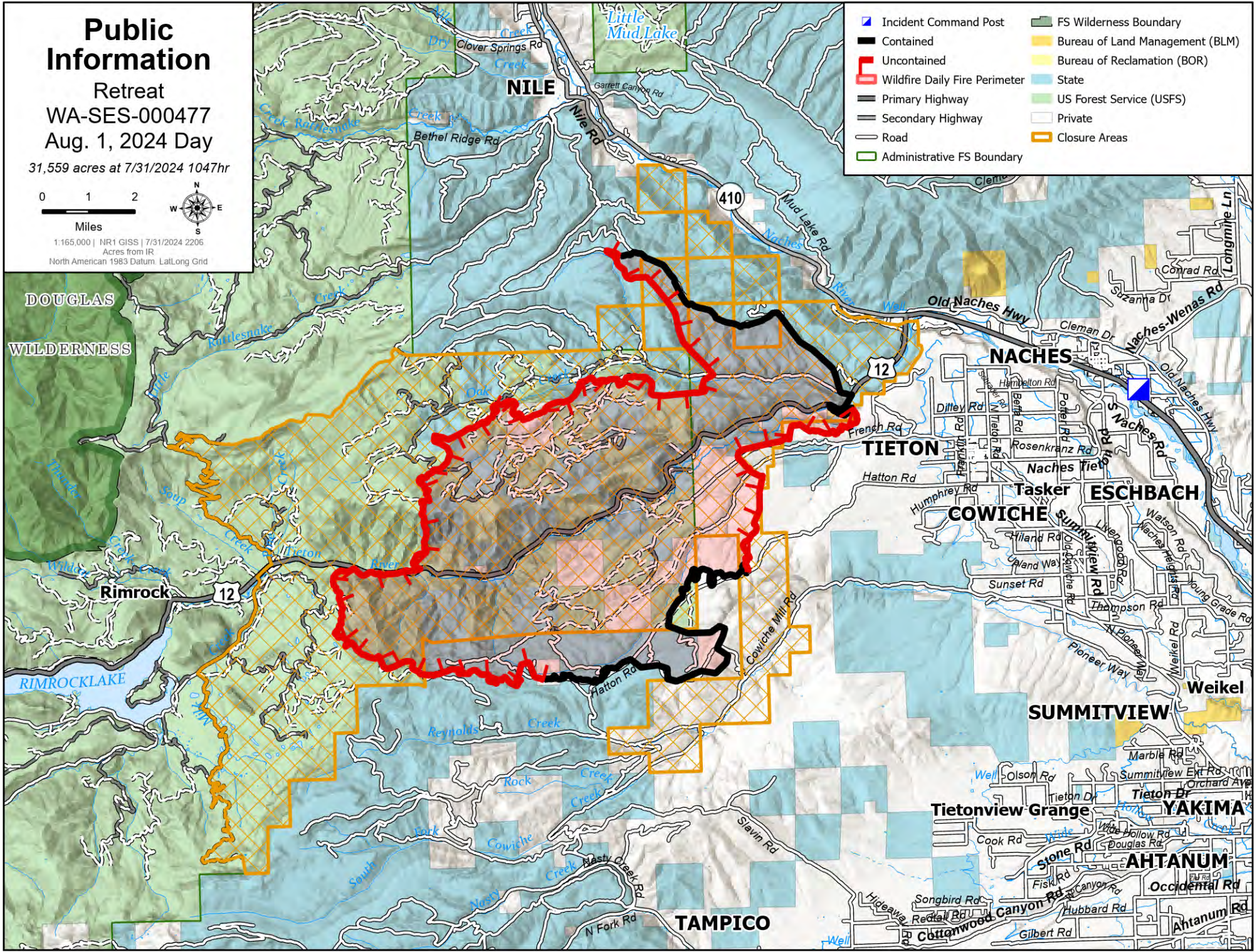
Retreat  
WA-SES-000477  
Aug. 1, 2024 Day

31,559 acres at 7/31/2024 1047hr



1:165,000 | NR1 GISS | 7/31/2024 2206  
Acres from IR  
North American 1983 Datum Lat/Long Grid

DOUGLAS  
WILDERNESS



- Incident Command Post
- Contained
- Uncontained
- Wildfire Daily Fire Perimeter
- Primary Highway
- Secondary Highway
- Road
- Administrative FS Boundary
- FS Wilderness Boundary
- Bureau of Land Management (BLM)
- Bureau of Reclamation (BOR)
- State
- US Forest Service (USFS)
- Private
- Closure Areas