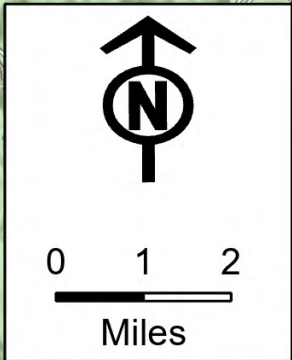
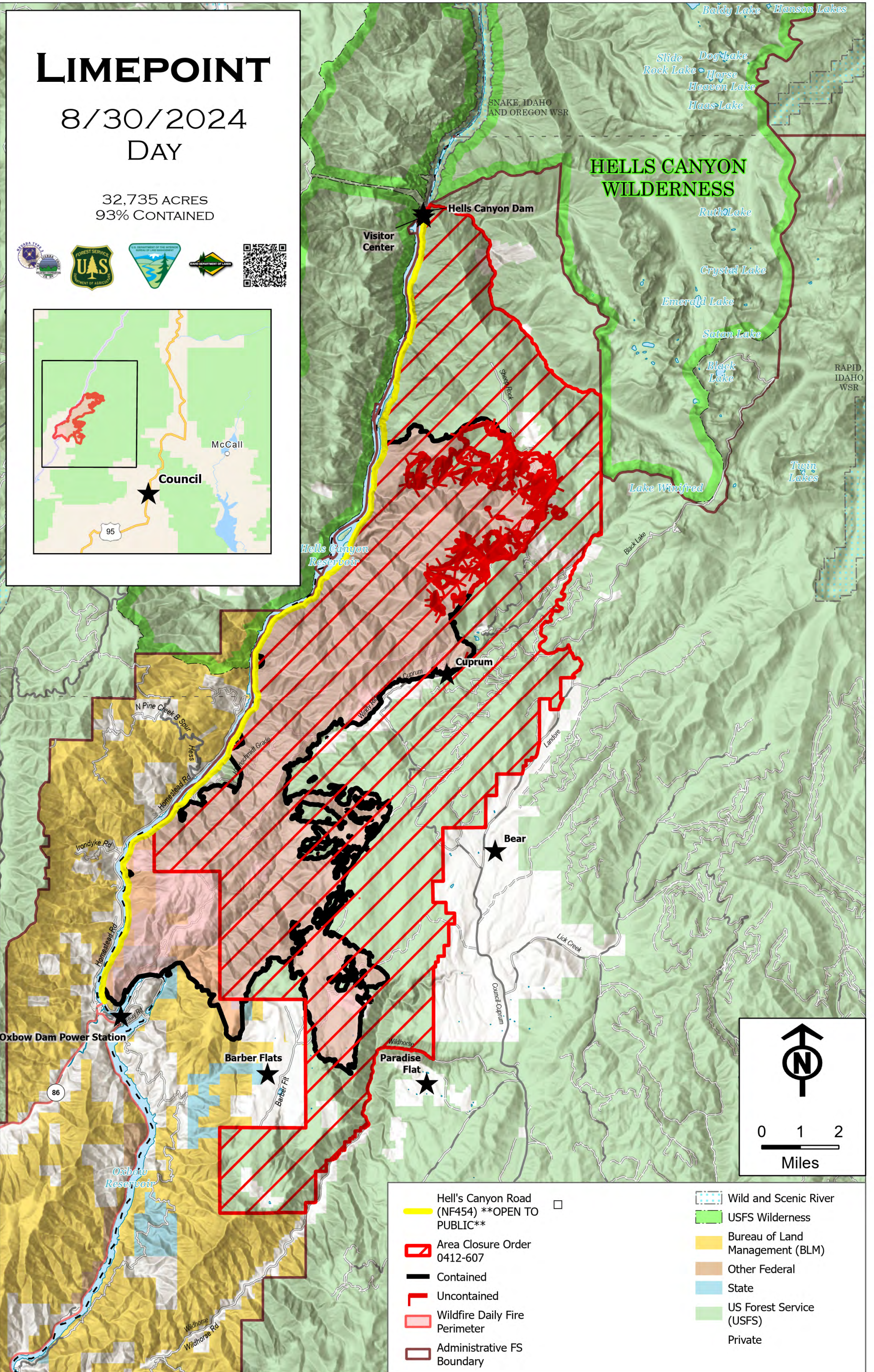
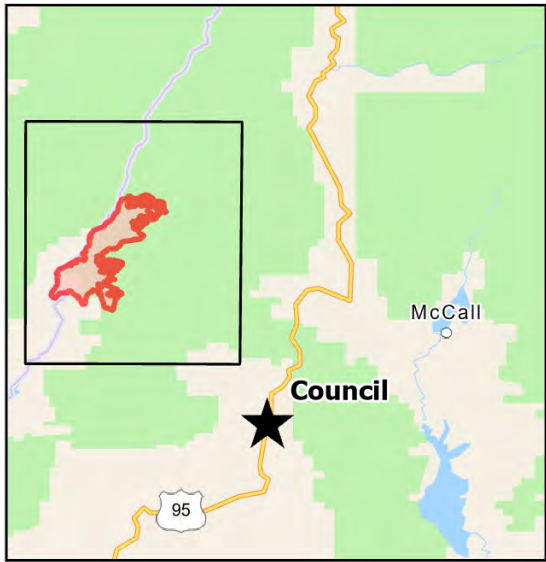


LIMEPOINT

8/30/2024
DAY

32,735 ACRES
93% CONTAINED



- Hell's Canyon Road (NF454) **OPEN TO PUBLIC**
- Area Closure Order 0412-607
- Contained
- Uncontained
- Wildfire Daily Fire Perimeter
- Administrative FS Boundary
- Wild and Scenic River
- USFS Wilderness
- Bureau of Land Management (BLM)
- Other Federal
- State
- US Forest Service (USFS)
- Private