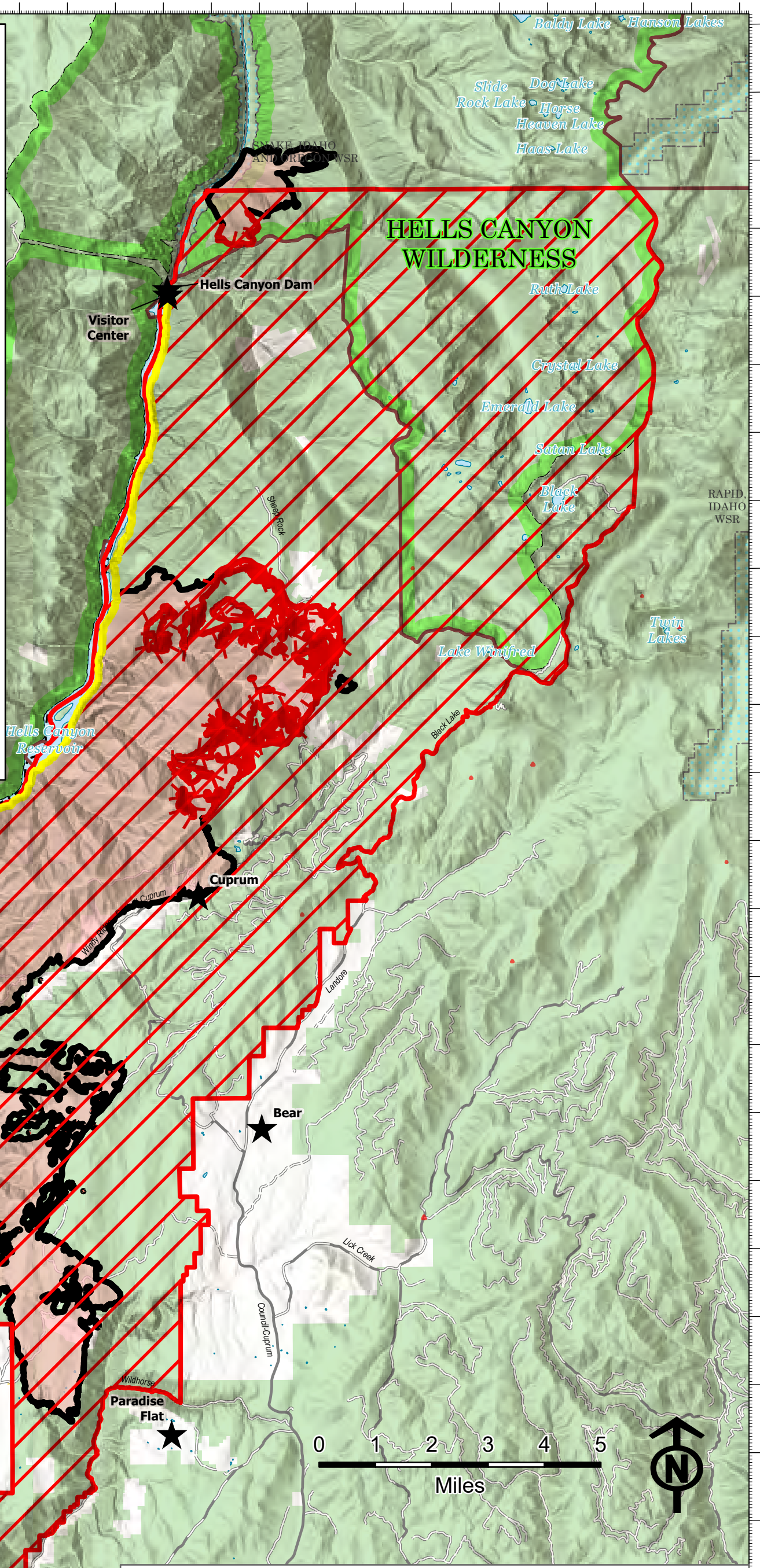
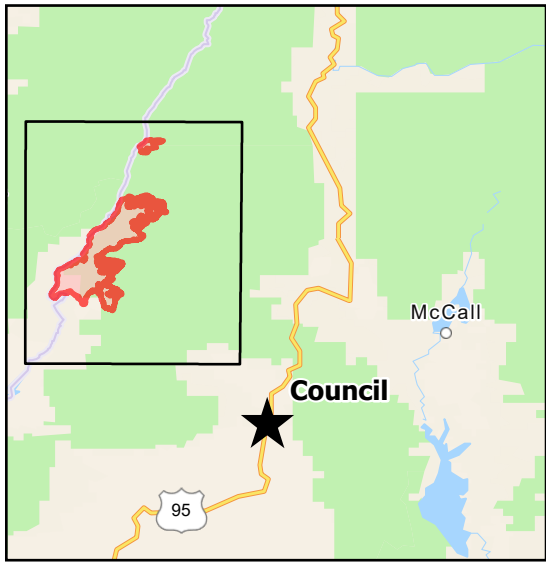


116°53.7'W 116°51.6'W 116°49.5'W 116°47.4'W 116°45.3'W 116°43.2'W 116°41.1'W 116°39'W 116°36.9'W 116°34.8'W 116°32.7'W 116°30.6'W

# LIMEPOINT

## & CLIFF MTN. 8/24/2024

DAY  
32,600 ACRES  
84% CONTAINED



### HELLS CANYON WILDERNESS

Hells Canyon Dam

Visitor Center

Cuprum

Bear

Barber Flats

Paradise Flat



Hell's Canyon Road (NF454)	<b>**OPEN TO PUBLIC**</b>	Wild and Scenic River
Area Closure Order 0412-603		USFS Wilderness
Contained		Bureau of Land Management (BLM)
Uncontained		Other Federal
Wildfire Daily Fire Perimeter		State
Administrative FS Boundary		US Forest Service (USFS)
		Private

116°53.7'W 116°51.6'W 116°49.5'W 116°47.4'W 116°45.3'W 116°43.2'W 116°41.1'W 116°39'W 116°36.9'W 116°34.8'W 116°32.7'W 116°30.6'W

44°51.3'N 44°52.35'N 44°53.4'N 44°54.45'N 44°55.5'N 44°56.55'N 44°57.6'N 44°58.65'N 44°59.7'N 45°0.75'N 45°1.8'N 45°2.85'N 45°3.9'N 45°4.95'N 45°6'N 45°7.05'N 45°8.1'N 45°9.15'N 45°10.2'N 45°11.25'N 45°12.3'N 45°13.35'N 45°14.4'N 45°15.45'N 45°16.5'N 45°17.55'N 45°18.6'N

44°51.3'N 44°52.35'N 44°53.4'N 44°54.45'N 44°55.5'N 44°56.55'N 44°57.6'N 44°58.65'N 44°59.7'N 45°0.75'N 45°1.8'N 45°2.85'N 45°3.9'N 45°4.95'N 45°6'N 45°7.05'N 45°8.1'N 45°9.15'N 45°10.2'N 45°11.25'N 45°12.3'N 45°13.35'N 45°14.4'N 45°15.45'N 45°16.5'N 45°17.55'N 45°18.6'N