

Public Information

Sandstone

08/28/2024 Day

Sandstone 702 acres

Blister Creek 18 acres

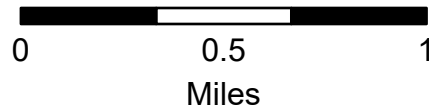
at 20240827 @ 2359 PDT Hrs



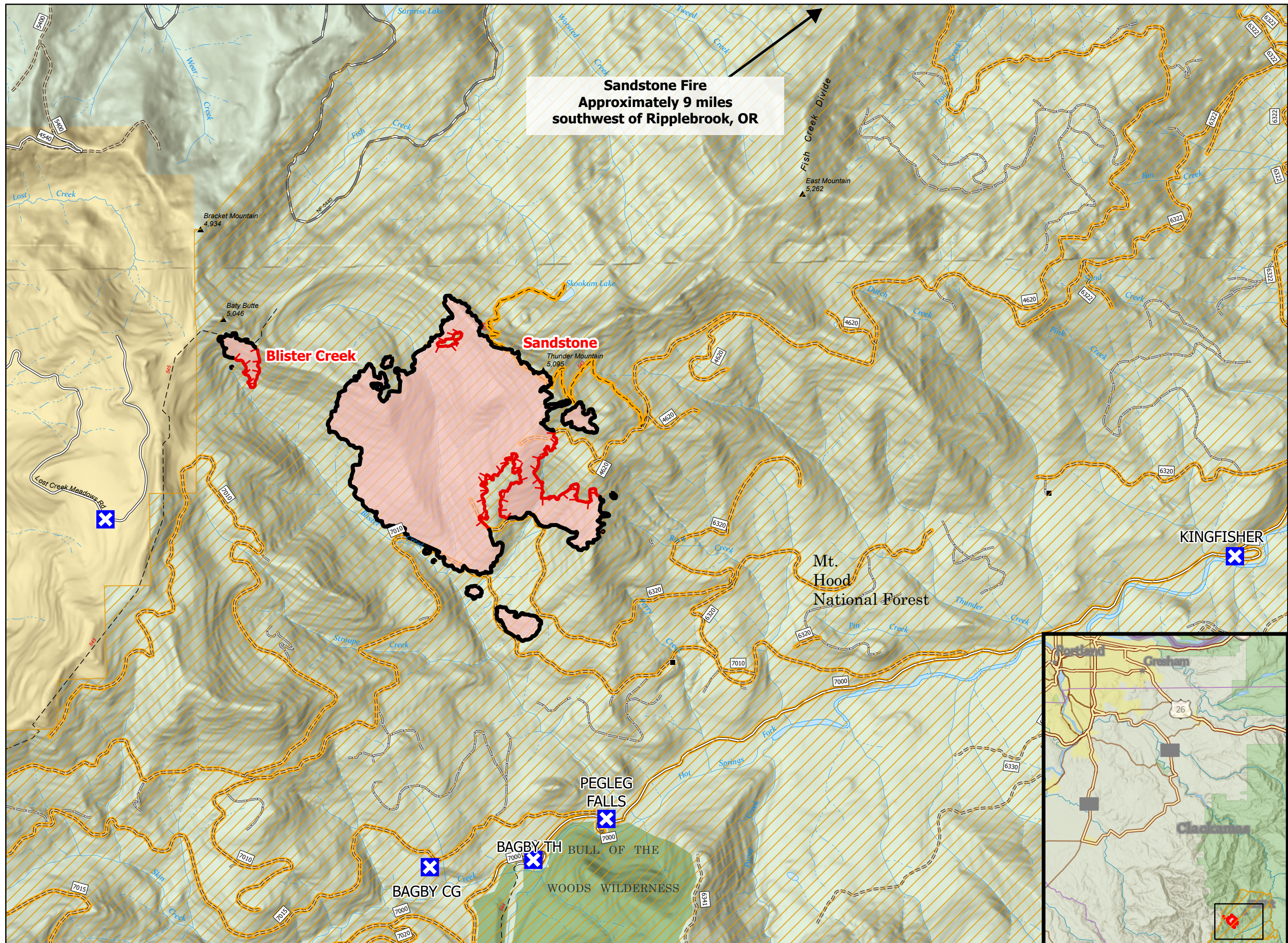
- Road/Trail Closure
- FS Closed Road
- Sandstone Closure Area
- Closure
- Road, Paved
- Road, Dirt/Gravel
- Road, high clearance
- Trail
- USFS Wilderness
- Forest Service Land
- Bureau of Land Management Lands
- Perimeter Line**
 - Contained
 - Uncontained
 - Wildfire Daily Fire
 - Perimeter



More Information:
<http://incweb.nwcg.gov>



1:30,000 | NW IMT 10 | 8/27/2024 1911
Acres from IR
North American 1983 Datum, Lat/Long Grid



Sandstone Fire
Approximately 9 miles
southwest of Ripplebrook, OR

KINGFISHER

Mt. Hood
National Forest

PEGLEG
FALLS

BAGBY TH

BAGBY CG

BULL OF THE

WOODS WILDERNESS