

# Public Information

## Sandstone

08/26/2024 Day

Sandstone 702 acres

Blister Creek 18 acres

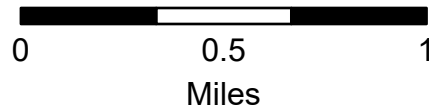
at 20240825 @ 2247 PDT Hrs



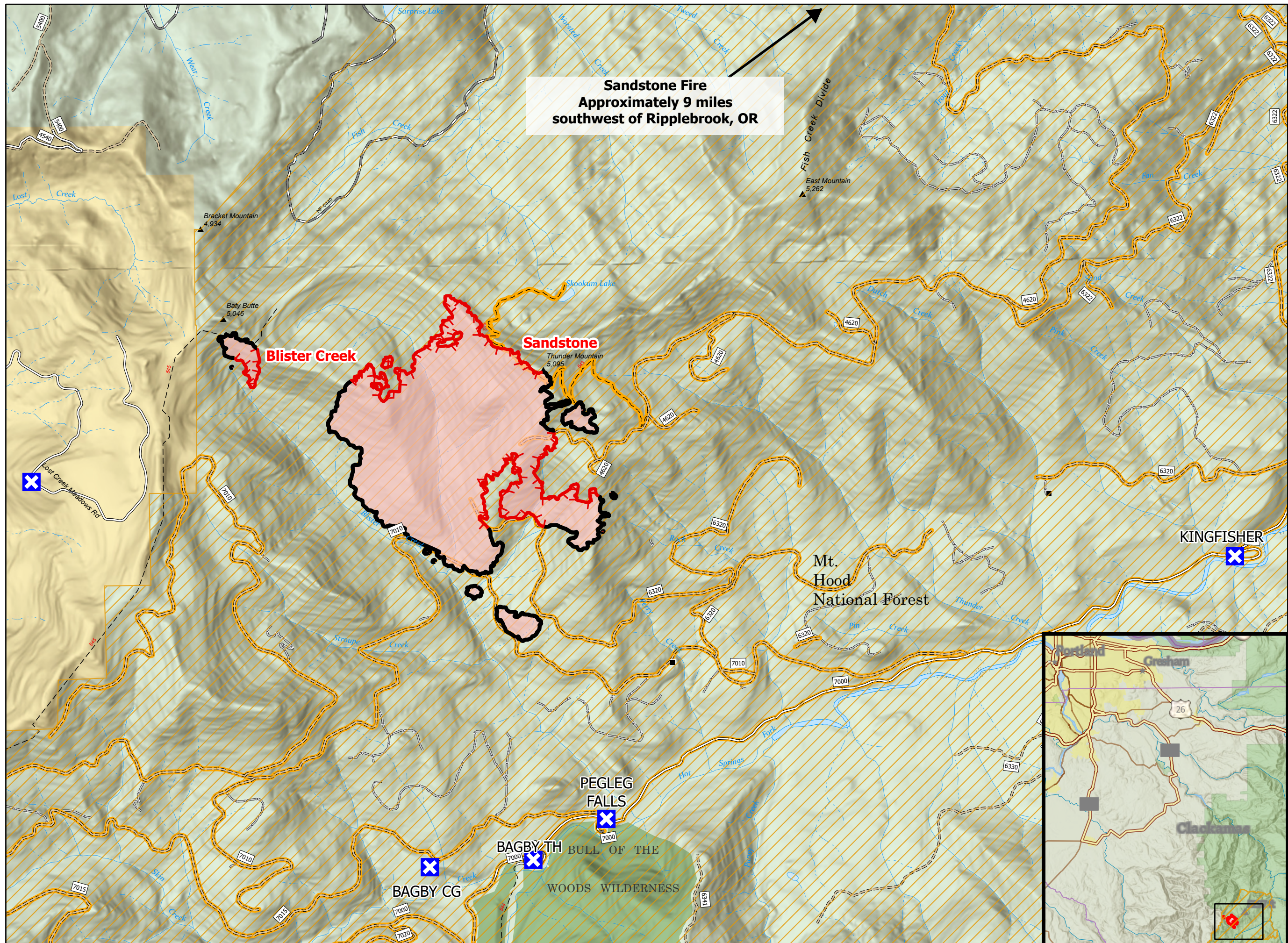
- Road/Trail Closure
- FS Closed Road
- Sandstone Closure Area
- Closure
- Road, Paved
- Road, Dirt/Gravel
- Road, high clearance
- Trail
- USFS Wilderness
- Forest Service Land
- Bureau of Land Management Lands
- Perimeter Line**
- Contained
- Uncontained
- Wildfire Daily Fire
- Perimeter



More Information:  
<http://incweb.nwcg.gov>



1:30,000 | NW IMT 10 | 8/26/2024 0507  
Acres from IR Acres from IR  
North American 1983 Datum, Lat/Long Grid



**Sandstone Fire**  
Approximately 9 miles  
southwest of Ripplebrook, OR

**Blister Creek**

**Sandstone**

Mt. Hood  
National Forest

KINGFISHER

PEGLEG  
FALLS

BAGBY TH

BAGBY CG

BULL OF THE

WOODS WILDERNESS