

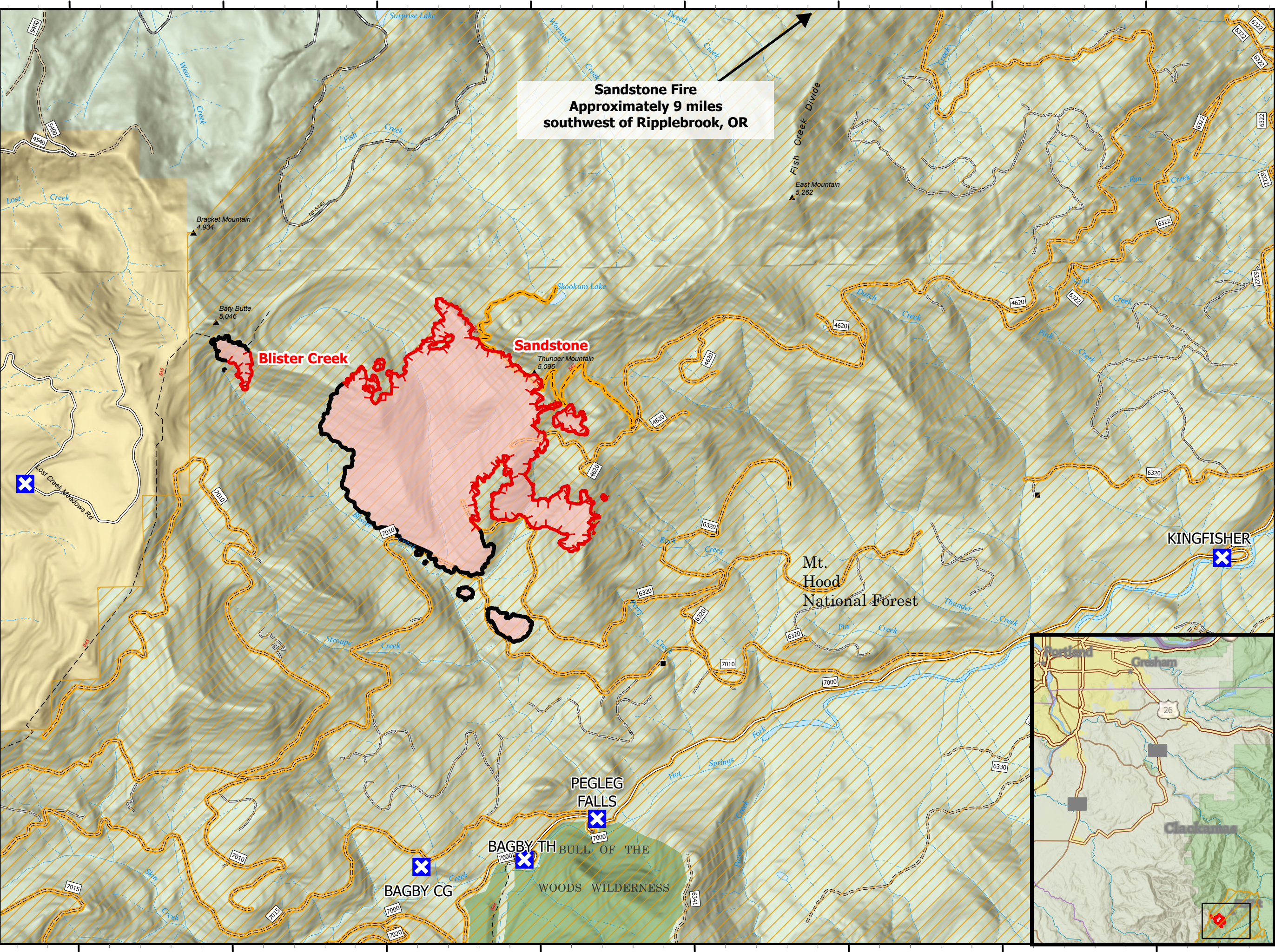
Public Information

Sandstone
08/23/2024 Day
Sandstone 702 acres
Blister Creek 18 acres
at 20240819 @ 2000 PDT Hrs

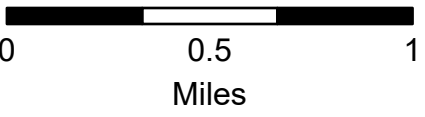


- Road/Trail Closure
- FS Closed Road
- Sandstone Closure Area
- Closure
- Road, Paved
- Road, Dirt/Gravel
- Road, high clearance
- Trail
- USFS Wilderness
- Forest Service Land
- Bureau of Land Management Lands
- Perimeter Line**
- Contained
- Uncontained
- Wildfire Daily Fire
- Perimeter

Sandstone Fire
Approximately 9 miles
southwest of Ripplebrook, OR



More Information:
<http://incweb.nwcg.gov>



1:30,000 | NW IMT 10 | 8/22/2024 2117
Acres from IR Acres from IR
North American 1983 Datum. Lat/Long Grid