

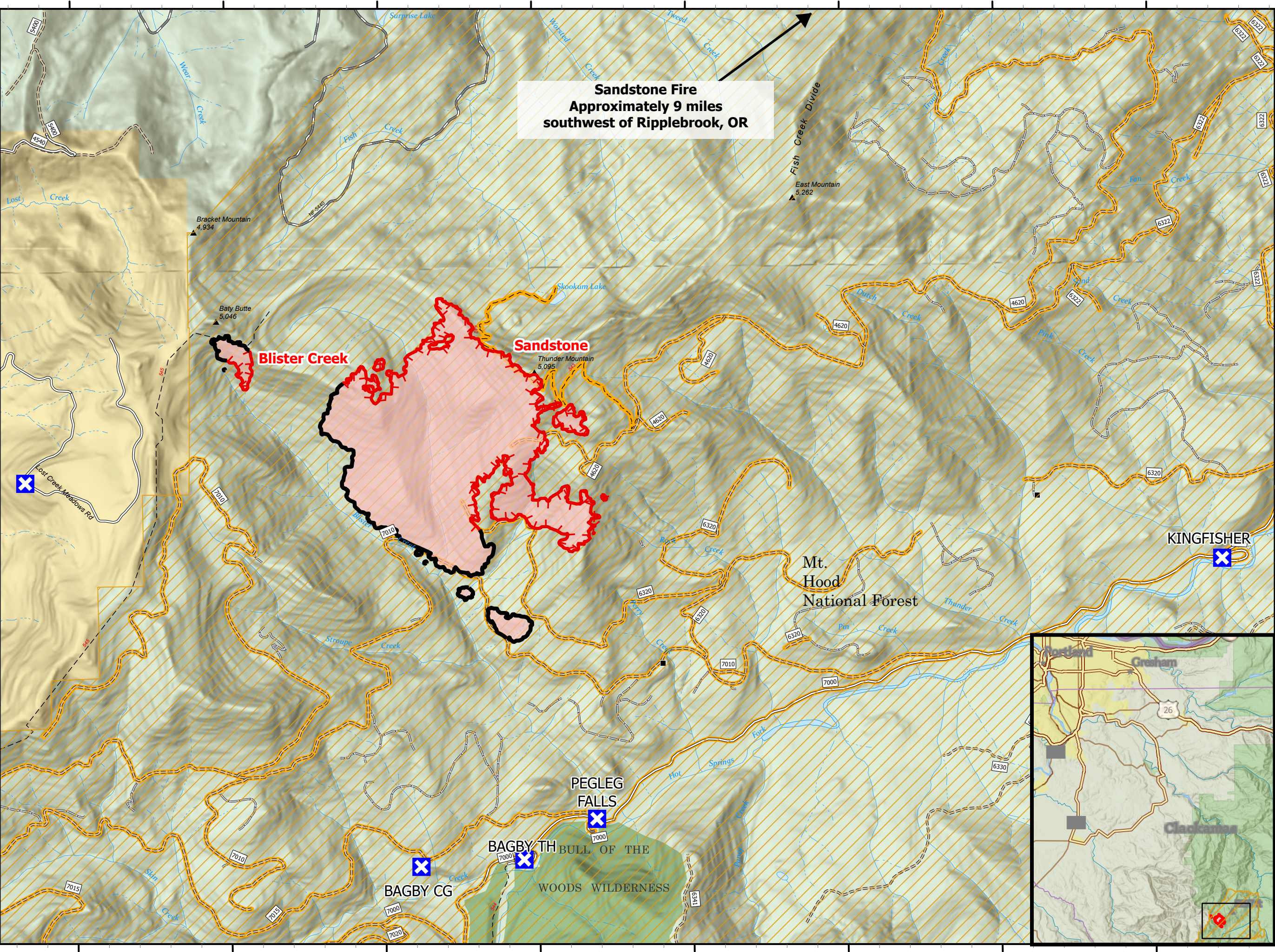
# Public Information

**Sandstone**  
08/22/2024 Day  
Sandstone 702 acres  
Blister Creek 18 acres  
at 20240819 @ 2000 PDT Hrs

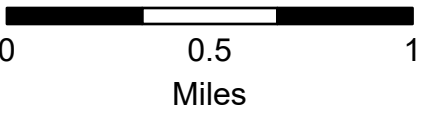


- Road/Trail Closure
- FS Closed Road
- Sandstone Closure Area
- Closure
- Road, Paved
- Road, Dirt/Gravel
- Road, high clearance
- Trail
- USFS Wilderness
- Forest Service Land
- Bureau of Land Management Lands
- Perimeter Line**
  - Contained
  - Uncontained
  - Wildfire Daily Fire
  - Perimeter

**Sandstone Fire**  
Approximately 9 miles  
southwest of Ripplebrook, OR



More Information:  
<http://incweb.nwcg.gov>



1:30,000 | NW IMT 10 | 8/22/2024 0507  
Acres from IR Acres from IR  
North American 1983 Datum. Lat/Long Grid

