

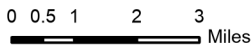
Sunrise Peak  
5,814



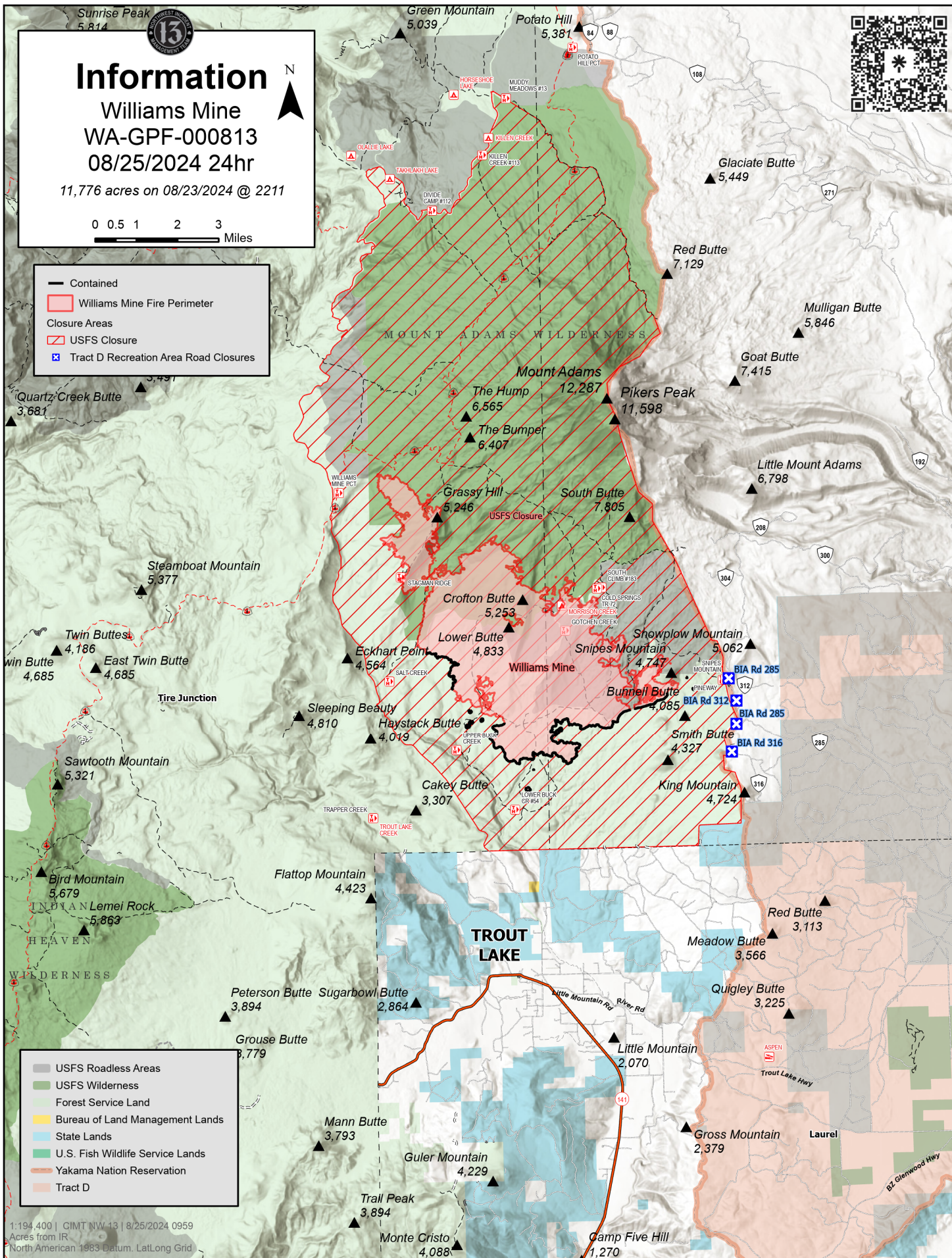
# Information

Williams Mine  
WA-GPF-000813  
08/25/2024 24hr

11,776 acres on 08/23/2024 @ 2211



- Contained
- Williams Mine Fire Perimeter
- Closure Areas
- USFS Closure
- Tract D Recreation Area Road Closures



- USFS Roadless Areas
- USFS Wilderness
- Forest Service Land
- Bureau of Land Management Lands
- State Lands
- U.S. Fish Wildlife Service Lands
- Yakama Nation Reservation
- Tract D

1:194,400 | GIMT NW 13 | 8/25/2024 0959  
Acres from IR  
North American 1983 Datum, Lat/Long Grid